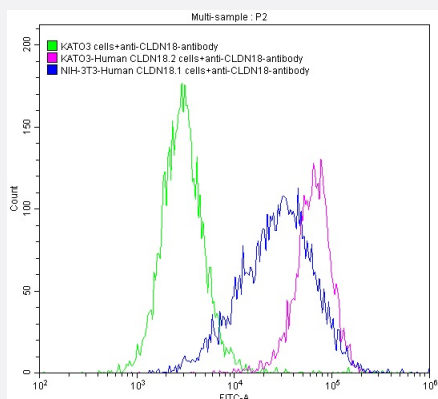


RecomAb™

CLDN18 recombinant monoclonal antibody, clone 25E3

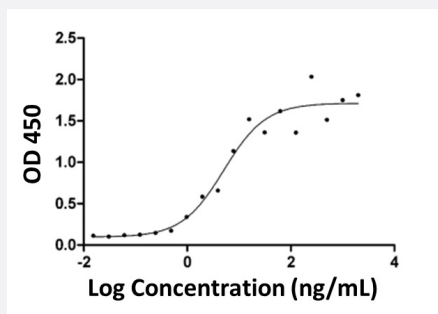
Catalog # RAB07550 Size 100 uL

Applications



Flow Cytometry

Flow cytometry analysis of untransfected KATO3 cells (green line), transfected human CLDN18.2 KATO3 stable cells (red line) and transfected human CLDN18.1 NIH-3T3 stable cells (blue line) were stained with CLDN18 recombinant monoclonal antibody, clone 25E3 (Cat # RAB07550) (2ug/1*10⁶cells). The cells were washed and then followed by FITC-conjugated Goat Anti-Human IgG, Fc-gamma antibody (CSB-PA271513).



The ELISA results show that the binding activity of human CLDN18.2 with CLDN18 recombinant monoclonal antibody, clone 25E3 (Cat # RAB07550). Immobilized Human CLDN18.2 (CSB-MP005498HU(A5)) at 5 ug/mL can bind CLDN18 recombinant monoclonal antibody, clone 25E3 (Cat # RAB07550), the EC₅₀ is 2.947-8.782 ng/mL.

Specification

Product Description	Human recombinant monoclonal antibody raised against human CLDN18.
Antibody Species	Human
Immunogen	Original antibody is raised against recombinant protein of human CLDN18.
Reactivity	Human
Form	Liquid

Purification	Affinity chromatography purification
Isotype	IgG1
Quality Control Testing	Binding activity The ELISA results show that the binding activity of human CLDN18.2 with CLDN18 recombinant monoclonal antibody, clone 25E3 (Cat # RAB07550). Immobilized Human CLDN18.2 (CSB-MP005498 HU(A5)) at 5 ug/mL can bind CLDN18 recombinant monoclonal antibody, clone 25E3 (Cat # RAB07550), the EC ₅₀ is 2.947-8.782 ng/mL.
Recommend Usage	ELISA Flow Cytometry(1:20-1:200) The optimal working dilution should be determined by the end user.
Storage Buffer	In PBS, pH7.4 (0.03% Proclin 300 and 50% glycerol)
Storage Instruction	Store at -20°C or -80°C. Aliquot to avoid repeated freezing and thawing.

Applications

- Enzyme-linked Immunoabsorbent Assay
- Flow Cytometry

Flow cytometry analysis of untransfected KATO3 cells (green line), transfected human CLDN18.2 KATO3 stable cells (red line) and transfected human CLDN18.1 NIH-3T3 stable cells (blue line) were stained with CLDN18 recombinant monoclonal antibody, clone 25E3 (Cat # RAB07550)(2ug/1*10⁶cells). The cells were washed and then followed by FITC-conjugated Goat Anti-Human IgG, Fc-gamma antibody (CSB-PA271513).

Gene Info — CLDN18

Entrez GeneID	51208
Protein Accession#	P56856
Gene Name	CLDN18
Gene Alias	SFTA5, SFTPJ
Gene Description	claudin 18
Omim ID	609210
Gene Ontology	Hyperlink

Gene Summary

CLDN18 belongs to the large claudin family of proteins, which form tight junction strands in epithelial cells (Niimi et al., 2001 [PubMed 11585919]).[supplied by OMIM]

Other Designations

surfactant associated 5|surfactant associated protein J|surfactant, pulmonary associated protein J

Pathway

- [Cell adhesion molecules \(CAMs\)](#)
- [Leukocyte transendothelial migration](#)
- [Tight junction](#)