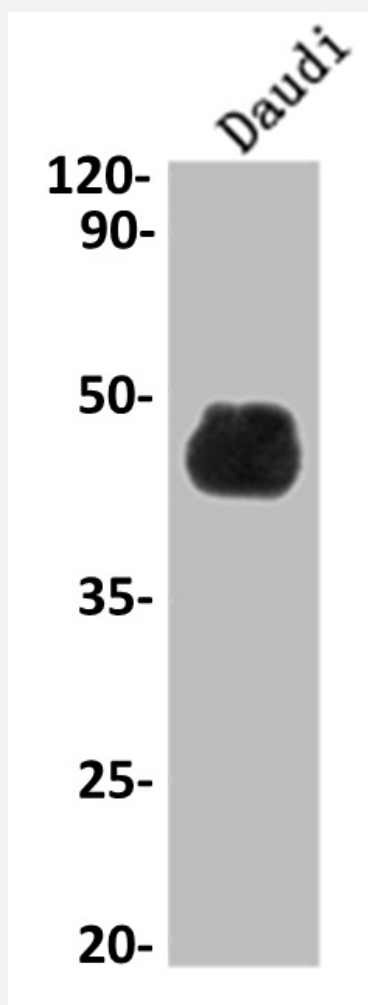


RecomAb™

CD48 recombinant monoclonal antibody, clone 7E1

Catalog # RAB07546 Size 100 uL

Applications



Western Blot (Cell lysate)

Western blot analysis of Daudi whole cell lysate with CD48 recombinant monoclonal antibody, clone 7E1 (Cat # RAB07546).

Specification

Product Description	Rabbit recombinant monoclonal antibody raised against human CD48.
Antibody Species	Rabbit

Immunogen	Original antibody is raised against a synthetic peptide corresponding to human CD48.
Theoretical MW (kDa)	Calculated MW: 28, 2
Reactivity	Human
Form	Liquid
Purification	Affinity chromatography purification
Isotype	IgG
Recommend Usage	ELISA Western Blot (1:500-1:5000) The optimal working dilution should be determined by the end user.
Storage Buffer	In PBS, pH7.4 (150 mM NaCl, 0.02% sodium azide and 50% glycerol)
Storage Instruction	Store at -20°C or -80°C. Aliquot to avoid repeated freezing and thawing.
Note	This product contains sodium azide: a POISONOUS AND HAZARDOUS SUBSTANCE which should be handled by trained staff only.

Applications

- Western Blot (Cell lysate)

Western blot analysis of Daudi whole cell lysate with CD48 recombinant monoclonal antibody, clone 7E1 (Cat # RAB07546).

- Enzyme-linked Immunoabsorbent Assay

Gene Info — CD48

Entrez GeneID	962
Protein Accession#	P09326
Gene Name	CD48
Gene Alias	BCM1, BLAST, BLAST1, MEM-102, SLAMF2, hCD48, mCD48
Gene Description	CD48 molecule
Omim ID	109530
Gene Ontology	Hyperlink

Gene Summary

BLAST1 is the designation used for an activation-associated cell surface glycoprotein of 40 to 45 kD expressed primarily in mitogen-stimulated human lymphocytes. The protein sequence predicted by the cDNA encoding BLAST1 indicates that BLAST1 is a member of the immunoglobulin supergene family. Yokoyama (1991) identified the BLAST1 activation/adhesion molecule as CD48.[s supplied by OMIM

Other Designations

CD48 antigen (B-cell membrane protein)|OTTHUMP00000025680|OTTHUMP00000060268

Pathway

- [Natural killer cell mediated cytotoxicity](#)

Disease

- [Adenocarcinoma](#)
- [Cardiovascular Diseases](#)
- [Diabetes Mellitus](#)
- [Edema](#)
- [Esophageal Neoplasms](#)
- [Genetic Predisposition to Disease](#)
- [Schizophrenia](#)