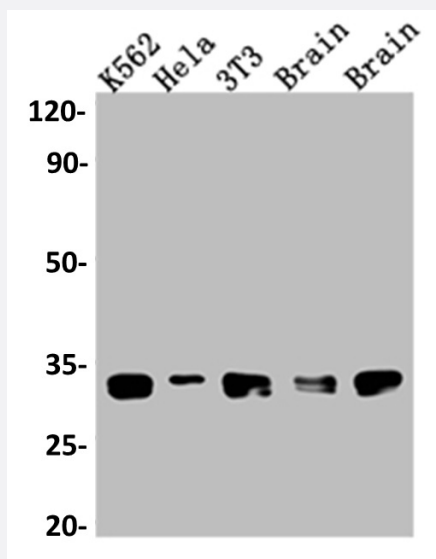


RecomAb™

# BCL2L1 recombinant monoclonal antibody, clone 5E9

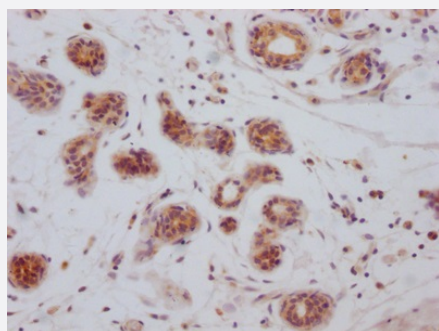
Catalog # RAB07530      Size 100 uL

## Applications



### Western Blot

Western blot analysis of K562 whole cell lysate, HeLa whole cell lysate, NIH/3T3 whole cell lysate, Rat Brain whole cell lysate, Mouse Brain whole cell lysate with BCL2L1 recombinant monoclonal antibody, clone 5E9 (Cat # RAB07530).



### Immunohistochemistry (Formalin/PFA-fixed paraffin-embedded sections)

Immunohistochemical analysis of paraffin-embedded human breast cancer with BCL2L1 recombinant monoclonal antibody, clone 5E9 (Cat # RAB07530) on a Leica Bond™ system. After dewaxing and hydration, antigen retrieval was mediated by high pressure in a citrate buffer (pH 6.0). Section was blocked with 10% normal goat serum 30min at RT. Then primary antibody (1% BSA) was incubated at 4°C overnight. The primary is detected by a Goat anti-rabbit IgG polymer labeled by HRP and visualized using 0.05% DAB.

## Specification

Product Description	Rabbit recombinant monoclonal antibody raised against human BCL2L1.
Antibody Species	Rabbit

<b>Immunogen</b>	Original antibody is raised against a synthetic peptide corresponding to human BCL2L1.
<b>Theoretical MW (kDa)</b>	Calculated MW: 27, 1
<b>Reactivity</b>	Human, Mouse, Rat
<b>Form</b>	Liquid
<b>Purification</b>	Affinity chromatography purification
<b>Isotype</b>	IgG
<b>Recommend Usage</b>	ELISA Immunohistochemistry (1:50-1:200) Western Blot (1:500-1:5000) The optimal working dilution should be determined by the end user.
<b>Storage Buffer</b>	In PBS, pH7.4 (150 mM NaCl, 0.02% sodium azide and 50% glycerol)
<b>Storage Instruction</b>	Store at -20°C or -80°C. Aliquot to avoid repeated freezing and thawing.
<b>Note</b>	This product contains sodium azide: a POISONOUS AND HAZARDOUS SUBSTANCE which should be handled by trained staff only.

## Applications

- Western Blot

Western blot analysis of K562 whole cell lysate, Hela whole cell lysate, NIH/3T3 whole cell lysate, Rat Brain whole cell lysate, Mouse Brain whole cell lysate with BCL2L1 recombinant monoclonal antibody, clone 5E9 (Cat # RAB07530).

- Immunohistochemistry (Formalin/PFA-fixed paraffin-embedded sections)

Immunohistochemical analysis of paraffin-embedded human breast cancer with BCL2L1 recombinant monoclonal antibody, clone 5E9 (Cat # RAB07530) on a Leica Bond™ system. After dewaxing and hydration, antigen retrieval was mediated by high pressure in a citrate buffer (pH 6.0). Section was blocked with 10% normal goat serum 30min at RT. Then primary antibody (1% BSA) was incubated at 4°C overnight. The primary is detected by a Goat anti-rabbit IgG polymer labeled by HRP and visualized using 0.05% DAB.

- Enzyme-linked Immunoabsorbent Assay

## Gene Info — BCL2L1

**Entrez GeneID** [598](#)

**Protein Accession#** [Q07817](#)

Gene Name	BCL2L1
Gene Alias	BCL-XL/S, BCL2L, BCLX, Bcl-X, DKFZp781P2092, bcl-xL, bcl-xS
Gene Description	BCL2-like 1
Omim ID	<a href="#">600039</a>
Gene Ontology	<a href="#">Hyperlink</a>
Gene Summary	<p>The protein encoded by this gene belongs to the BCL-2 protein family. BCL-2 family members form hetero- or homodimers and act as anti- or pro-apoptotic regulators that are involved in a wide variety of cellular activities. The proteins encoded by this gene are located at the outer mitochondrial membrane, and have been shown to regulate outer mitochondrial membrane channel (VDAC) opening. VDAC regulates mitochondrial membrane potential, and thus controls the production of reactive oxygen species and release of cytochrome C by mitochondria, both of which are the potent inducers of cell apoptosis. Two alternatively spliced transcript variants, which encode distinct isoforms, have been reported. The longer isoform acts as an apoptotic inhibitor and the shorter form acts as an apoptotic activator. [provided by RefSeq]</p>
Other Designations	OTTHUMP00000030550 OTTHUMP00000030551 OTTHUMP00000030553

## Pathway

- [Amyotrophic lateral sclerosis \(ALS\)](#)
- [Apoptosis](#)
- [Chronic myeloid leukemia](#)
- [Jak-STAT signaling pathway](#)
- [Pancreatic cancer](#)
- [Pathways in cancer](#)
- [Small cell lung cancer](#)

## Disease

- [Adenocarcinoma](#)
- [Alzheimer Disease](#)
- [Amnesia](#)
- [Cognition Disorders](#)

- [Colorectal Neoplasms](#)
- [Disease Progression](#)
- [Esophageal Neoplasms](#)
- [Genetic Predisposition to Disease](#)
- [Hematologic Diseases](#)
- [Hodgkin Disease](#)
- [Lymphoma](#)
- [Lymphoproliferative Disorders](#)
- [Multiple Sclerosis](#)
- [Neoplasm Metastasis](#)
- [Neuropsychological Tests](#)
- [Occupational Diseases](#)
- [Ovarian Neoplasms](#)
- [Prostatic Neoplasms](#)
- [Urinary Bladder Neoplasms](#)
- [Waldenstrom Macroglobulinemia](#)
- [Werner syndrome](#)