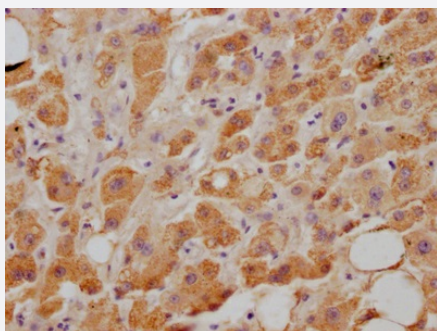


RecomAb™

NPC1L1 recombinant monoclonal antibody, clone 4B10

Catalog # RAB07519 Size 100 uL

Applications



Immunohistochemistry (Formalin/PFA-fixed paraffin-embedded sections)

Immunohistochemical analysis of paraffin-embedded human liver tissue using NPC1L1 recombinant monoclonal antibody, clone 4B10 (Cat # RAB07519) on a Leica Bond™ system. After dewaxing and hydration, antigen retrieval was mediated by high pressure in a citrate buffer (pH 6.0). Section was blocked with 10% normal goat serum 30min at RT. Then primary antibody (1% BSA) was incubated at 4°C overnight. The primary is detected by a Goat anti-rabbit IgG polymer labeled by HRP and visualized using 0.05% DAB.

Specification

Product Description	Rabbit recombinant monoclonal antibody raised against human NPC1L1.
Antibody Species	Rabbit
Immunogen	Original antibody is raised against a synthetic peptide corresponding to human NPC1L1.
Reactivity	Human
Form	Liquid
Purification	Affinity chromatography purification
Isotype	IgG
Recommend Usage	ELISA Immunohistochemistry (1:50-1:200) The optimal working dilution should be determined by the end user.
Storage Buffer	In PBS, pH7.4 (150 mM NaCl, 0.02% sodium azide and 50% glycerol)

Storage Instruction

Store at -20°C or -80°C.
Aliquot to avoid repeated freezing and thawing.

Note

This product contains sodium azide: a POISONOUS AND HAZARDOUS SUBSTANCE which should be handled by trained staff only.

Applications

- Immunohistochemistry (Formalin/PFA-fixed paraffin-embedded sections)

Immunohistochemical analysis of paraffin-embedded human liver tissue using NPC1L1 recombinant monoclonal antibody, clone 4B10 (Cat # RAB07519) on a Leica BondTM system. After dewaxing and hydration, antigen retrieval was mediated by high pressure in a citrate buffer (pH 6.0). Section was blocked with 10% normal goat serum 30min at RT. Then primary antibody (1% BSA) was incubated at 4°C overnight. The primary is detected by a Goat anti-rabbit IgG polymer labeled by HRP and visualized using 0.05% DAB.

- Enzyme-linked Immunoabsorbent Assay

Gene Info — NPC1L1

Entrez GeneID [29881](#)

Protein Accession# [Q9UHC9](#)

Gene Name NPC1L1

Gene Alias -

Gene Description NPC1 (Niemann-Pick disease, type C1, gene)-like 1

Omim ID [608010](#)

Gene Ontology [Hyperlink](#)

Gene Summary type C1

Other Designations Niemann-Pick C1-like protein 1

Disease

- [Cardiovascular Diseases](#)
- [Coronary Artery Disease](#)

- [Coronary Disease](#)
- [Diabetes Mellitus](#)
- [Edema](#)
- [Genetic Predisposition to Disease](#)
- [Hypercholesterolemia](#)
- [Hyperlipidemias](#)
- [Hyperlipoproteinemia Type II](#)
- [Kidney Failure](#)
- [Obesity](#)