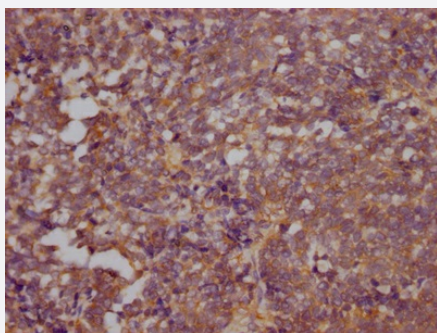


RecomAb™

RHOA recombinant monoclonal antibody, clone 3G7

Catalog # RAB07516 Size 100 uL

Applications



Immunohistochemistry (Formalin/PFA-fixed paraffin-embedded sections)

Immunohistochemical analysis of paraffin-embedded human lung cancer using RHOA recombinant monoclonal antibody, clone 3G7 (Cat # RAB07516) on a Leica Bond™ system. After dewaxing and hydration, antigen retrieval was mediated by high pressure in a citrate buffer (pH 6.0). Section was blocked with 10% normal goat serum 30min at RT. Then primary antibody (1% BSA) was incubated at 4°C overnight. The primary is detected by a Goat anti-rabbit IgG polymer labeled by HRP and visualized using 0.05% DAB.

Specification

Product Description	Rabbit recombinant monoclonal antibody raised against human RHOA.
Antibody Species	Rabbit
Immunogen	Original antibody is raised against a synthetic peptide corresponding to human RHOA.
Reactivity	Human
Form	Liquid
Purification	Affinity chromatography purification
Isotype	IgG
Recommend Usage	ELISA Immunohistochemistry (1:50-1:200) The optimal working dilution should be determined by the end user.
Storage Buffer	In PBS, pH7.4 (150 mM NaCl, 0.02% sodium azide and 50% glycerol)

Storage Instruction

Store at -20°C or -80°C.
Aliquot to avoid repeated freezing and thawing.

Note

This product contains sodium azide: a POISONOUS AND HAZARDOUS SUBSTANCE which should be handled by trained staff only.

Applications

- Immunohistochemistry (Formalin/PFA-fixed paraffin-embedded sections)

Immunohistochemical analysis of paraffin-embedded human lung cancer using RHOA recombinant monoclonal antibody, clone 3G7 (Cat # RAB07516) on a Leica BondTM system. After dewaxing and hydration, antigen retrieval was mediated by high pressure in a citrate buffer (pH 6.0). Section was blocked with 10% normal goat serum 30min at RT. Then primary antibody (1% BSA) was incubated at 4°C overnight. The primary is detected by a Goat anti-rabbit IgG polymer labeled by HRP and visualized using 0.05% DAB.

- Enzyme-linked Immunoabsorbent Assay

Gene Info — RHOA

Entrez GeneID[387](#)**Protein Accession#**[P61586](#)**Gene Name**

RHOA

Gene Alias

ARH12, ARHA, RHO12, RHOH12

Gene Description

ras homolog gene family, member A

Omim ID[165390](#)**Gene Ontology**[Hyperlink](#)**Gene Summary**

O

Other Designations

Aplysia ras-related homolog 12|oncogene RHO H12|small GTP binding protein RhoA

Pathway

- [Adherens junction](#)
- [Axon guidance](#)

- [Chemokine signaling pathway](#)
- [Colorectal cancer](#)
- [Focal adhesion](#)
- [Leukocyte transendothelial migration](#)
- [Neurotrophin signaling pathway](#)
- [Pathogenic Escherichia coli infection - EHEC](#)
- [Pathways in cancer](#)
- [Regulation of actin cytoskeleton](#)
- [T cell receptor signaling pathway](#)
- [TGF-beta signaling pathway](#)
- [Tight junction](#)
- [Vascular smooth muscle contraction](#)
- [Wnt signaling pathway](#)

Disease

- [Angina Pectoris](#)
- [Cardiovascular Diseases](#)
- [Coronary Vasospasm](#)
- [Crohn Disease](#)
- [Diabetes Mellitus](#)
- [Edema](#)
- [Genetic Predisposition to Disease](#)
- [Hematologic Diseases](#)
- [HIV Infections](#)
- [Occupational Diseases](#)