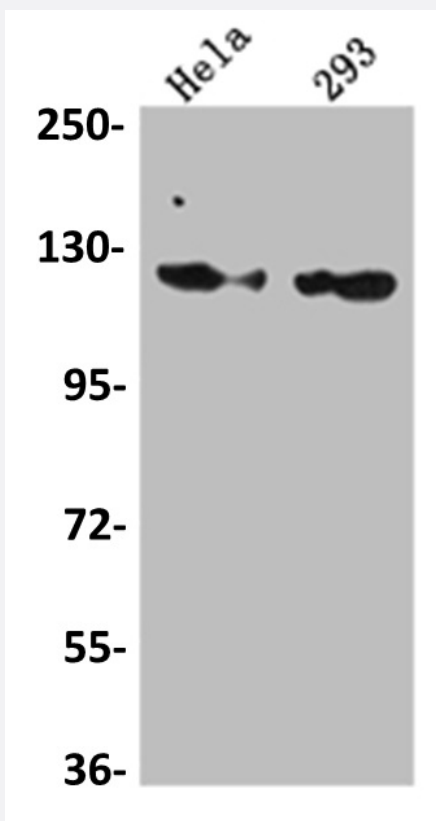


RecomAb™

RNF20 recombinant monoclonal antibody, clone 2H12

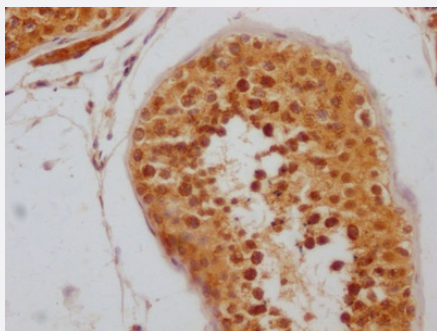
Catalog # RAB07509 Size 100 uL

Applications



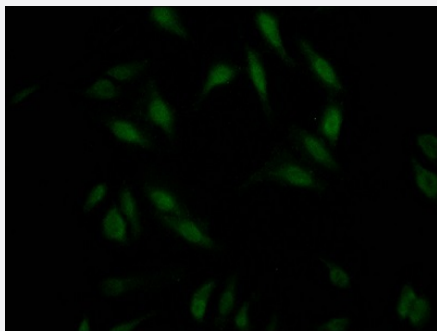
Western Blot (Cell lysate)

Western blot analysis of HeLa whole cell lysate, 293 whole cell lysate with RNF20 recombinant monoclonal antibody, clone 2H12 (Cat # RAB07509).



Immunohistochemistry (Formalin/PFA-fixed paraffin-embedded sections)

Immunohistochemical analysis of paraffin-embedded human testis tissue using RNF20 recombinant monoclonal antibody, clone 2H12 (Cat # RAB07509) on a Leica Bond™ system. After dewaxing and hydration, antigen retrieval was mediated by high pressure in a citrate buffer (pH 6.0). Section was blocked with 10% normal goat serum 30min at RT. Then primary antibody (1% BSA) was incubated at 4°C overnight. The primary is detected by a Goat anti-rabbit IgG polymer labeled by HRP and visualized using 0.05% DAB.



Immunofluorescence

Immunofluorescent staining of Hela Cells with RNF20 recombinant monoclonal antibody, clone 2H12 (Cat # RAB07509). The cells were fixed in 4% formaldehyde, permeated by 0.2% TritonX-100, and blocked in 10% normal Goat Serum. The cells were then incubated with the antibody overnight at 4°C. Nuclear DNA was labeled in blue with DAPI. The secondary antibody was FITC-conjugated AffiniPure Goat Anti-Rabbit IgG (H+L).

Specification

Product Description	Rabbit recombinant monoclonal antibody raised against human RNF20.
Antibody Species	Rabbit
Immunogen	Original antibody is raised against a synthetic peptide corresponding to human RNF20.
Theoretical MW (kDa)	114
Reactivity	Human
Form	Liquid
Purification	Affinity chromatography purification
Isotype	IgG
Recommend Usage	ELISA Immunofluorescence (1:20-1:200) Immunohistochemistry (1:50-1:200) Western Blot (1:500-1:5000) The optimal working dilution should be determined by the end user.
Storage Buffer	In PBS, pH7.4 (150 mM NaCl, 0.02% sodium azide and 50% glycerol)
Storage Instruction	Store at -20°C or -80°C. Aliquot to avoid repeated freezing and thawing.
Note	This product contains sodium azide: a POISONOUS AND HAZARDOUS SUBSTANCE which should be handled by trained staff only.

Applications

- Western Blot (Cell lysate)

Western blot analysis of Hela whole cell lysate, 293 whole cell lysate with RNF20 recombinant monoclonal antibody, clone 2H12 (Cat # RAB07509).

- Immunohistochemistry (Formalin/PFA-fixed paraffin-embedded sections)

Immunohistochemical analysis of paraffin-embedded human testis tissue using RNF20 recombinant monoclonal antibody, clone 2H12 (Cat # RAB07509) on a Leica BondTM system. After dewaxing and hydration, antigen retrieval was mediated by high pressure in a citrate buffer (pH 6.0). Section was blocked with 10% normal goat serum 30min at RT. Then primary antibody (1% BSA) was incubated at 4°C overnight. The primary is detected by a Goat anti-rabbit IgG polymer labeled by HRP and visualized using 0.05% DAB.

- Immunofluorescence

Immunofluorescent staining of Hela Cells with RNF20 recombinant monoclonal antibody, clone 2H12 (Cat # RAB07509). The cells were fixed in 4% formaldehyde, permeated by 0.2% TritonX-100, and blocked in 10% normal Goat Serum. The cells were then incubated with the antibody overnight at 4°C. Nuclear DNA was labeled in blue with DAPI. The secondary antibody was FITC-conjugated AffiniPure Goat Anti-Rabbit IgG (H+L).

- Enzyme-linked Immunoabsorbent Assay

Gene Info — RNF20

Entrez GeneID	56254
---------------	-----------------------

Protein Accession#	Q5VTR2
--------------------	------------------------

Gene Name	RNF20
-----------	-------

Gene Alias	BRE1, BRE1A, FLJ11189, FLJ20382, KIAA2779, MGC129667, MGC129668, hBRE1
------------	--

Gene Description	ring finger protein 20
------------------	------------------------

Omim ID	607699
---------	------------------------

Gene Ontology	Hyperlink
---------------	---------------------------

Gene Summary	The protein encoded by this gene shares similarity with BRE1 of <i>S. cerevisiae</i> . Yeast BRE1 is a ubiquitin ligase required for the ubiquitination of histone H2B and the methylation of histone H3. [provided by RefSeq]
--------------	--

Other Designations	BRE1 E3 ubiquitin ligase homolog homolog of <i>S. cerevisiae</i> BRE1
--------------------	---