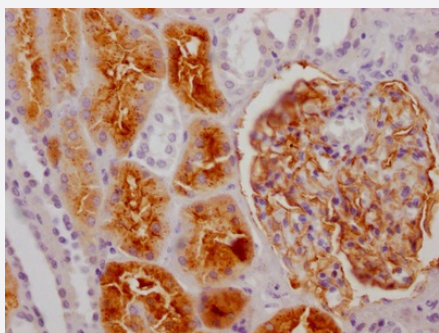


RecomAb™

# ENPEP recombinant monoclonal antibody, clone 2G11

Catalog # RAB07508      Size 100 uL

## Applications



### Immunohistochemistry (Formalin/PFA-fixed paraffin-embedded sections)

Immunohistochemical analysis of paraffin-embedded human kidney tissue using ENPEP recombinant monoclonal antibody, clone 2G11 (Cat # RAB07508) on a Leica Bond™ system. After dewaxing and hydration, antigen retrieval was mediated by high pressure in a citrate buffer (pH 6.0). Section was blocked with 10% normal goat serum 30min at RT. Then primary antibody (1% BSA) was incubated at 4°C overnight. The primary is detected by a Goat anti-rabbit IgG polymer labeled by HRP and visualized using 0.05% DAB.

## Specification

Product Description	Rabbit recombinant monoclonal antibody raised against human ENPEP.
Antibody Species	Rabbit
Immunogen	Original antibody is raised against a synthetic peptide corresponding to human ENPEP.
Reactivity	Human
Form	Liquid
Purification	Affinity chromatography purification
Isotype	IgG
Recommend Usage	ELISA Immunohistochemistry (1:50-1:200) The optimal working dilution should be determined by the end user.
Storage Buffer	In PBS, pH7.4 (150 mM NaCl, 0.02% sodium azide and 50% glycerol)

**Storage Instruction**

Store at -20°C or -80°C.  
Aliquot to avoid repeated freezing and thawing.

**Note**

This product contains sodium azide: a POISONOUS AND HAZARDOUS SUBSTANCE which should be handled by trained staff only.

## Applications

- Immunohistochemistry (Formalin/PFA-fixed paraffin-embedded sections)

Immunohistochemical analysis of paraffin-embedded human kidney tissue using ENPEP recombinant monoclonal antibody, clone 2G11 (Cat # RAB07508) on a Leica Bond<sup>TM</sup> system. After dewaxing and hydration, antigen retrieval was mediated by high pressure in a citrate buffer (pH 6.0). Section was blocked with 10% normal goat serum 30min at RT. Then primary antibody (1% BSA) was incubated at 4°C overnight. The primary is detected by a Goat anti-rabbit IgG polymer labeled by HRP and visualized using 0.05% DAB.

- Enzyme-linked Immunoabsorbent Assay

## Gene Info — ENPEP

Entrez GeneID [2028](#)

Protein Accession# [Q07075](#)

Gene Name ENPEP

Gene Alias APA, CD249, gp160

Gene Description glutamyl aminopeptidase (aminopeptidase A)

Omim ID [138297](#)

Gene Ontology [Hyperlink](#)

Other Designations -

## Pathway

- [Renin-angiotensin system](#)

## Disease

- [Alcoholism](#)
- [Genetic Predisposition to Disease](#)
- [Glomerulosclerosis](#)
- [Tobacco Use Disorder](#)