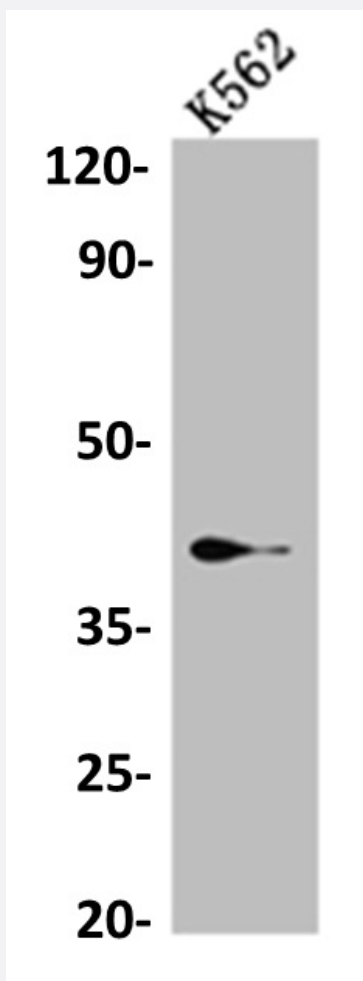


RecomAb™

SAE1 recombinant monoclonal antibody, clone 9D8

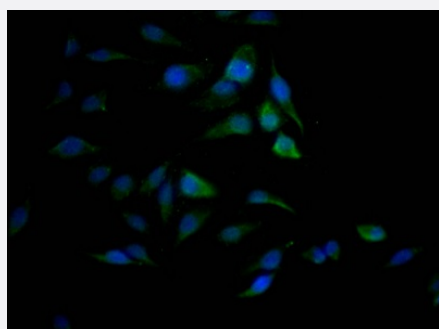
Catalog # RAB07481 Size 100 uL

Applications



Western Blot (Cell lysate)

Western blot analysis of K562 whole cell lysate with SAE1 recombinant monoclonal antibody, clone 9D8 (Cat # RAB07481).



Immunofluorescence

Immunofluorescent staining of HeLa Cells with SAE1 recombinant monoclonal antibody, clone 9D8 (Cat # RAB07481). The cells were fixed in 4% formaldehyde, permeated by 0.2% TritonX-100, and blocked in 10% normal Goat Serum. The cells were then incubated with the antibody overnight at 4°C. Nuclear DNA was labeled in blue with DAPI. The secondary antibody was FITC-conjugated AffiniPure Goat Anti-Rabbit IgG (H+L).

Specification

Product Description	Rabbit recombinant monoclonal antibody raised against human SAE1.
Antibody Species	Rabbit
Immunogen	Original antibody is raised against a synthetic peptide corresponding to human SAE1.
Theoretical MW (kDa)	Calculated MW: 39, 3
Reactivity	Human
Form	Liquid
Purification	Affinity chromatography purification
Isotype	IgG
Recommend Usage	ELISA Immunofluorescence (1:20-1:200) Western Blot (1:500-1:5000) The optimal working dilution should be determined by the end user.
Storage Buffer	In PBS, pH7.4 (150 mM NaCl, 0.02% sodium azide and 50% glycerol)
Storage Instruction	Store at -20°C or -80°C. Aliquot to avoid repeated freezing and thawing.
Note	This product contains sodium azide: a POISONOUS AND HAZARDOUS SUBSTANCE which should be handled by trained staff only.

Applications

- Western Blot (Cell lysate)

Western blot analysis of K562 whole cell lysate with SAE1 recombinant monoclonal antibody, clone 9D8 (Cat # RAB07481).

- Immunofluorescence

Immunofluorescent staining of Hela Cells with SAE1 recombinant monoclonal antibody, clone 9D8 (Cat # RAB07481). The cells were fixed in 4% formaldehyde, permeated by 0.2% TritonX-100, and blocked in 10% normal Goat Serum. The cells were then incubated with the antibody overnight at 4°C. Nuclear DNA was labeled in blue with DAPI. The secondary antibody was FITC-conjugated AffiniPure Goat Anti-Rabbit IgG (H+L).

- Enzyme-linked Immunoabsorbent Assay

Gene Info — SAE1

Entrez GeneID	10055
Protein Accession#	Q9UBE0
Gene Name	SAE1
Gene Alias	AOS1, FLJ3091, HSPC140, SUA1
Gene Description	SUMO1 activating enzyme subunit 1
Gene Ontology	Hyperlink
Other Designations	SUMO-1 activating enzyme E1 N subunit SUMO-1 activating enzyme subunit 1 activator of SUMO 1 sentrin/SUMO-activating protein AOS1 ubiquitin-like protein SUMO-1 activating enzyme

Pathway

- [Ubiquitin mediated proteolysis](#)