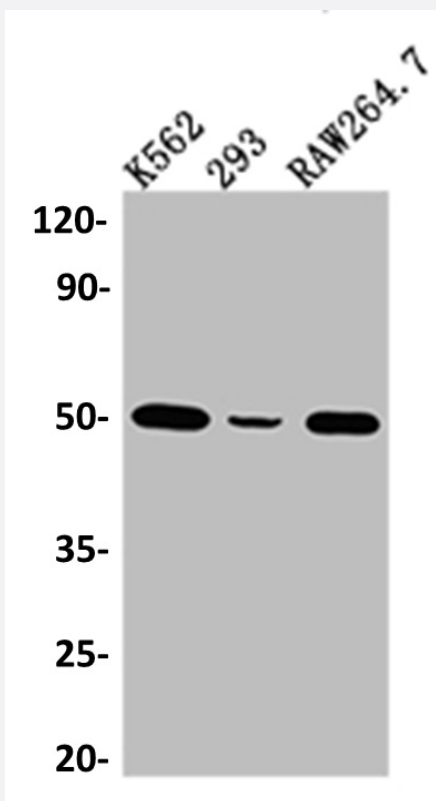


RecomAb™

EIF4A1 recombinant monoclonal antibody, clone 7C3

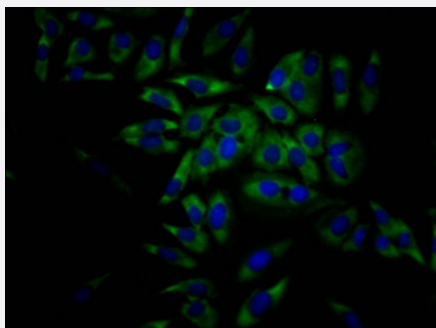
Catalog # RAB07464 Size 100 uL

Applications



Western Blot (Cell lysate)

Western blot analysis of K562 whole cell lysate, 293 whole cell lysate, RAW264.7 whole cell lysate with EIF4A1 recombinant monoclonal antibody, clone 7C3 (Cat # RAB07464).



Immunofluorescence

Immunofluorescent staining of HeLa Cells with EIF4A1 recombinant monoclonal antibody, clone 7C3 (Cat # RAB07464). The cells were fixed in 4% formaldehyde, permeated by 0.2% TritonX-100, and blocked in 10% normal Goat Serum. The cells were then incubated with the antibody overnight at 4°C. Nuclear DNA was labeled in blue with DAPI. The secondary antibody was FITC-conjugated AffiniPure Goat Anti-Rabbit IgG (H+L).

Specification

Product Description	Rabbit recombinant monoclonal antibody raised against human EIF4A1.
Antibody Species	Rabbit
Immunogen	Original antibody is raised against a synthetic peptide corresponding to human EIF4A1.
Theoretical MW (kDa)	Calculated MW: 40, 4
Reactivity	Human
Form	Liquid
Purification	Affinity chromatography purification
Isotype	IgG
Recommend Usage	ELISA Immunofluorescence (1:20-1:200) Western Blot (1:500-1:5000) The optimal working dilution should be determined by the end user.
Storage Buffer	In PBS, pH7.4 (150 mM NaCl, 0.02% sodium azide and 50% glycerol)
Storage Instruction	Store at -20°C or -80°C. Aliquot to avoid repeated freezing and thawing.
Note	This product contains sodium azide: a POISONOUS AND HAZARDOUS SUBSTANCE which should be handled by trained staff only.

Applications

- Western Blot (Cell lysate)

Western blot analysis of K562 whole cell lysate, 293 whole cell lysate, RAW264.7 whole cell lysate with EIF4A1 recombinant monoclonal antibody, clone 7C3 (Cat # RAB07464).

- Immunofluorescence

Immunofluorescent staining of Hela Cells with EIF4A1 recombinant monoclonal antibody, clone 7C3 (Cat # RAB07464). The cells were fixed in 4% formaldehyde, permeated by 0.2% TritonX-100, and blocked in 10% normal Goat Serum. The cells were then incubated with the antibody overnight at 4°C. Nuclear DNA was labeled in blue with DAPI. The secondary antibody was FITC-conjugated AffiniPure Goat Anti-Rabbit IgG (H+L).

- Enzyme-linked Immunoabsorbent Assay

Gene Info — EIF4A1

Entrez GeneID	1973
Protein Accession#	P60842
Gene Name	EIF4A1
Gene Alias	DDX2A, EIF-4A, EIF4A
Gene Description	eukaryotic translation initiation factor 4A, isoform 1
Omim ID	602641
Gene Ontology	Hyperlink
Gene Summary	O
Other Designations	OTTHUMP00000135288 eukaryotic initiation factor 4A eukaryotic translation initiation factor 4A i soform 1