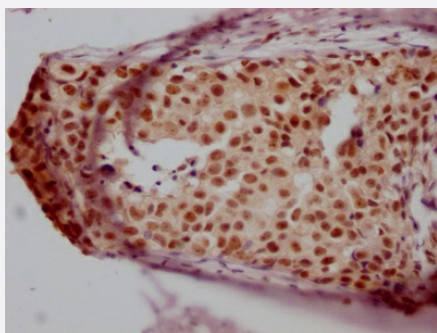


RecomAb™

JUNB recombinant monoclonal antibody, clone 5H4

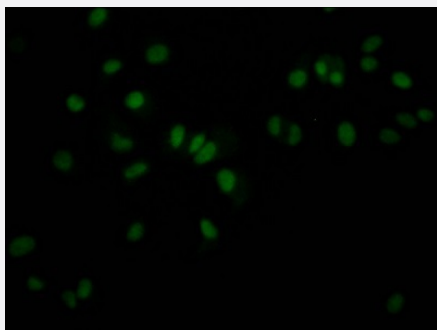
Catalog # RAB07453 Size 100 uL

Applications



Immunohistochemistry (Formalin/PFA-fixed paraffin-embedded sections)

Immunohistochemical analysis of paraffin-embedded human breast cancer using JUNB recombinant monoclonal antibody, clone 5H4 (Cat # RAB07453) on a Leica Bond™ system. After dewaxing and hydration, antigen retrieval was mediated by high pressure in a citrate buffer (pH 6.0). Section was blocked with 10% normal goat serum 30min at RT. Then primary antibody (1% BSA) was incubated at 4°C overnight. The primary is detected by a Goat anti-rabbit IgG polymer labeled by HRP and visualized using 0.05% DAB.



Immunofluorescence

Immunofluorescent staining of MCF7 Cells with JUNB recombinant monoclonal antibody, clone 5H4 (Cat # RAB07453). The cells were fixed in 4% formaldehyde, permeated by 0.2% TritonX-100, and blocked in 10% normal Goat Serum. The cells were then incubated with the antibody overnight at 4°C. Nuclear DNA was labeled in blue with DAPI. The secondary antibody was FITC-conjugated AffiniPure Goat Anti-Rabbit IgG (H+L).

Specification

Product Description	Rabbit recombinant monoclonal antibody raised against human JUNB.
Antibody Species	Rabbit
Immunogen	Original antibody is raised against a synthetic peptide corresponding to human JUNB.
Reactivity	Human
Form	Liquid

Purification	Affinity chromatography purification
Isotype	IgG
Recommend Usage	ELISA Immunofluorescence (1:20-1:200) Immunohistochemistry (1:50-1:200) The optimal working dilution should be determined by the end user.
Storage Buffer	In PBS, pH7.4 (150 mM NaCl, 0.02% sodium azide and 50% glycerol)
Storage Instruction	Store at -20°C or -80°C. Aliquot to avoid repeated freezing and thawing.
Note	This product contains sodium azide: a POISONOUS AND HAZARDOUS SUBSTANCE which should be handled by trained staff only.

Applications

- Immunohistochemistry (Formalin/PFA-fixed paraffin-embedded sections)

Immunohistochemical analysis of paraffin-embedded human breast cancer using JUNB recombinant monoclonal antibody, clone 5H4 (Cat # RAB07453) on a Leica Bond™ system. After dewaxing and hydration, antigen retrieval was mediated by high pressure in a citrate buffer (pH 6.0). Section was blocked with 10% normal goat serum 30min at RT. Then primary antibody (1% BSA) was incubated at 4°C overnight. The primary is detected by a Goat anti-rabbit IgG polymer labeled by HRP and visualized using 0.05% DAB.

- Immunofluorescence

Immunofluorescent staining of MCF7 Cells with JUNB recombinant monoclonal antibody, clone 5H4 (Cat # RAB07453). The cells were fixed in 4% formaldehyde, permeated by 0.2% TritonX-100, and blocked in 10% normal Goat Serum. The cells were then incubated with the antibody overnight at 4°C. Nuclear DNA was labeled in blue with DAPI. The secondary antibody was FITC-conjugated AffiniPure Goat Anti-Rabbit IgG (H+L).

- Enzyme-linked Immunoabsorbent Assay

Gene Info — JUNB

Entrez GeneID	3726
Protein Accession#	P17275
Gene Name	JUNB
Gene Alias	AP-1
Gene Description	jun B proto-oncogene

Omim ID	165161
Gene Ontology	Hyperlink
Other Designations	activator protein 1

Disease

- [Alzheimer disease](#)
- [Cognition](#)