

RecomAb™

## GABRA5 recombinant monoclonal antibody, clone 5C11

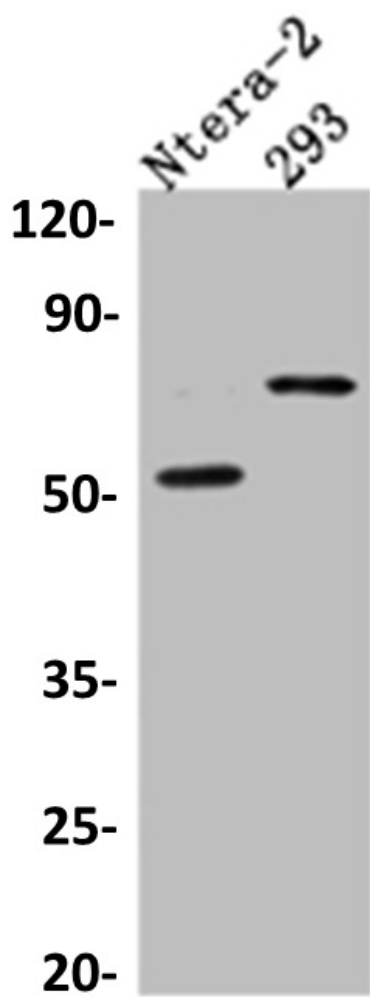
Catalog # RAB07448

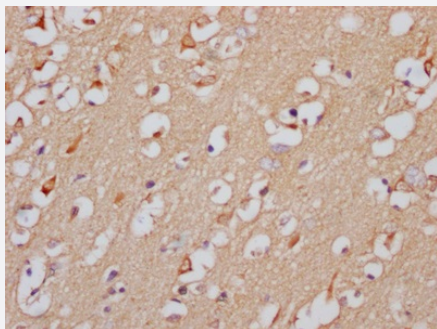
Size 100 uL

### Applications

#### Western Blot (Cell lysate)

Western blot analysis of Ntera-2 whole cell lysate, HEK293 whole cell lysate with GABRA5 recombinant monoclonal antibody, clone 5C11 (Cat # RAB07448).





## Immunohistochemistry (Formalin/PFA-fixed paraffin-embedded sections)

Immunohistochemical analysis of paraffin-embedded human brain tissue using GABRA5 recombinant monoclonal antibody, clone 5C11 (Cat # RAB07448) on a Leica Bond™ system. After dewaxing and hydration, antigen retrieval was mediated by high pressure in a citrate buffer (pH 6.0). Section was blocked with 10% normal goat serum 30min at RT. Then primary antibody (1% BSA) was incubated at 4°C overnight. The primary is detected by a Goat anti-rabbit IgG polymer labeled by HRP and visualized using 0.05% DAB.

## Specification

<b>Product Description</b>	Rabbit recombinant monoclonal antibody raised against human GABRA5.
<b>Antibody Species</b>	Rabbit
<b>Immunogen</b>	Original antibody is raised against a synthetic peptide corresponding to human GABRA5.
<b>Theoretical MW (kDa)</b>	Calculated MW: 53
<b>Reactivity</b>	Human
<b>Form</b>	Liquid
<b>Purification</b>	Affinity chromatography purification
<b>Isotype</b>	IgG
<b>Recommend Usage</b>	ELISA Immunohistochemistry (1:50-1:200) Western Blot (1:500-1:5000) The optimal working dilution should be determined by the end user.
<b>Storage Buffer</b>	In PBS, pH7.4 (150 mM NaCl, 0.02% sodium azide and 50% glycerol)
<b>Storage Instruction</b>	Store at -20°C or -80°C. Aliquot to avoid repeated freezing and thawing.
<b>Note</b>	This product contains sodium azide: a POISONOUS AND HAZARDOUS SUBSTANCE which should be handled by trained staff only.

## Applications

- Western Blot (Cell lysate)

Western blot analysis of Ntera-2 whole cell lysate, HEK293 whole cell lysate with GABRA5 recombinant monoclonal antibody, clone 5C11 (Cat # RAB07448).

- Immunohistochemistry (Formalin/PFA-fixed paraffin-embedded sections)

Immunohistochemical analysis of paraffin-embedded human brain tissue using GABRA5 recombinant monoclonal antibody, clone 5C11 (Cat # RAB07448) on a Leica Bond™ system. After dewaxing and hydration, antigen retrieval was mediated by high pressure in a citrate buffer (pH 6.0). Section was blocked with 10% normal goat serum 30min at RT. Then primary antibody (1% BSA) was incubated at 4°C overnight. The primary is detected by a Goat anti-rabbit IgG polymer labeled by HRP and visualized using 0.05% DAB.

- Enzyme-linked Immunoabsorbent Assay

## Gene Info — GABRA5

Entrez GeneID [2558](#)

Protein Accession# [P31644](#)

Gene Name GABRA5

Gene Alias MGC138184

Gene Description gamma-aminobutyric acid (GABA) A receptor, alpha 5

Omim ID [137142](#)

Gene Ontology [Hyperlink](#)

**Gene Summary** GABA is the major inhibitory neurotransmitter in the mammalian brain where it acts at GABA-A receptors, which are ligand-gated chloride channels. Chloride conductance of these channels can be modulated by agents such as benzodiazepines that bind to the GABA-A receptor. At least 16 distinct subunits of GABA-A receptors have been identified. Transcript variants utilizing three different alternative non-coding first exons have been described. [provided by RefSeq]

Other Designations -

## Pathway

- [Neuroactive ligand-receptor interaction](#)

## Disease

- [Anorexia Nervosa](#)
- [Attention Deficit Disorder with Hyperactivity](#)
- [Autistic Disorder](#)
- [Bipolar Disorder](#)
- [Bulimia](#)
- [Cardiovascular Diseases](#)
- [Diabetes Mellitus](#)
- [Edema](#)
- [Epilepsy](#)
- [Genetic Predisposition to Disease](#)
- [Mental Disorders](#)
- [Mental Retardation](#)
- [Migraine with Aura](#)
- [Mood Disorders](#)
- [NARP](#)
- [Psychotic Disorders](#)
- [Schizophrenia](#)