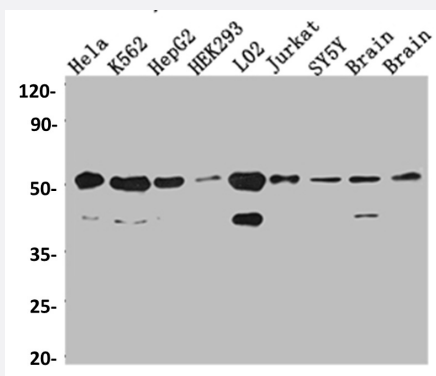


RecomAb™

RBBP4 recombinant monoclonal antibody, clone 3E9

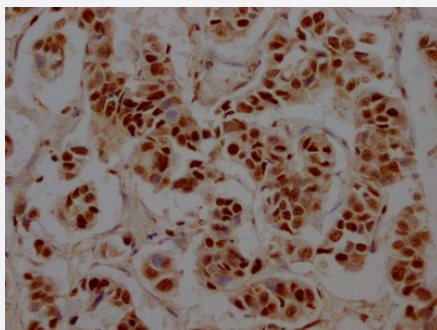
Catalog # RAB07434 Size 100 uL

Applications



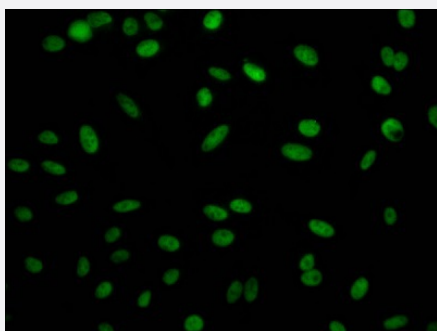
Western Blot

Western blot analysis of HeLa whole cell lysate, K562 whole cell lysate, HepG2 whole cell lysate, HEK293 whole cell lysate, L02 whole cell lysate, Jurkat whole cell lysate, SH-SY5Y whole cell lysate, Mouse Brain whole cell lysate, Rat Brain cell lysate with RBBP4 recombinant monoclonal antibody, clone 3E9 (Cat # RAB07434).



Immunohistochemistry (Formalin/PFA-fixed paraffin-embedded sections)

Immunohistochemical analysis of paraffin-embedded human breast cancer using RBBP4 recombinant monoclonal antibody, clone 3E9 (Cat # RAB07434) on a Leica Bond™ system. After dewaxing and hydration, antigen retrieval was mediated by high pressure in a citrate buffer (pH 6.0). Section was blocked with 10% normal goat serum 30min at RT. Then primary antibody (1% BSA) was incubated at 4°C overnight. The primary is detected by a Goat anti-rabbit IgG polymer labeled by HRP and visualized using 0.05% DAB.



Immunofluorescence

Immunofluorescent staining of HeLa Cells with RBBP4 recombinant monoclonal antibody, clone 3E9 (Cat # RAB07434). The cells were fixed in 4% formaldehyde, permeated by 0.2% TritonX-100, and blocked in 10% normal Goat Serum. The cells were then incubated with the antibody overnight at 4°C. Nuclear DNA was labeled in blue with DAPI. The secondary antibody was FITC-conjugated AffiniPure Goat Anti-Rabbit IgG (H+L).

Specification

Product Description	Rabbit recombinant monoclonal antibody raised against human RBBP4.
Antibody Species	Rabbit
Immunogen	Original antibody is raised against a synthetic peptide corresponding to human RBBP4.
Theoretical MW (kDa)	Calculated MW: 48, 4
Reactivity	Human, Mouse, Rat
Form	Liquid
Purification	Affinity chromatography purification
Isotype	IgG
Recommend Usage	ELISA Immunofluorescence (1:20-1:200) Immunohistochemistry (1:50-1:200) Western Blot (1:500-1:5000) The optimal working dilution should be determined by the end user.
Storage Buffer	In PBS, pH7.4 (150 mM NaCl, 0.02% sodium azide and 50% glycerol)
Storage Instruction	Store at -20°C or -80°C. Aliquot to avoid repeated freezing and thawing.
Note	This product contains sodium azide: a POISONOUS AND HAZARDOUS SUBSTANCE which should be handled by trained staff only.

Applications

- Western Blot

Western blot analysis of Hela whole cell lysate, K562 whole cell lysate, HepG2 whole cell lysate, HEK293 whole cell lysate, L02 whole cell lysate, Jurkat whole cell lysate, SH-SY5Y whole cell lysate, Mouse Brain whole cell lysate, Rat Brain cell lysate with RBBP4 recombinant monoclonal antibody, clone 3E9 (Cat # RAB07434).

- Immunohistochemistry (Formalin/PFA-fixed paraffin-embedded sections)

Immunohistochemical analysis of paraffin-embedded human breast cancer using RBBP4 recombinant monoclonal antibody, clone 3E9 (Cat # RAB07434) on a Leica BondTM system. After dewaxing and hydration, antigen retrieval was mediated by high pressure in a citrate buffer (pH 6.0). Section was blocked with 10% normal goat serum 30min at RT. Then primary antibody (1% BSA) was incubated at 4°C overnight. The primary is detected by a Goat anti-rabbit IgG polymer labeled by HRP and visualized using 0.05% DAB.

- Immunofluorescence

Immunofluorescent staining of Hela Cells with RBBP4 recombinant monoclonal antibody, clone 3E9 (Cat # RAB07434). The cells were fixed in 4% formaldehyde, permeated by 0.2% TritonX-100, and blocked in 10% normal Goat Serum. The cells were then incubated with the antibody overnight at 4°C. Nuclear DNA was labeled in blue with DAPI. The secondary antibody was FITC-conjugated AffiniPure Goat Anti-Rabbit IgG (H+L).

- Enzyme-linked Immunoabsorbent Assay

Gene Info — RBBP4

Entrez GeneID [5928](#)

Protein Accession# [Q09028](#)

Gene Name RBBP4

Gene Alias NURF55, RBAP48

Gene Description retinoblastoma binding protein 4

Omim ID [602923](#)

Gene Ontology [Hyperlink](#)

Gene Summary This gene encodes a ubiquitously expressed nuclear protein which belongs to a highly conserved subfamily of WD-repeat proteins. It is present in protein complexes involved in histone acetylation and chromatin assembly. It is part of the Mi-2 complex which has been implicated in chromatin re modeling and transcriptional repression associated with histone deacetylation. This encoded protein is also part of co-repressor complexes, which is an integral component of transcriptional silencing. It is found among several cellular proteins that bind directly to retinoblastoma protein to regulate cell proliferation. This protein also seems to be involved in transcriptional repression of E2F-responsive genes. Three transcript variants encoding different isoforms have been found for this gene. [provided by RefSeq]

Other Designations MS11 protein homolog|OTTHUMP00000009691|chromatin assembly factor/CAF-1 p48 subunit|retinoblastoma-binding protein 4|retinoblastoma-binding protein p48

Disease

- [Cardiovascular Diseases](#)
- [Diabetes Mellitus](#)
- [Edema](#)