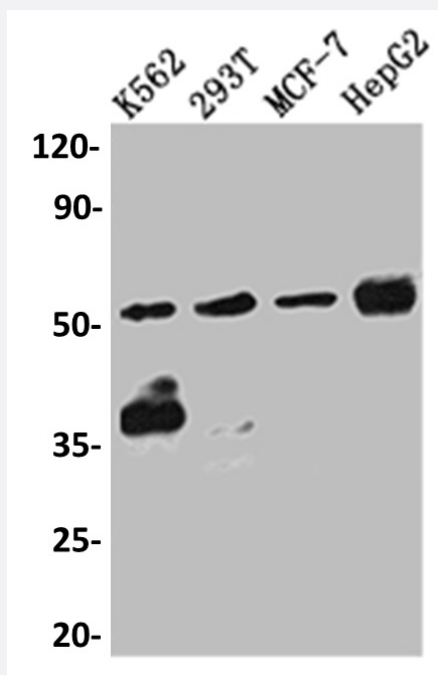


RecomAb™

CHEK1 recombinant monoclonal antibody, clone 2F2

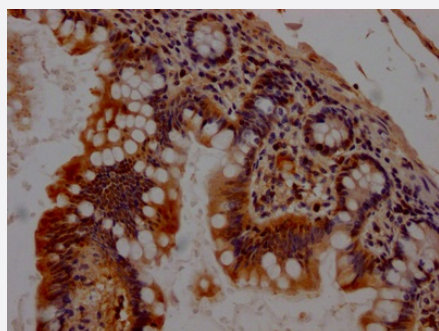
Catalog # RAB07427 Size 100 uL

Applications



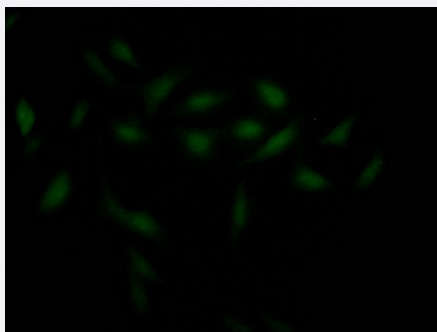
Western Blot (Cell lysate)

Western blot analysis of K562 whole cell lysate, 293T whole cell lysate, MCF-7 whole cell lysate, HepG2 whole cell lysate with CHEK1 recombinant monoclonal antibody, clone 2F2 (Cat # RAB07427).



Immunohistochemistry (Formalin/PFA-fixed paraffin-embedded sections)

Immunohistochemical analysis of paraffin-embedded human small intestine tissue using CHEK1 recombinant monoclonal antibody, clone 2F2 (Cat # RAB07427) on a Leica Bond™ system. After dewaxing and hydration, antigen retrieval was mediated by high pressure in a citrate buffer (pH 6.0). Section was blocked with 10% normal goat serum 30min at RT. Then primary antibody (1% BSA) was incubated at 4°C overnight. The primary is detected by a Goat anti-rabbit IgG polymer labeled by HRP and visualized using 0.05% DAB.



Immunofluorescence

Immunofluorescent staining of Hela Cells with CHEK1 recombinant monoclonal antibody, clone 2F2 (Cat # RAB07427). The cells were fixed in 4% formaldehyde, permeated by 0.2% TritonX-100, and blocked in 10% normal Goat Serum. The cells were then incubated with the antibody overnight at 4°C. Nuclear DNA was labeled in blue with DAPI. The secondary antibody was FITC-conjugated AffiniPure Goat Anti-Rabbit IgG (H+L).

Specification

Product Description	Rabbit recombinant monoclonal antibody raised against human CHEK1.
Antibody Species	Rabbit
Immunogen	Original antibody is raised against a synthetic peptide corresponding to human CHEK1.
Theoretical MW (kDa)	Calculated MW: 55, 4
Reactivity	Human
Form	Liquid
Purification	Affinity chromatography purification
Isotype	IgG
Recommend Usage	ELISA Immunofluorescence (1:20-1:200) Immunohistochemistry (1:50-1:200) Western Blot (1:500-1:5000) The optimal working dilution should be determined by the end user.
Storage Buffer	In PBS, pH7.4 (150 mM NaCl, 0.02% sodium azide and 50% glycerol)
Storage Instruction	Store at -20°C or -80°C. Aliquot to avoid repeated freezing and thawing.
Note	This product contains sodium azide: a POISONOUS AND HAZARDOUS SUBSTANCE which should be handled by trained staff only.

Applications

- Western Blot (Cell lysate)

Western blot analysis of K562 whole cell lysate, 293T whole cell lysate, MCF-7 whole cell lysate, HepG2 whole cell lysate with CHEK1 recombinant monoclonal antibody, clone 2F2 (Cat # RAB07427).

- Immunohistochemistry (Formalin/PFA-fixed paraffin-embedded sections)

Immunohistochemical analysis of paraffin-embedded human small intestine tissue using CHEK1 recombinant monoclonal antibody, clone 2F2 (Cat # RAB07427) on a Leica BondTM system. After dewaxing and hydration, antigen retrieval was mediated by high pressure in a citrate buffer (pH 6.0). Section was blocked with 10% normal goat serum 30min at RT. Then primary antibody (1% BSA) was incubated at 4°C overnight. The primary is detected by a Goat anti-rabbit IgG polymer labeled by HRP and visualized using 0.05% DAB.

- Immunofluorescence

Immunofluorescent staining of Hela Cells with CHEK1 recombinant monoclonal antibody, clone 2F2 (Cat # RAB07427). The cells were fixed in 4% formaldehyde, permeated by 0.2% TritonX-100, and blocked in 10% normal Goat Serum. The cells were then incubated with the antibody overnight at 4°C. Nuclear DNA was labeled in blue with DAPI. The secondary antibody was FITC-conjugated AffiniPure Goat Anti-Rabbit IgG (H+L).

- Enzyme-linked Immunoabsorbent Assay

Gene Info — CHEK1

Entrez GeneID [1111](#)

Protein Accession# [O14757](#)

Gene Name CHEK1

Gene Alias CHK1

Gene Description CHK1 checkpoint homolog (S. pombe)

Omim ID [603078](#)

Gene Ontology [Hyperlink](#)

Gene Summary S. pombe

Other Designations CHK1 checkpoint homolog|Checkpoint, S. pombe, homolog of, 1

Pathway

- [Cell cycle](#)
- [p53 signaling pathway](#)

Disease

- [Adenocarcinoma](#)
- [Adenofibroma](#)
- [Ataxia telangiectasia](#)
- [Brain Neoplasms](#)
- [Breast cancer](#)
- [Breast Neoplasms](#)
- [Carcinoma](#)
- [Colon cancer](#)
- [Colonic Neoplasms](#)
- [Colorectal Neoplasms](#)
- [DNA Damage](#)
- [Esophageal Neoplasms](#)
- [Genetic Predisposition to Disease](#)
- [Glioma](#)
- [Kidney Failure](#)
- [Lung Neoplasms](#)
- [Meningeal Neoplasms](#)
- [Meningioma](#)
- [Microsatellite Instability](#)
- [Neoplasms](#)
- [Neuroma](#)
- [Ovarian cancer](#)
- [Ovarian Neoplasms](#)
- [Pancreatic cancer](#)

- [Pancreatic Neoplasms](#)
- [Pulmonary Disease](#)
- [Urinary Bladder Neoplasms](#)
- [Werner syndrome](#)