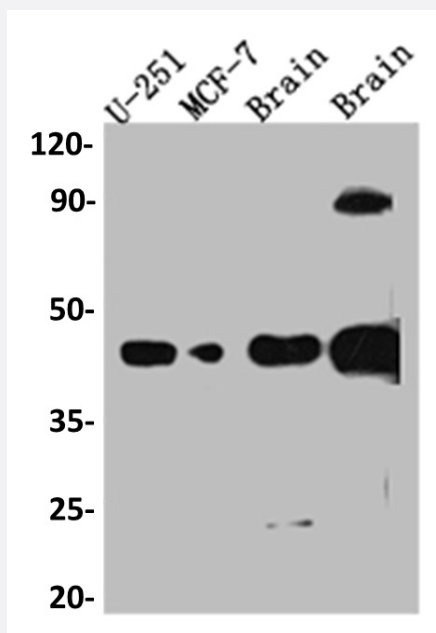


RecomAb™

## SOX2 recombinant monoclonal antibody, clone 2E1

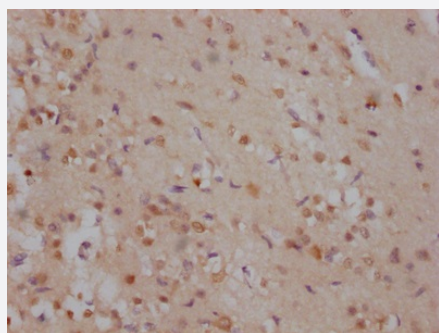
Catalog # RAB07426      Size 100 uL

### Applications



#### Western Blot

Western blot analysis of U-251 whole cell lysate, MCF-7 whole cell lysate, Mouse Brain whole cell lysate, Rat Brain whole cell lysate with SOX2 recombinant monoclonal antibody, clone 2E1 (Cat # RAB07426).



#### Immunohistochemistry (Formalin/PFA-fixed paraffin-embedded sections)

Immunohistochemical analysis of paraffin-embedded human brain tissue using SOX2 recombinant monoclonal antibody, clone 2E1 (Cat # RAB07426) on a Leica Bond™ system. After dewaxing and hydration, antigen retrieval was mediated by high pressure in a citrate buffer (pH 6.0). Section was blocked with 10% normal goat serum 30min at RT. Then primary antibody (1% BSA) was incubated at 4°C overnight. The primary is detected by a Goat anti-rabbit IgG polymer labeled by HRP and visualized using 0.05% DAB.

### Specification

#### Product Description

Rabbit recombinant monoclonal antibody raised against human SOX2.

Antibody Species	Rabbit
Immunogen	Original antibody is raised against a synthetic peptide corresponding to human SOX2.
Theoretical MW (kDa)	Calculated MW: 35
Reactivity	Human, Mouse, Rat
Form	Liquid
Purification	Affinity chromatography purification
Isotype	IgG
Recommend Usage	ELISA Immunohistochemistry (1:50-1:200) Western Blot (1:500-1:5000) The optimal working dilution should be determined by the end user.
Storage Buffer	In PBS, pH7.4 (150 mM NaCl, 0.02% sodium azide and 50% glycerol)
Storage Instruction	Store at -20°C or -80°C. Aliquot to avoid repeated freezing and thawing.
Note	This product contains sodium azide: a POISONOUS AND HAZARDOUS SUBSTANCE which should be handled by trained staff only.

## Applications

- Western Blot

Western blot analysis of U-251 whole cell lysate, MCF-7 whole cell lysate, Mouse Brain whole cell lysate, Rat Brain whole cell lysate with SOX2 recombinant monoclonal antibody, clone 2E1 (Cat # RAB07426).

- Immunohistochemistry (Formalin/PFA-fixed paraffin-embedded sections)

Immunohistochemical analysis of paraffin-embedded human brain tissue using SOX2 recombinant monoclonal antibody, clone 2E1 (Cat # RAB07426) on a Leica Bond<sup>TM</sup> system. After dewaxing and hydration, antigen retrieval was mediated by high pressure in a citrate buffer (pH 6.0). Section was blocked with 10% normal goat serum 30min at RT. Then primary antibody (1% BSA) was incubated at 4°C overnight. The primary is detected by a Goat anti-rabbit IgG polymer labeled by HRP and visualized using 0.05% DAB.

- Enzyme-linked Immunoabsorbent Assay

## Gene Info — SOX2

Entrez GeneID

[6657](#)

Protein Accession#	<a href="#">P48431</a>
Gene Name	SOX2
Gene Alias	ANOP3, MCOPS3, MGC2413
Gene Description	SRY (sex determining region Y)-box 2
Omim ID	<a href="#">184429 206900</a>
Gene Ontology	<a href="#">Hyperlink</a>
Gene Summary	<p>This intronless gene encodes a member of the SRY-related HMG-box (SOX) family of transcription factors involved in the regulation of embryonic development and in the determination of cell fate. The product of this gene is required for stem-cell maintenance in the central nervous system, and also regulates gene expression in the stomach. Mutations in this gene have been associated with optic nerve hypoplasia and with syndromic microphthalmia, a severe form of structural eye malformation. This gene lies within an intron of another gene called SOX2 overlapping transcript (SOX2 OT). [provided by RefSeq]</p>
Other Designations	SRY-related HMG-box gene 2 sex-determining region Y-box 2 transcription factor SOX2

## Disease

- [Anophthalmos](#)
- [Coloboma](#)
- [Diabetes Mellitus](#)
- [Diabetic Nephropathies](#)
- [Genetic Predisposition to Disease](#)
- [Kidney Failure](#)
- [Microphthalmos](#)
- [Myopia](#)