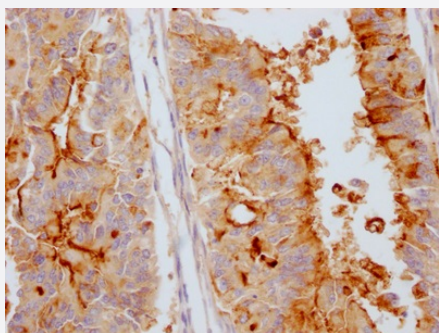


RecomAb™

MUC16 recombinant monoclonal antibody, clone 10F10

Catalog # RAB07411 Size 100 uL

Applications



Immunohistochemistry (Formalin/PFA-fixed paraffin-embedded sections)

Immunohistochemical analysis of paraffin-embedded human endometrial cancer using MUC16 recombinant monoclonal antibody, clone 10F10 (Cat # RAB07411) on a Leica Bond™ system. After dewaxing and hydration, antigen retrieval was mediated by high pressure in a citrate buffer (pH 6.0). Section was blocked with 10% normal goat serum 30min at RT. Then primary antibody (1% BSA) was incubated at 4°C overnight. The primary is detected by a Goat anti-rabbit IgG polymer labeled by HRP and visualized using 0.05% DAB.

Specification

Product Description	Rabbit recombinant monoclonal antibody raised against human MUC16.
Antibody Species	Rabbit
Immunogen	Original antibody is raised against a synthetic peptide corresponding to human MUC16.
Reactivity	Human
Form	Liquid
Purification	Affinity chromatography purification
Isotype	IgG
Recommend Usage	ELISA Immunohistochemistry (1:50-1:200) The optimal working dilution should be determined by the end user.
Storage Buffer	In PBS, pH7.4 (150 mM NaCl, 0.02% sodium azide and 50% glycerol)

Storage Instruction

Store at -20°C or -80°C.
Aliquot to avoid repeated freezing and thawing.

Note

This product contains sodium azide: a POISONOUS AND HAZARDOUS SUBSTANCE which should be handled by trained staff only.

Applications

- Immunohistochemistry (Formalin/PFA-fixed paraffin-embedded sections)

Immunohistochemical analysis of paraffin-embedded human endometrial cancer using MUC16 recombinant monoclonal antibody, clone 10F10 (Cat # RAB07411) on a Leica BondTM system. After dewaxing and hydration, antigen retrieval was mediated by high pressure in a citrate buffer (pH 6.0). Section was blocked with 10% normal goat serum 30min at RT. Then primary antibody (1% BSA) was incubated at 4°C overnight. The primary is detected by a Goat anti-rabbit IgG polymer labeled by HRP and visualized using 0.05% DAB.

- Enzyme-linked Immunoabsorbent Assay

Gene Info — MUC16

Entrez GeneID [94025](#)

Protein Accession# [Q8WXI7](#)

Gene Name MUC16

Gene Alias CA125, FLJ14303

Gene Description mucin 16, cell surface associated

Omim ID [606154](#)

Gene Ontology [Hyperlink](#)

Gene Summary O

Other Designations CA125 ovarian cancer antigen|mucin 16

Disease

- [Genetic Predisposition to Disease](#)

- [Neoplasms](#)

- [Ovarian cancer](#)
- [Ovarian Neoplasms](#)