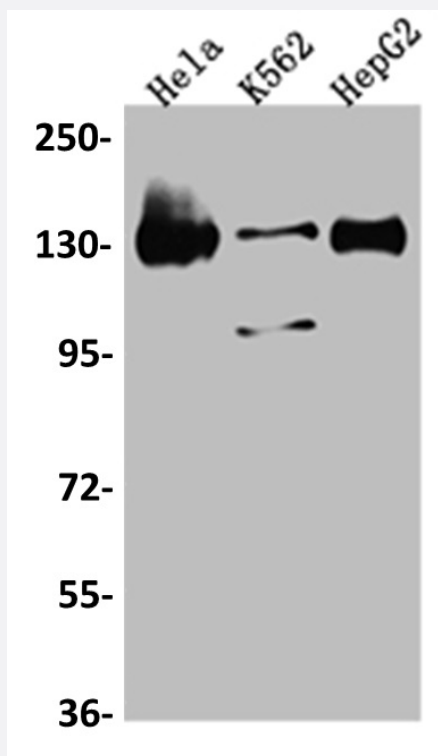


RecomAb™

# BUB1 recombinant monoclonal antibody, clone 9C11

Catalog # RAB07400      Size 100 uL

## Applications



### Western Blot (Cell lysate)

Western blot analysis of HeLa whole cell lysate, K562 whole cell lysate, HepG2 whole cell lysate with BUB1 recombinant monoclonal antibody, clone 9C11 (Cat # RAB07400).

## Specification

Product Description	Rabbit recombinant monoclonal antibody raised against human BUB1.
Antibody Species	Rabbit
Immunogen	Original antibody is raised against a synthetic peptide corresponding to human BUB1.
Theoretical MW (kDa)	Calculated MW: 123,
Reactivity	Human

Form	Liquid
Purification	Affinity chromatography purification
Isotype	IgG
Recommend Usage	ELISA Western Blot (1:500-1:5000) The optimal working dilution should be determined by the end user.
Storage Buffer	In PBS, pH7.4 (150 mM NaCl, 0.02% sodium azide and 50% glycerol)
Storage Instruction	Store at -20°C or -80°C. Aliquot to avoid repeated freezing and thawing.
Note	This product contains sodium azide: a POISONOUS AND HAZARDOUS SUBSTANCE which should be handled by trained staff only.

## Applications

- Western Blot (Cell lysate)

Western blot analysis of Hela whole cell lysate, K562 whole cell lysate, HepG2 whole cell lysate with BUB1 recombinant monoclonal antibody, clone 9C11 (Cat # RAB07400).

- Enzyme-linked Immunoabsorbent Assay

## Gene Info — BUB1

Entrez GeneID	<a href="#">699</a>
Protein Accession#	<a href="#">O43683</a>
Gene Name	BUB1
Gene Alias	BUB1A, BUB1L, hBUB1
Gene Description	budding uninhibited by benzimidazoles 1 homolog (yeast)
Omim ID	<a href="#">602452</a>
Gene Ontology	<a href="#">Hyperlink</a>
Gene Summary	This gene encodes a kinase involved in spindle checkpoint function. The kinase functions in part by phosphorylating a member of the mitotic checkpoint complex and activating the spindle checkpoint. Mutations in this gene have been associated with aneuploidy and several forms of cancer. [provided by RefSeq]

**Other Designations**

BUB1 budding uninhibited by benzimidazoles 1 homolog|budding uninhibited by benzimidazoles 1|mitotic spindle checkpoint kinase|putative serine/threonine-protein kinase

**Pathway**

- [Cell cycle](#)

**Disease**

- [Alcoholism](#)
- [Breast cancer](#)
- [Breast Neoplasms](#)
- [Carcinoma](#)
- [Conduct Disorder](#)
- [Genetic Predisposition to Disease](#)
- [Ovarian Neoplasms](#)