

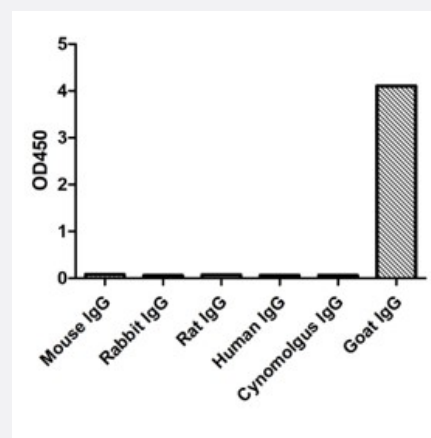
NanoAb™

RecomAb™

# Goat IgG Fc Gamma fragment VHH recombinant monoclonal antibody (HRP)

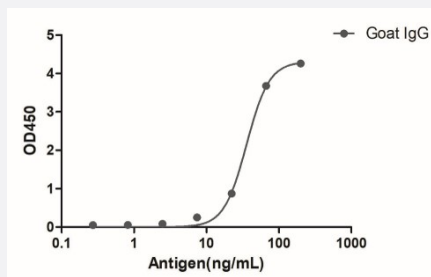
Catalog # RAB07254      Size 100 ug

## Applications



### Enzyme-linked Immunoabsorbent Assay

ELISA of specificity for different species of IgG. The plate was coated with 2ug/ml of different IgG. Goat VHH IgG Fc Gamma recombinant monoclonal antibody (HRP) (Cat # RAB07254) was used as the detection antibody at 1:1000.



### Enzyme-linked Immunoabsorbent Assay

A titer ELISA of Goat IgG. The plate was coated with different amounts of Goat IgG. Goat VHH IgG Fc Gamma recombinant monoclonal antibody (HRP) (Cat # RAB07254) was used as the detection antibody at 1:5000.

## Specification

<b>Product Description</b>	Alpaca VHH recombinant monoclonal antibody raised against goat IgG Fc gamma fragment. The antibody is conjugated with horseradish peroxidase.
<b>Antibody Species</b>	Alpaca
<b>Immunogen</b>	Recombinant Fc region of goat IgG

<b>Reactivity</b>	Goat
<b>Specificity</b>	Goat IgG Fc region
<b>Form</b>	Liquid
<b>Conjugation</b>	HRP
<b>Purification</b>	Protein A
<b>Isotype</b>	Alpaca IgG2b/2c
<b>Recommend Usage</b>	ELISA (1:5000-1:20000) Western Blot (1:5000-1:20000) The optimal working dilution should be determined by the end user.
<b>Storage Buffer</b>	In 10 mM PBS, pH 7.5 (0.05% sucrose, 0.1% trehalose, 0.01% proclin 300, 50% glycerol)
<b>Storage Instruction</b>	Store at -20°C. Aliquot to avoid repeated freezing and thawing.

## Applications

- Western Blot

- Enzyme-linked Immunoabsorbent Assay

ELISA of specificity for different species of IgG. The plate was coated with 2ug/ml of different IgG. Goat VHH IgG Fc Gamma recombinant monoclonal antibody (HRP) (Cat # RAB07254) was used as the detection antibody at 1:1000.

- Enzyme-linked Immunoabsorbent Assay

A titer ELISA of Goat IgG. The plate was coated with different amounts of Goat IgG. Goat VHH IgG Fc Gamma recombinant monoclonal antibody (HRP) (Cat # RAB07254) was used as the detection antibody at 1:5000.