

NanoAb™

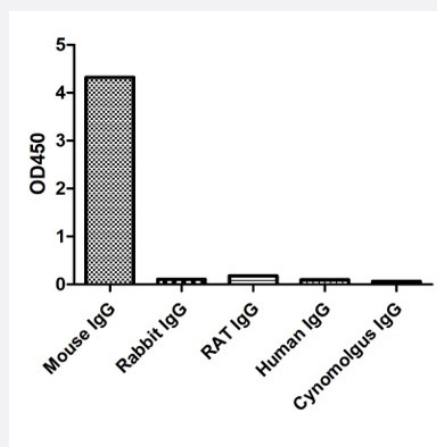
RecomAb™

# Mouse IgG3 Fc Gamma fragment VHH recombinant monoclonal antibody

Catalog # RAB07144

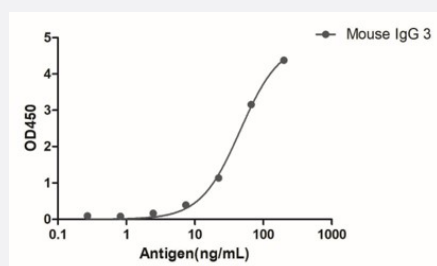
Size 100 ug

## Applications



### Enzyme-linked Immunoabsorbent Assay

ELISA of specificity for different species of IgG. The plate was coated with 2ug/ml of different IgG. Mouse VHH IgG3 Fc Gamma Goat IgG Fc fusion recombinant monoclonal antibody (Cat # RAB07144) was used as the primary antibody at 1:1000 and Goat VHH IgG Fc Gamma Rabbit IgG Fc fusion recombinant monoclonal antibody (HRP) (Cat # RAB07260) as the secondary antibody.



### Enzyme-linked Immunoabsorbent Assay

A titer ELISA of mouse IgG3. The plate was coated with different amounts of mouse IgG3. Mouse VHH IgG3 Fc Gamma Goat IgG Fc fusion recombinant monoclonal antibody (Cat # RAB07144) was used as the primary antibody at 1:10000 and Goat VHH IgG Fc Gamma Rabbit IgG Fc fusion recombinant monoclonal antibody (HRP) (Cat # RAB07260) as the secondary antibody.

## Specification

Product Description	Alpaca VHH recombinant monoclonal antibody raised against mouse IgG3.
Antibody Species	Alpaca
Immunogen	Recombinant Fc region of mouse IgG3
Reactivity	Mouse

Specificity	Mouse IgG3 (Fcγ fragment specific)
Form	Liquid
Conjugation	Unconjugated
Purification	Protein A
Isotype	Goat IgG Fc
Recommend Usage	ELISA (1:5000-1:20000) Western Blot (1:5000-1:20000) The optimal working dilution should be determined by the end user.
Storage Buffer	In 10 mM PBS, pH 7.5 (0.05% sucrose, 0.1% trehalose, 0.01% proclin 300, 50% glycerol)
Storage Instruction	Store at -20°C. Aliquot to avoid repeated freezing and thawing.

## Applications

- Western Blot

- Enzyme-linked Immunoabsorbent Assay

ELISA of specificity for different species of IgG. The plate was coated with 2ug/ml of different IgG. Mouse VHH IgG3 Fc Gamma Goat IgG Fc fusion recombinant monoclonal antibody (Cat # RAB07144) was used as the primary antibody at 1:1000 and Goat VHH IgG Fc Gamma Rabbit IgG Fc fusion recombinant monoclonal antibody (HRP) (Cat # RAB07260) as the secondary antibody.

- Enzyme-linked Immunoabsorbent Assay

A titer ELISA of mouse IgG3. The plate was coated with different amounts of mouse IgG3. Mouse VHH IgG3 Fc Gamma Goat IgG Fc fusion recombinant monoclonal antibody (Cat # RAB07144) was used as the primary antibody at 1:10000 and Goat VHH IgG Fc Gamma Rabbit IgG Fc fusion recombinant monoclonal antibody (HRP) (Cat # RAB07260) as the secondary antibody.