

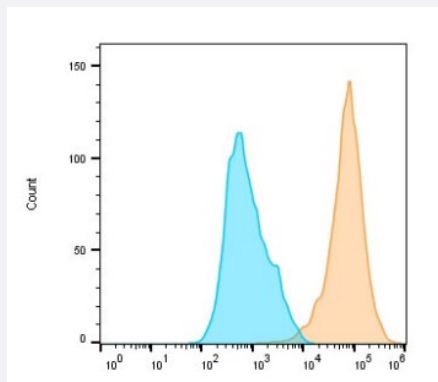
NanoAb™

RecomAb™

BAFFR VHH recombinant monoclonal antibody

Catalog # RAB06820 Size 100 ug

Applications



Flow Cytometry

Flow cytometric analysis of BAFFR-overexpressed HEK-293T (human epithelial cell line from embryonic kidney transformed with large T antigen) labeling BAFFR with BAFFR VHH recombinant monoclonal antibody (Cat # RAB06820) at 1:10000 dilution (yellow) compared with Human IgG1-Isotype control (green).

Specification

Product Description Alpaca VHH recombinant monoclonal antibody raised against human BAFFR.

Antibody Species Alpaca

Immunogen Human BAFFR recombinant protein

Reactivity Crab-eating macaque, Human

Form Liquid

Conjugation Unconjugated

Purification Protein A

Isotype Human IgG1 Fc (mutation)

Recommend Usage
 ELISA (1:4000-1:10000)
 Flow Cytometry (1:200-1:1000)
 The optimal working dilution should be determined by the end user.

Storage Buffer	In 10 mM PBS, pH 7.5 (0.05% sucrose, 0.1% trehalose, 0.01% proclin 300, 50% glycerol)
Storage Instruction	Store at -20°C. Aliquot to avoid repeated freezing and thawing.

Applications

- Enzyme-linked Immunoabsorbent Assay

- Flow Cytometry

Flow cytometric analysis of BAFFR-overexpressed HEK-293T (human epithelial cell line from embryonic kidney transformed with large T antigen) labeling BAFFR with BAFFR VHH recombinant monoclonal antibody (Cat # RAB06820) at 1:10000 dilution (yellow) compared with Human IgG1-Isotype control (green).