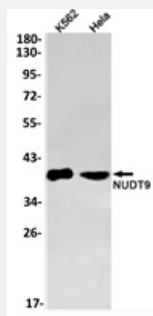


RecomAb™

NUDT9 recombinant monoclonal antibody, clone R07-9C3

Catalog # RAB04914 Size 100 uL

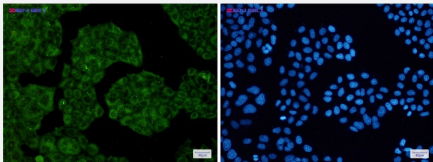
Applications



Western Blot (Cell lysate)

Western blot analysis of K562, HeLa lysates with NUDT9 recombinant monoclonal antibody, clone R07-9C3 (Cat # RAB04914).

Immunocytochemistry



Immunocytochemical staining of HeLa using NUDT9 recombinant monoclonal antibody, clone R07-9C3 (Cat # RAB04914)(green), and DAPI(blue).

Specification

Product Description	Rabbit recombinant monoclonal antibody raised against human NUDT9.
Antibody Species	Rabbit
Immunogen	Original antibody is raised against a synthetic peptide corresponding to human NUDT9.
Theoretical MW (kDa)	39
Reactivity	Human, Rat
Form	Liquid

Purification	Affinity purification
Isotype	IgG
Recommend Usage	Immunocytochemistry (1:50-1:200) Immunofluorescence (1:50-1:200) Western Blot (1:500-1:1000) The optimal working dilution should be determined by the end user.
Storage Buffer	In 50 mM Tris-Glycine, pH 7.4 (0.15M NaCl, 40% Glycerol, 0.01% Sodium azide and 0.05% BSA)
Storage Instruction	Store at 4°C. For long term storage store at -20°C. Aliquot to avoid repeated freezing and thawing.
Note	This product contains sodium azide: a POISONOUS AND HAZARDOUS SUBSTANCE which should be handled by trained staff only.

Applications

- Western Blot (Cell lysate)

Western blot analysis of K562, Hela lysates with NUDT9 recombinant monoclonal antibody, clone R07-9C3 (Cat # RAB04914).

- Immunocytochemistry

Immunocytochemical staining of Hela using NUDT9 recombinant monoclonal antibody, clone R07-9C3 (Cat # RAB04914) (green), and DAPI(blue).

- Immunofluorescence

Gene Info — NUDT9

Entrez GeneID	53343
Protein Accession#	Q9BW91
Gene Name	NUDT9
Gene Alias	MGC3037, NUDT10
Gene Description	nudix (nucleoside diphosphate linked moiety X)-type motif 9
Omim ID	606022
Gene Ontology	Hyperlink

Other Designations

ADP-ribose pyrophosphatase NUDT9|nucleoside diphosphate linked moiety X-type motif 9|nudi
x-type motif 9

Pathway

- [Purine metabolism](#)