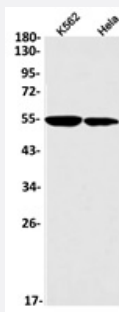


RecomAb™

KATNA1 recombinant monoclonal antibody, clone R05-3B9

Catalog # RAB04904 Size 100 uL

Applications



Western Blot (Cell lysate)

Western blot analysis of K562, HeLa lysates with KATNA1 recombinant monoclonal antibody, clone R05-3B9 (Cat # RAB04904).

Specification

Product Description	Rabbit recombinant monoclonal antibody raised against human KATNA1.
Antibody Species	Rabbit
Immunogen	Original antibody is raised against a synthetic peptide corresponding to human KATNA1.
Theoretical MW (kDa)	56
Reactivity	Human
Form	Liquid
Purification	Affinity purification
Isotype	IgG
Recommend Usage	Western Blot (1:500-1:1000) The optimal working dilution should be determined by the end user.
Storage Buffer	In 50 mM Tris-Glycine, pH 7.4 (0.15M NaCl, 40% Glycerol, 0.01% Sodium azide and 0.05% BSA)

Storage Instruction

Store at 4°C. For long term storage store at -20°C.
Aliquot to avoid repeated freezing and thawing.

Note

This product contains sodium azide: a POISONOUS AND HAZARDOUS SUBSTANCE which should be handled by trained staff only.

Applications

- Western Blot (Cell lysate)

Western blot analysis of K562, Hela lysates with KATNA1 recombinant monoclonal antibody, clone R05-3B9 (Cat # RAB04904).

Gene Info — KATNA1

Entrez GeneID [11104](#)

Protein Accession# [O75449](#)

Gene Name KATNA1

Gene Alias -

Gene Description katanin p60 (ATPase-containing) subunit A 1

Omim ID [606696](#)

Gene Ontology [Hyperlink](#)

Gene Summary Microtubules, polymers of alpha and beta tubulin subunits, form the mitotic spindle of a dividing cell and help to organize membranous organelles during interphase. Katanin is a heterodimer that consists of a 60 kDa ATPase (p60 subunit A 1) and an 80 kDa accessory protein (p80 subunit B 1). The p60 subunit acts to sever and disassemble microtubules, while the p80 subunit targets the enzyme to the centrosome. This gene encodes the p80 subunit. This protein is a member of the AAA family of ATPases. [provided by RefSeq]

Other Designations OTTHUMP00000017392|katanin p60 subunit A 1