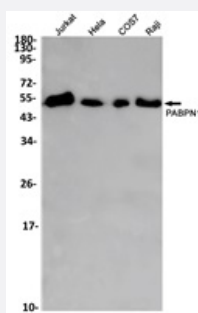


RecomAb™

# PABPN1 recombinant monoclonal antibody, clone R02-8B1

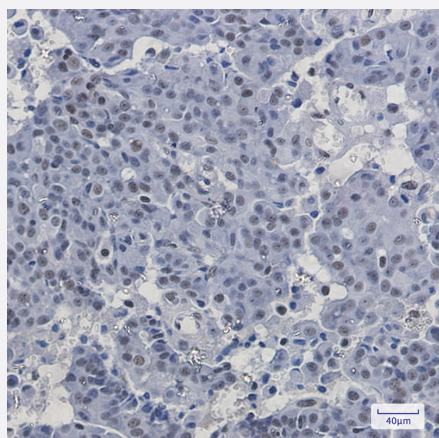
Catalog # RAB04903      Size 100 uL

## Applications



### Western Blot (Cell lysate)

Western blot analysis of Jurkat, Hela, COS7, Raji lysates with PABPN1 recombinant monoclonal antibody, clone R02-8B1 (Cat # RAB04903).



### Immunohistochemistry (Formalin/PFA-fixed paraffin-embedded sections)

Immunohistochemistry analysis of paraffin-embedded human breast cancer using PABPN1 recombinant monoclonal antibody, clone R02-8B1 (Cat # RAB04903). High-pressure and temperature Sodium Citrate pH 6.0 was used for antigen retrieval.

## Specification

Product Description	Rabbit recombinant monoclonal antibody raised against human PABPN1.
Antibody Species	Rabbit
Immunogen	Original antibody is raised against a synthetic peptide corresponding to human PABPN1.
Theoretical MW (kDa)	Calculated MW: 33 kD
Reactivity	Human, Mouse

Form	Liquid
Purification	Affinity purification
Isotype	IgG
Recommend Usage	Immunocytochemistry (1:50-1:200) Immunofluorescence (1:50-1:200) Immunohistochemistry (Formalin/PFA-fixed paraffin-embedded sections) (1:50-1:100) Immunohistochemistry (Frozen sections) (1:50-1:100) Immunoprecipitation(1:20) Western Blot (1:500-1:1000) The optimal working dilution should be determined by the end user.
Storage Buffer	In 50 mM Tris-Glycine, pH 7.4 (0.15M NaCl, 40% Glycerol, 0.01% Sodium azide and 0.05% BSA)
Storage Instruction	Store at 4°C. For long term storage store at -20°C. Aliquot to avoid repeated freezing and thawing.
Note	This product contains sodium azide: a POISONOUS AND HAZARDOUS SUBSTANCE which should be handled by trained staff only.

## Applications

- Western Blot (Cell lysate)

Western blot analysis of Jurkat, Hela, COS7, Raji lysates with PABPN1 recombinant monoclonal antibody, clone R02-8B1 (Cat # RAB04903).

- Immunohistochemistry (Formalin/PFA-fixed paraffin-embedded sections)

Immunohistochemistry analysis of paraffin-embedded human breast cancer using PABPN1 recombinant monoclonal antibody, clone R02-8B1 (Cat # RAB04903). High-pressure and temperature Sodium Citrate pH 6.0 was used for antigen retrieval.

- Immunohistochemistry (Frozen sections)

- Immunocytochemistry

- Immunofluorescence

- Immunoprecipitation

## Gene Info — PABPN1

Entrez GeneID

[8106](#)

Protein Accession#	<a href="#">Q86U42</a>
Gene Name	PABPN1
Gene Alias	OPMD, PAB2, PABP2
Gene Description	poly(A) binding protein, nuclear 1
Omim ID	<a href="#">164300 602279</a>
Gene Ontology	<a href="#">Hyperlink</a>
Gene Summary	<p>This gene encodes an abundant nuclear protein that binds with high affinity to nascent poly(A) tails . The protein is required for progressive and efficient polymerization of poly(A) tails on the 3' ends of eukaryotic genes and controls the size of the poly(A) tail to about 250 nt. At steady-state, this protein is localized in the nucleus whereas a different poly(A) binding protein is localized in the cytoplasm. An expansion of the trinucleotide (GCG) repeat from normal 6 to 8-13 at the 5' end of the coding region of this gene leads to autosomal dominant oculopharyngeal muscular dystrophy (OPMD) disease. Multiple splice variants have been described but their full-length nature is not known . One splice variant includes introns 1 and 6 but no protein is formed. [provided by RefSeq</p>
Other Designations	poly(A) binding protein 2 poly(A) binding protein II

## Disease

- [Genetic Predisposition to Disease](#)
- [Hematologic Diseases](#)
- [Muscular Dystrophies](#)
- [Occupational Diseases](#)