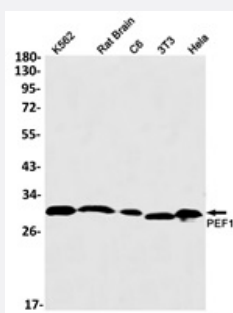


RecomAb™

PEF1 recombinant monoclonal antibody, clone R09-7F3

Catalog # RAB04888 Size 100 uL

Applications



Western Blot

Western blot analysis of K562, rat brain, C6, 3T3, HeLa lysates with PEF1 recombinant monoclonal antibody, clone R09-7F3 (Cat # RAB04888).

Specification

Product Description	Rabbit recombinant monoclonal antibody raised against human PEF1.
Antibody Species	Rabbit
Immunogen	Original antibody is raised against a synthetic peptide corresponding to human PEF1.
Theoretical MW (kDa)	30
Reactivity	Human, Mouse, Rat
Form	Liquid
Purification	Affinity purification
Isotype	IgG
Recommend Usage	Immunoprecipitation(1:20) Western Blot (1:500-1:1000) The optimal working dilution should be determined by the end user.
Storage Buffer	In 50 mM Tris-Glycine, pH 7.4 (0.15M NaCl, 40% Glycerol, 0.01% Sodium azide and 0.05% BSA)

Storage Instruction

Store at 4°C. For long term storage store at -20°C.
Aliquot to avoid repeated freezing and thawing.

Note

This product contains sodium azide: a POISONOUS AND HAZARDOUS SUBSTANCE which should be handled by trained staff only.

Applications

- Western Blot

Western blot analysis of K562, rat brain, C6, 3T3, Hela lysates with PEF1 recombinant monoclonal antibody, clone R09-7F3 (Cat # RAB04888).

- Immunoprecipitation

Gene Info — PEF1

Entrez GeneID[553115](#)**Protein Accession#**[Q9UBV8](#)**Gene Name**

PEF1

Gene Alias

PEF1A, PEFLIN

Gene Description

penta-EF-hand domain containing 1

Omim ID[610033](#)**Gene Ontology**[Hyperlink](#)**Gene Summary**

PEF1 is a Ca(2+)-binding protein that belongs to the penta-EF-hand (PEF) protein family, which includes the calpain small subunit (CAPNS1; MIM 114170), sorcin (SRI; MIM 182520), grancalcin (GCA; MIM 607030), and ALG2 (PDCD6; MIM 601057) (Kitaura et al., 2001 [PubMed 11278427]).[supplied by OMIM]

Other Designations

OTTHUMP00000003953|PEF protein with a long N-terminal hydrophobic domain|penta-EF hand domain containing 1