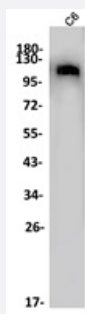


RecomAb™

PKN1 recombinant monoclonal antibody, clone R09-214

Catalog # RAB04872 Size 100 uL

Applications



Western Blot (Cell lysate)

Specification

Product Description	Rabbit recombinant monoclonal antibody raised against human PKN1.
Antibody Species	Rabbit
Immunogen	Original antibody is raised against a synthetic peptide corresponding to human PKN1.
Theoretical MW (kDa)	Calculated MW: 104 k
Reactivity	Rat
Form	Liquid
Purification	Affinity chromatography
Isotype	IgG
Recommend Usage	Western Blot (1:500-1:1000) The optimal working dilution should be determined by the end user.
Storage Instruction	Store at 4°C. For long term storage store at -20°C. Aliquot to avoid repeated freezing and thawing.

Applications

- Western Blot (Cell lysate)

Gene Info — PKN1

Entrez GeneID [5585](#)

Protein Accession# [Q16512](#)

Gene Name PKN1

Gene Alias DBK, MGC46204, PAK1, PKN, PKN-ALPHA, PRK1, PRKCL1

Gene Description protein kinase N1

Omim ID [601032](#)

Gene Ontology [Hyperlink](#)

Gene Summary The protein encoded by this gene belongs to the protein kinase C superfamily. This kinase is activated by Rho family of small G proteins and may mediate the Rho-dependent signaling pathway. This kinase can be activated by phospholipids and by limited proteolysis. The 3-phosphoinositide dependent protein kinase-1 (PDPK1/PDK1) is reported to phosphorylate this kinase, which may mediate insulin signals to the actin cytoskeleton. The proteolytic activation of this kinase by caspase-3 or related proteases during apoptosis suggests its role in signal transduction related to apoptosis. Alternatively spliced transcript variants encoding distinct isoforms have been observed. [provided by RefSeq]

Other Designations protein kinase C-like 1|protein kinase C-like PKN|protein kinase C-related kinase 1|serine-threonine kinase N|serine/threonine protein kinase N

Disease

- [Cardiovascular Diseases](#)
- [Diabetes Mellitus](#)
- [Edema](#)