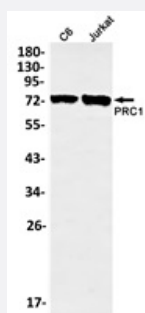


RecomAb™

PRC1 recombinant monoclonal antibody, clone R04-3G7

Catalog # RAB04858 Size 100 uL

Applications



Western Blot (Cell lysate)

Specification

Product Description	Rabbit recombinant monoclonal antibody raised against human PRC1.
Antibody Species	Rabbit
Immunogen	Original antibody is raised against a synthetic peptide corresponding to human PRC1.
Theoretical MW (kDa)	72
Reactivity	Human, Rat
Form	Liquid
Purification	Affinity chromatography
Isotype	IgG
Recommend Usage	Immunohistochemistry (Formalin/PFA-fixed paraffin-embedded sections) (1:50-1:100) Immunoprecipitation(1:20) Western Blot (1:500-1:1000) The optimal working dilution should be determined by the end user.

Storage Instruction

Store at 4°C. For long term storage store at -20°C.
Aliquot to avoid repeated freezing and thawing.

Applications

- Western Blot (Cell lysate)
- Immunohistochemistry (Formalin/PFA-fixed paraffin-embedded sections)
- Immunoprecipitation

Gene Info — PRC1

Entrez GeneID [9055](#)

Protein Accession# [O43663](#)

Gene Name PRC1

Gene Alias ASE1, MGC1671, MGC3669

Gene Description protein regulator of cytokinesis 1

Omim ID [603484](#)

Gene Ontology [Hyperlink](#)

Gene Summary This gene encodes a protein that is involved in cytokinesis. The encoded protein is at high level during S and G2/M and drop dramatically after cell exit mitosis and enter G1. It is located in the nucleus during interphase, and becomes associated with mitotic spindles in a highly dynamic manner during mitosis, and localizes to the cell mid-body during cytokinesis. This protein has been shown to be a substrate of several cyclin-dependent kinases (CDKs). At least three alternatively spliced transcript variants encoding distinct isoforms have been observed. [provided by RefSeq]

Other Designations anaphase spindle elongation 1 homolog|protein regulating cytokinesis 1

Disease

- [Adenocarcinoma](#)
- [Genetic Predisposition to Disease](#)
- [Hypertension](#)

- [Pancreatic Neoplasms](#)
- [Tobacco Use Disorder](#)