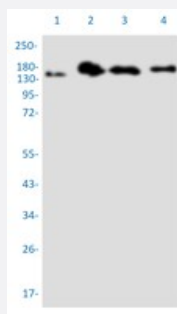


RecomAb™

PELP1 recombinant monoclonal antibody, clone R06-4A4

Catalog # RAB04476 Size 100 uL

Applications



Western Blot

Western blot analysis of Lane 1: HeLa whole cell lysate, Lane 2: A549 whole cell lysate, Lane 3: MCF-7 whole cell lysate and Lane 4: 293T whole cell lysate with PELP1 recombinant monoclonal antibody, clone R06-4A4 (Cat # RAB04476).

Immunohistochemistry (Formalin/PFA-fixed paraffin-embedded sections)

Immunohistochemical staining of human breast cancer with PELP1 recombinant monoclonal antibody, clone R06-4A4 (Cat # RAB04476).

Specification

Product Description	Rabbit recombinant monoclonal antibody raised against human PELP1.
Antibody Species	Rabbit
Immunogen	Original antibody is raised against a synthetic peptide corresponding to human PELP1.
Theoretical MW (kDa)	Calculated MW: 120 k
Reactivity	Human
Form	Liquid

Purification	Affinity chromatography
Isotype	IgG
Recommend Usage	Immunocytochemistry Immunofluorescence (1:50-1:200) Immunohistochemistry (1:50-1:100) Western Blot (1:500-1:1000) The optimal working dilution should be determined by the end user.
Storage Buffer	In 50mM Tris-Glycine, 150mM NaCl, pH 7.4 (40% glycerol, 0.05% BSA and 0.01% Sodium azide)
Storage Instruction	Store at 4°C. For long term storage store at -20°C. Aliquot to avoid repeated freezing and thawing.
Note	This product contains sodium azide: a POISONOUS AND HAZARDOUS SUBSTANCE which should be handled by trained staff only.

Applications

- Western Blot

Western blot analysis of Lane 1: HeLa whole cell lysate, Lane 2: A549 whole cell lysate, Lane 3: MCF-7 whole cell lysate and Lane 4: 293T whole cell lysate with PELP1 recombinant monoclonal antibody, clone R06-4A4 (Cat # RAB04476).

- Immunohistochemistry (Formalin/PFA-fixed paraffin-embedded sections)

Immunohistochemical staining of human breast cancer with PELP1 recombinant monoclonal antibody, clone R06-4A4 (Cat # RAB04476).

- Immunocytochemistry

- Immunofluorescence

Gene Info — PELP1

Entrez GeneID	27043
Protein Accession#	Q8IZL8
Gene Name	PELP1
Gene Alias	HMX3, MNAR, P160
Gene Description	proline, glutamate and leucine rich protein 1

Omim ID	609455
Gene Ontology	Hyperlink
Gene Summary	PELP1 is a coactivator of estrogen receptor (see ESR1; MIM 133430)-mediated transcription and a corepressor of other nuclear hormone receptors and sequence-specific transcription factors (Choi et al., 2004 [PubMed 15456770]).[supplied by OMIM]
Other Designations	modulator of nongenomic activity of estrogen receptor proline and glutamic acid rich nuclear protein proline, glutamic acid and leucine rich protein 1 proline-, glutamic acid-, leucine-rich protein 1 transcription factor HMX3

Disease

- [Breast cancer](#)
- [Breast Neoplasms](#)
- [Genetic Predisposition to Disease](#)