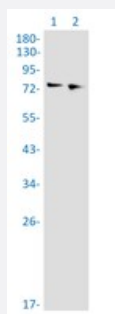


RecomAb™

CUX1 recombinant monoclonal antibody, clone R03-5F8

Catalog # RAB04462 Size 100 uL

Applications



Western Blot

Western blot analysis of Lane 1: 3T3 whole cell lysate and Lane 2: Raw 264.7 whole cell lysate with CUX1 recombinant monoclonal antibody, clone R03-5F8 (Cat # RAB04462).

Immunocytochemistry

Immunocytochemistry staining of A549 cells with CUX1 recombinant monoclonal antibody, clone R03-5F8 (Cat # RAB04462) (green). DAPI was stained the cell nucleus (blue).

Specification

Product Description	Rabbit recombinant monoclonal antibody raised against human CUX1.
Antibody Species	Rabbit
Immunogen	Original antibody is raised against recombinant protein corresponding to human CUX1.
Theoretical MW (kDa)	Calculated MW: 77 kD
Reactivity	Human, Mouse, Rat
Form	Liquid

Purification	Affinity chromatography
Isotype	IgG
Recommend Usage	Immunocytochemistry Immunofluorescence (1:50-1:200) Immunoprecipitation (1:20) Western Blot (1:500-1:1000) The optimal working dilution should be determined by the end user.
Storage Buffer	In 50mM Tris-Glycine, 150mM NaCl, pH 7.4 (40% glycerol, 0.05% BSA and 0.01% Sodium azide)
Storage Instruction	Store at 4°C. For long term storage store at -20°C. Aliquot to avoid repeated freezing and thawing.
Note	This product contains sodium azide: a POISONOUS AND HAZARDOUS SUBSTANCE which should be handled by trained staff only.

Applications

- Western Blot

Western blot analysis of Lane 1: 3T3 whole cell lysate and Lane 2: Raw 264.7 whole cell lysate with CUX1 recombinant monoclonal antibody, clone R03-5F8 (Cat # RAB04462).

- Immunocytochemistry

Immunocytochemistry staining of A549 cells with CUX1 recombinant monoclonal antibody, clone R03-5F8 (Cat # RAB04462) (green). DAPI was stained the cell nucleus (blue).

- Immunofluorescence

- Immunoprecipitation

Gene Info — CUX1

Entrez GeneID	1523
Protein Accession#	Q13948
Gene Name	CUX1
Gene Alias	CASP, CDP, CDP/Cut, CDP1, COY1, CUTL1, CUX, Clox, Cux/CDP, GOLIM6, Nbla10317, p100, p110, p200, p75
Gene Description	cut-like homeobox 1

Omim ID [116896](#)

Gene Ontology [Hyperlink](#)

Gene Summary The protein encoded by this gene is a member of the homeodomain family of DNA binding proteins. It may regulate gene expression, morphogenesis, and differentiation and it may also play a role in the cell cycle progression. Several alternatively spliced transcript variants of this gene have been described, but the full-length nature of some of these variants has not been determined. [provided by RefSeq]

Other Designations cut homeobox|cut homolog|cut-like 1, CCAAT displacement protein|golgi integral membrane protein 6|putative protein product of Nbla10317

Disease

- [Tobacco Use Disorder](#)