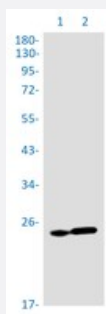


RecomAb™

# RPS8 recombinant monoclonal antibody, clone R05-5I8

Catalog # RAB04447      Size 100 uL

## Applications



### Western Blot

Western blot analysis of Lane 1: Raw 264.7 whole cell lysate and Lane 2: PC-12 whole cell lysate with RPS8 recombinant monoclonal antibody, clone R05-5I8 (Cat # RAB04447).

## Specification

<b>Product Description</b>	Rabbit recombinant monoclonal antibody raised against human RPS8.
<b>Antibody Species</b>	Rabbit
<b>Immunogen</b>	Original antibody is raised against recombinant protein corresponding to human RPS8.
<b>Theoretical MW (kDa)</b>	Calculated MW: 24 kD
<b>Reactivity</b>	Hamster, Human, Mouse, Rat
<b>Form</b>	Liquid
<b>Purification</b>	Affinity chromatography
<b>Isotype</b>	IgG
<b>Recommend Usage</b>	Immunocytochemistry Immunofluorescence (1:50-1:200) Immunoprecipitation (1:20) Western Blot (1:500-1:1000) The optimal working dilution should be determined by the end user.

Storage Buffer	In 50mM Tris-Glycine, 150mM NaCl, pH 7.4 (40% glycerol, 0.05% BSA and 0.01% Sodium azide)
Storage Instruction	Store at 4°C. For long term storage store at -20°C. Aliquot to avoid repeated freezing and thawing.
Note	This product contains sodium azide: a POISONOUS AND HAZARDOUS SUBSTANCE which should be handled by trained staff only.

## Applications

- Western Blot

Western blot analysis of Lane 1: Raw 264.7 whole cell lysate and Lane 2: PC-12 whole cell lysate with RPS8 recombinant monoclonal antibody, clone R05-5I8 (Cat # RAB04447).

- Immunocytochemistry

- Immunofluorescence

- Immunoprecipitation

## Gene Info — RPS8

Entrez GeneID	<a href="#">6202</a>
---------------	----------------------

Protein Accession#	<a href="#">P62241</a>
--------------------	------------------------

Gene Name	RPS8
-----------	------

Gene Alias	-
------------	---

Gene Description	ribosomal protein S8
------------------	----------------------

Omim ID	<a href="#">600357</a>
---------	------------------------

Gene Ontology	<a href="#">Hyperlink</a>
---------------	---------------------------

Gene Summary	<p>Ribosomes, the organelles that catalyze protein synthesis, consist of a small 40S subunit and a large 60S subunit. Together these subunits are composed of 4 RNA species and approximately 80 structurally distinct proteins. This gene encodes a ribosomal protein that is a component of the 40 S subunit. The protein belongs to the S8E family of ribosomal proteins. It is located in the cytoplasm. Increased expression of this gene in colorectal tumors and colon polyps compared to matched normal colonic mucosa has been observed. This gene is co-transcribed with the small nucleolar RNA genes U38A, U38B, U39, and U40, which are located in its fourth, fifth, first, and second intron, respectively. As is typical for genes encoding ribosomal proteins, there are multiple processed pseudogenes of this gene dispersed through the genome. [provided by RefSeq]</p>
--------------	--

**Other Designations**

40S ribosomal protein S8|OK/SW-cl.83

**Pathway**

- [Ribosome](#)