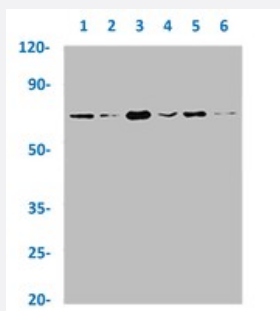


RecomAb™

ALAS1 recombinant monoclonal antibody, clone 2A9

Catalog # RAB04390 Size 100 uL

Applications



Western Blot

Western blot analysis of Lane 1: Hela whole cell lysate, Lane 2: HepG2 whole cell lysate, Lane 3: Raji whole cell lysate, Lane 4: PC3 whole cell lysate, Lane 5: A549 whole cell lysate and Lane 6: MCF-7 whole cell lysate with ALAS1 recombinant monoclonal antibody, clone 2A9 (Cat # RAB04390).

Specification

Product Description	Rabbit recombinant monoclonal antibody raised against human ALAS1.
Antibody Species	Rabbit
Immunogen	Original antibody is raised against a synthetic peptide corresponding to human ALAS1.
Theoretical MW (kDa)	Calculated MW: 71, 1
Reactivity	Human
Form	Liquid
Purification	Affinity chromatography
Isotype	IgG
Recommend Usage	ELISA Western Blot (1:500-1:5000) The optimal working dilution should be determined by the end user.
Storage Buffer	In PBS, pH7.4 (150 mM NaCl, 50% glycerol and 0.02% sodium azide)

Storage Instruction

Store at -20°C or -80°C.
Aliquot to avoid repeated freezing and thawing.

Note

This product contains sodium azide: a POISONOUS AND HAZARDOUS SUBSTANCE which should be handled by trained staff only.

Applications

- Western Blot

Western blot analysis of Lane 1: Hela whole cell lysate, Lane 2: HepG2 whole cell lysate, Lane 3: Raji whole cell lysate, Lane 4: PC3 whole cell lysate, Lane 5: A549 whole cell lysate and Lane 6: MCF-7 whole cell lysate with ALAS1 recombinant monoclonal antibody, clone 2A9 (Cat # RAB04390).

- Enzyme-linked Immunoabsorbent Assay

Gene Info — ALAS1

Entrez GeneID[211](#)**Protein Accession#**[P13196](#)**Gene Name**

ALAS1

Gene Alias

ALAS, ALAS3, ALASH, MIG4

Gene Description

aminolevulinate, delta-, synthase 1

Omim ID[125290](#)**Gene Ontology**[Hyperlink](#)**Gene Summary**

Delta-aminolevulinate synthase (ALAS; EC 2.3.1.37) catalyzes the condensation of glycine with succinyl-CoA to form delta-aminolevulinic acid. This nuclear-encoded mitochondrial enzyme is the first and rate-limiting enzyme in the mammalian heme biosynthetic pathway. There are 2 tissue-specific isozymes: a housekeeping enzyme encoded by the ALAS1 gene and an erythroid tissue-specific enzyme encoded by ALAS2 (MIM 301300).[supplied by OMIM]

Other Designations

aminolevulinate, delta, synthase 1|migration-inducing protein 4

Pathway

- [Glycine](#)

- [Metabolic pathways](#)
- [Porphyrin and chlorophyll metabolism](#)

Disease

- [Cardiovascular Diseases](#)
- [Diabetes Mellitus](#)
- [Edema](#)