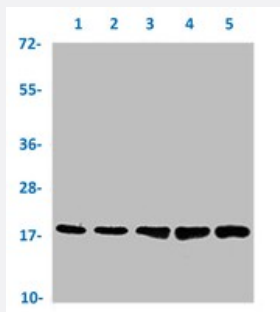


RecomAb™

TSPO recombinant monoclonal antibody, clone 23G2

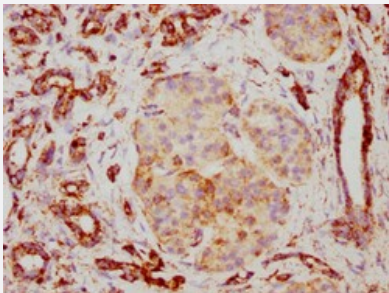
Catalog # RAB04341 Size 100 uL

Applications



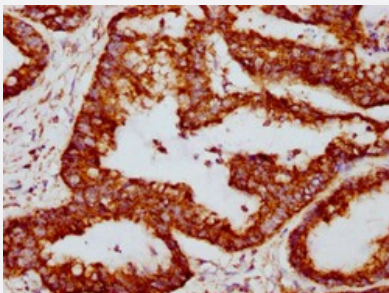
Western Blot

Western blot analysis of Lane 1: Hela whole cell lysate, Lane 2: MCF-7 whole cell lysate, Lane 3: HepG2 whole cell lysate, Lane 4: A549 whole cell lysate and Lane 5: mouse kidney tissue with TSPO recombinant monoclonal antibody, clone 23G2 (Cat # RAB04341).



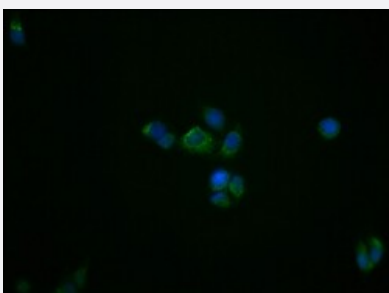
Immunohistochemistry

Immunohistochemical staining of human pancreatic cancer with TSPO recombinant monoclonal antibody, clone 23G2 (Cat # RAB04341) (diluted at 1:117)



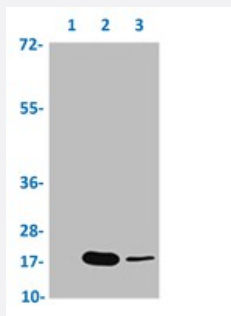
Immunohistochemistry

Immunohistochemical staining of human colon cancer with TSPO recombinant monoclonal antibody, clone 23G2 (Cat # RAB04341) (diluted at 1:117)



Immunofluorescence

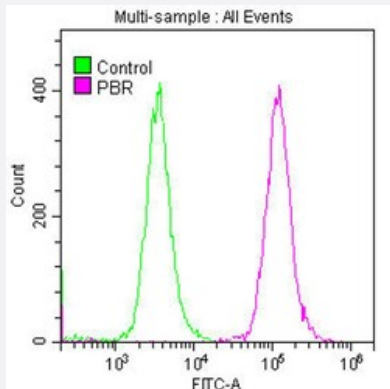
Immunofluorescent staining of PC3 cells with TSPO recombinant monoclonal antibody, clone 23G2 (Cat # RAB04341) (diluted at 1:39). The secondary antibody was Alexa Fluor 488-conjugated goat anti-rabbit IgG (green). Counter-stain DAPI was used (blue).



Immunoprecipitation

Immunoprecipitation analysis of HeLa cell lysate with TSPO recombinant monoclonal antibody, clone 23G2 (Cat # RAB04341).

Lane 1: rabbit control IgG, Lane 2: RAB04341 precipitates and Lane 3: Input (Hela whole cell lysate).



Flow Cytometry

Flow cytometric analysis of HepG2 cells with TSPO recombinant monoclonal antibody, clone 23G2 (Cat # RAB04341) (diluted at 1:50; purple line) and negative control (green line).

Specification

Product Description	Rabbit recombinant monoclonal antibody raised against human TSPO.
Antibody Species	Rabbit
Immunogen	Original antibody is raised against a synthetic peptide corresponding to human TSPO.
Theoretical MW (kDa)	Calculated MW: 19, 1
Reactivity	Human, Mouse
Form	Liquid
Purification	Affinity chromatography
Isotype	IgG
Recommend Usage	ELISA Flow Cytometry Immunofluorescence (1:20-1:200) Immunohistochemistry (1:50-1:200) Immunoprecipitation (1:200-1:1000) Western Blot (1:500-1:5000) The optimal working dilution should be determined by the end user.

Storage Buffer	In PBS, pH7.4 (150mM NaCl, 50% glycerol and 0.02% sodium azide)
Storage Instruction	Store at -20 °C or -80 °C. Aliquot to avoid repeated freezing and thawing.
Note	This product contains sodium azide: a POISONOUS AND HAZARDOUS SUBSTANCE which should be handled by trained staff only.

Applications

- Western Blot

Western blot analysis of Lane 1: Hela whole cell lysate, Lane 2: MCF-7 whole cell lysate, Lane 3: HepG2 whole cell lysate, Lane 4: A549 whole cell lysate and Lane 5: mouse kidney tissue with TSPO recombinant monoclonal antibody, clone 23G2 (Cat # RAB04341).

- Immunohistochemistry

Immunohistochemical staining of human pancreatic cancer with TSPO recombinant monoclonal antibody, clone 23G2 (Cat # RAB04341) (diluted at 1:117)

- Immunohistochemistry

Immunohistochemical staining of human colon cancer with TSPO recombinant monoclonal antibody, clone 23G2 (Cat # RAB04341) (diluted at 1:117)

- Immunofluorescence

Immunofluorescent staining of PC3 cells with TSPO recombinant monoclonal antibody, clone 23G2 (Cat # RAB04341) (diluted at 1:39). The secondary antibody was Alexa Fluor 488-conjugated goat anti-rabbit IgG (green). Counter-stain DAPI was used (blue).

- Immunoprecipitation

Immunoprecipitation analysis of HeLa cell lysate with TSPO recombinant monoclonal antibody, clone 23G2 (Cat # RAB04341). Lane 1: rabbit control IgG, Lane 2: RAB04341 precipitates and Lane 3: Input (Hela whole cell lysate).

- Enzyme-linked Immunoabsorbent Assay

- Flow Cytometry

Flow cytometric analysis of HepG2 cells with TSPO recombinant monoclonal antibody, clone 23G2 (Cat # RAB04341) (diluted at 1:50; purple line) and negative control (green line).

Gene Info — TSPO

Entrez GeneID

[706](#)

Protein Accession#	P30536
Gene Name	TSPO
Gene Alias	BZRP , DBI, IBP , MBR, PBR, PKBS, PTBR, mDRC, pk18
Gene Description	translocator protein (18kDa)
Omim ID	109610
Gene Ontology	Hyperlink
Gene Summary	Present mainly in the mitochondrial compartment of peripheral tissues, the protein encoded by this gene interacts with some benzodiazepines and has different affinities than its endogenous counterpart. The protein is a key factor in the flow of cholesterol into mitochondria to permit the initiation of steroid hormone synthesis. Alternate transcriptional splice variants, encoding different isoforms, have been characterized. [provided by RefSeq]
Other Designations	OTTHUMP00000028891 benzodiazepine peripheral binding site mitochondrial benzodiazepine receptor peripheral benzodiazepine receptor peripheral-type benzodiazepine receptor translocator protein

Pathway

- [Neuroactive ligand-receptor interaction](#)

Disease

- [Asperger Syndrome](#)
- [Autistic Disorder](#)
- [Genetic Predisposition to Disease](#)
- [Kidney Failure](#)
- [Lung Neoplasms](#)
- [Mood Disorders](#)
- [Panic Disorder](#)
- [Social Perception](#)
- [Urinary Bladder Neoplasms](#)