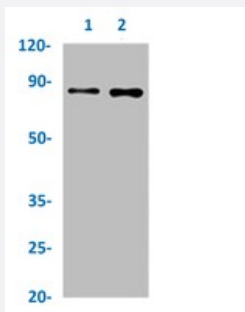


RecomAb™

# GOLM1 recombinant monoclonal antibody, clone 9C2

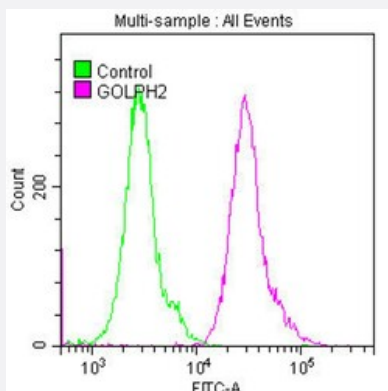
Catalog # RAB04317      Size 100 uL

## Applications



### Western Blot

Western blot analysis of Lane 1: SH-SY5Y whole cell lysate and Lane 2: HepG2 whole cell lysate with GOLM1 recombinant monoclonal antibody, clone 9C2 (Cat # RAB04317).



### Flow Cytometry

Flow cytometric analysis of HeLa cells with GOLM1 recombinant monoclonal antibody, clone 9C2 (Cat # RAB04317) (diluted at 1:50; purple line) and negative control (green line).

## Specification

Product Description	Rabbit recombinant monoclonal antibody raised against human GOLM1.
Antibody Species	Rabbit
Immunogen	Original antibody is raised against a synthetic peptide corresponding to human GOLM1.
Theoretical MW (kDa)	Calculated MW: 46, 4
Reactivity	Human

Form	Liquid
Purification	Affinity chromatography
Isotype	IgG
Recommend Usage	ELISA Flow Cytometry Western Blot (1:500-1:5000) The optimal working dilution should be determined by the end user.
Storage Buffer	In PBS, 150 mM NaCl, pH 7.4 (50% glycerol, 0.02% sodium azide)
Storage Instruction	Store at -20 °C or -80 °C. Aliquot to avoid repeated freezing and thawing.
Note	This product contains sodium azide: a POISONOUS AND HAZARDOUS SUBSTANCE which should be handled by trained staff only.

## Applications

- Western Blot

Western blot analysis of Lane 1:SH-SY5Y whole cell lysate and Lane 2: HepG2 whole cell lysate with GOLM1 recombinant monoclonal antibody, clone 9C2 (Cat # RAB04317).

- Enzyme-linked Immunoabsorbent Assay

- Flow Cytometry

Flow cytometric analysis of HeLa cells with GOLM1 recombinant monoclonal antibody, clone 9C2 (Cat # RAB04317) (diluted at 1:50; purple line) and negative control (green line).

## Gene Info — GOLM1

Entrez GeneID	<a href="#">51280</a>
Protein Accession#	<a href="#">Q8NBJ4</a>
Gene Name	GOLM1
Gene Alias	C9orf155, FLJ22634, FLJ23608, GOLPH2, GP73, PSEC0257, bA379P1.3
Gene Description	golgi membrane protein 1
Omim ID	<a href="#">606804</a>

## Gene Ontology

[Hyperlink](#)

## Gene Summary

The Golgi complex plays a key role in the sorting and modification of proteins exported from the endoplasmic reticulum. The protein encoded by this gene is a type II Golgi transmembrane protein. It processes proteins synthesized in the rough endoplasmic reticulum and assists in the transport of protein cargo through the Golgi apparatus. The expression of this gene has been observed to be upregulated in response to viral infection. Alternatively spliced transcript variants encoding the same protein have been described for this gene. [provided by RefSeq]

## Other Designations

OTTHUMP00000021587|golgi membrane protein GP73|golgi phosphoprotein 2|golgi protein, 73-kD

## Disease

- [Alzheimer disease](#)
- [Cognition](#)
- [Genetic Predisposition to Disease](#)
- [Tobacco Use Disorder](#)