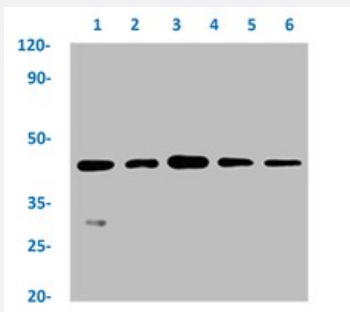


RecomAb™

NDRG1 recombinant monoclonal antibody, clone 4C8

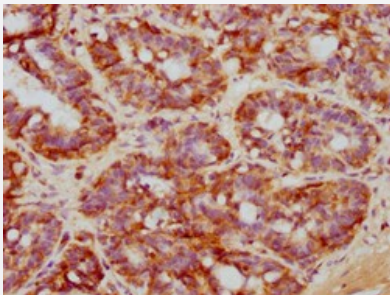
Catalog # RAB04315 Size 100 uL

Applications



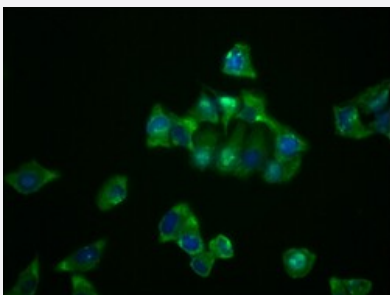
Western Blot

Western blot analysis of Lane 1: Hela whole cell lysate, Lane 2: 293 whole cell lysate, Lane 3: PC3 whole cell lysate, Lane 4: U87 whole cell lysate and Lane 5: mouse kidney tissue with NDRG1 recombinant monoclonal antibody, clone 4C8 (Cat # RAB04315).



Immunohistochemistry

Immunohistochemical staining of human breast carcinoma with NDRG1 recombinant monoclonal antibody, clone 4C8 (Cat # RAB04315) (diluted at 1:71.6666666666667).



Immunofluorescence

Immunofluorescent staining of Hela cells with NDRG1 recombinant monoclonal antibody, clone 4C8 (Cat # RAB04315) (diluted at 1:23). The secondary antibody was Alexa Fluor 488-conjugated goat anti-rabbit IgG (green). Counter-stain DAPI was used (blue).

Specification

Product Description

Rabbit recombinant monoclonal antibody raised against human NDRG1.

Antibody Species	Rabbit
Immunogen	Original antibody is raised against a synthetic peptide corresponding to human NDRG1.
Theoretical MW (kDa)	Calculated MW: 43, 3
Reactivity	Human, Mouse
Form	Liquid
Purification	Affinity chromatography
Isotype	IgG
Recommend Usage	ELISA Immunofluorescence (1:20-1:200) Immunohistochemistry (1:50-1:200) Western Blot (1:500-1:5000) The optimal working dilution should be determined by the end user.
Storage Buffer	In PBS, 150 mM NaCl, pH 7.4 (50% glycerol, 0.02% sodium azide)
Storage Instruction	Store at -20 °C or -80 °C. Aliquot to avoid repeated freezing and thawing.
Note	This product contains sodium azide: a POISONOUS AND HAZARDOUS SUBSTANCE which should be handled by trained staff only.

Applications

- Western Blot

Western blot analysis of Lane 1: Hela whole cell lysate, Lane 2: 293 whole cell lysate, Lane 3: PC3 whole cell lysate, Lane 4: U87 whole cell lysate and Lane 5: mouse kidney tissue with NDRG1 recombinant monoclonal antibody, clone 4C8 (Cat # RAB04315).

- Immunohistochemistry

Immunohistochemical staining of human breast carcinoma with NDRG1 recombinant monoclonal antibody, clone 4C8 (Cat # RAB04315) (diluted at 1:71.66666666666667).

- Immunofluorescence

Immunofluorescent staining of Hela cells with NDRG1 recombinant monoclonal antibody, clone 4C8 (Cat # RAB04315) (diluted at 1:23). The secondary antibody was Alexa Fluor 488-conjugated goat anti-rabbit IgG (green). Counter-stain DAPI was used (blue).

- Enzyme-linked Immunoabsorbent Assay

Gene Info — NDRG1

Entrez GeneID	10397
Protein Accession#	Q92597
Gene Name	NDRG1
Gene Alias	CAP43, CMT4D, DRG1, GC4, HMSNL, NDR1, NMSL, PROXY1, RIT42, RTP, TARG1, TDD5
Gene Description	N-myc downstream regulated 1
Omim ID	601455 605262
Gene Ontology	Hyperlink
Gene Summary	This gene is a member of the N-myc downregulated gene family which belongs to the alpha/beta hydrolase superfamily. The protein encoded by this gene is a cytoplasmic protein involved in stress responses, hormone responses, cell growth, and differentiation. It is necessary for p53-mediated caspase activation and apoptosis. Mutation in this gene has been reported to be causative for hereditary motor and sensory neuropathy-Lom. Multiple alternatively spliced variants, encoding the same protein, have been identified. [provided by RefSeq]
Other Designations	differentiation-related gene 1 protein nickel-specific induction protein Cap43 protein regulated by oxygen-1 reducing agents and tunicamycin-responsive protein tunicamycin-responsive protein

Disease

- [Alzheimer disease](#)
- [Charcot-Marie-Tooth Disease](#)
- [Cognition](#)
- [Colorectal Neoplasms](#)
- [Deafness](#)
- [Genetic Predisposition to Disease](#)
- [Tobacco Use Disorder](#)