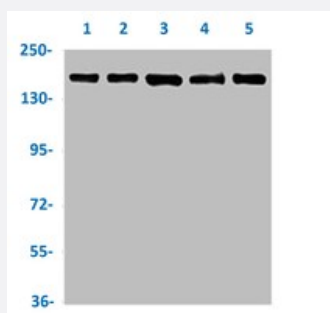


RecomAb™

HDAC6 recombinant monoclonal antibody, clone 2H12

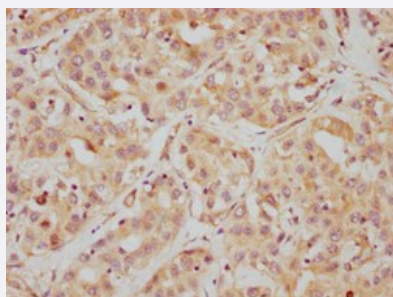
Catalog # RAB04308 Size 100 uL

Applications



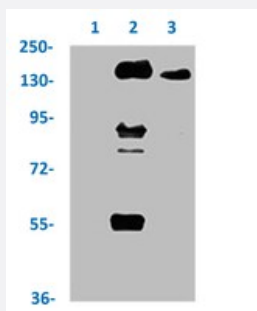
Western Blot

Western blot analysis of Lane 1: Hela whole cell lysate, Lane 2: MCK-7 whole cell lysate, Lane 3: HepG2 whole cell lysate, Lane 4: K562 whole cell lysate and Lane 5: Jurkat whole cell lysate with HDAC6 recombinant monoclonal antibody, clone 2H12 (Cat # RAB04308).



Immunohistochemistry

Immunohistochemical staining of human liver cancer with HDAC6 recombinant monoclonal antibody, clone 2H12 (Cat # RAB04308) (diluted at 1:112.5)



Immunoprecipitation

Immunoprecipitation analysis of HepG2 cell lysate with HDAC6 recombinant monoclonal antibody, clone 2H12 (Cat # RAB04308).

Lane 1: rabbit control IgG, Lane 2: RAB04308 precipitates and Lane 3: Input (HepG2 whole cell lysates).

Specification

Product Description

Rabbit recombinant monoclonal antibody raised against human HDAC6.

Antibody Species	Rabbit
Immunogen	Original antibody is raised against a synthetic peptide corresponding to human HDAC6.
Theoretical MW (kDa)	Calculated MW: 132,
Reactivity	Human
Form	Liquid
Purification	Affinity chromatography
Isotype	IgG
Recommend Usage	ELISA Immunohistochemistry (1:50-1:200) Immunoprecipitation (1:200-1:1000) Western Blot (1:500-1:5000) The optimal working dilution should be determined by the end user.
Storage Buffer	In PBS, 150 mM NaCl, pH 7.4 (50% glycerol, 0.02% sodium azide)
Storage Instruction	Store at -20 °C or -80 °C. Aliquot to avoid repeated freezing and thawing.
Note	This product contains sodium azide: a POISONOUS AND HAZARDOUS SUBSTANCE which should be handled by trained staff only.

Applications

- Western Blot

Western blot analysis of Lane 1: Hela whole cell lysate, Lane 2: MCK-7 whole cell lysate, Lane 3: HepG2 whole cell lysate, Lane 4: K562 whole cell lysate and Lane 5: Jurkat whole cell lysate with HDAC6 recombinant monoclonal antibody, clone 2H12 (Cat # RAB04308).

- Immunohistochemistry

Immunohistochemical staining of human liver cancer with HDAC6 recombinant monoclonal antibody, clone 2H12 (Cat # RAB04308) (diluted at 1:112.5)

- Immunoprecipitation

Immunoprecipitation analysis of HepG2 cell lysate with HDAC6 recombinant monoclonal antibody, clone 2H12 (Cat # RAB04308).

Lane 1: rabbit control IgG, Lane 2: RAB04308 precipitates and Lane 3: Input (HepG2 whole cell lysates).

- Enzyme-linked Immunoabsorbent Assay

Gene Info — HDAC6

Entrez GeneID [10013](#)**Protein Accession#** [Q9UBN7](#)**Gene Name** HDAC6**Gene Alias** FLJ16239, HD6, JM21**Gene Description** histone deacetylase 6**Omim ID** [300272](#)**Gene Ontology** [Hyperlink](#)

Gene Summary Histones play a critical role in transcriptional regulation, cell cycle progression, and developmental events. Histone acetylation/deacetylation alters chromosome structure and affects transcription factor access to DNA. The protein encoded by this gene belongs to class II of the histone deacetylase/acuc/apha family. It contains an internal duplication of two catalytic domains which appear to function independently of each other. This protein possesses histone deacetylase activity and represses transcription. [provided by RefSeq]

Other Designations OTTHUMP00000032398

Disease

- [Cardiovascular Diseases](#)
- [Diabetes Mellitus](#)
- [Edema](#)
- [Parkinson disease](#)