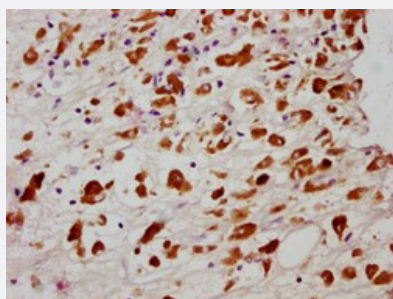


RecomAb™

MLKL (phospho S358) recombinant monoclonal antibody, clone 4A6

Catalog # RAB04295 Size 100 uL

Applications



Immunohistochemistry

Immunohistochemical staining of human melanoma cancer with MLKL (phospho S358) recombinant monoclonal antibody, clone 4A6 (Cat # RAB04295) (diluted at 1:100).

Specification

Product Description	Rabbit recombinant monoclonal antibody raised against human MLKL.
Antibody Species	Rabbit
Immunogen	Original antibody is raised against a synthetic phosphopeptide corresponding to residues surrounding S358 of human MLKL.
Reactivity	Human
Form	Liquid
Purification	Affinity chromatography
Isotype	IgG
Recommend Usage	ELISA Immunohistochemistry (1:50-1:200) The optimal working dilution should be determined by the end user.
Storage Buffer	In PBS, 150 mM NaCl, pH 7.4 (50% glycerol, 0.02% sodium azide)

Storage Instruction

Store at -20 °C or -80 °C.
Aliquot to avoid repeated freezing and thawing.

Note

This product contains sodium azide: a POISONOUS AND HAZARDOUS SUBSTANCE which should be handled by trained staff only.

Applications

- Immunohistochemistry

Immunohistochemical staining of human melanoma cancer with MLKL (phospho S358) recombinant monoclonal antibody, clone 4A6 (Cat # RAB04295) (diluted at 1:100).

- Enzyme-linked Immunoabsorbent Assay

Gene Info — MLKL

Entrez GeneID[197259](#)**Protein Accession#**[Q8NB16](#)**Gene Name**

MLKL

Gene Alias

FLJ34389

Gene Description

mixed lineage kinase domain-like

Gene Ontology[Hyperlink](#)**Other Designations**

-

Disease

- [Genetic Predisposition to Disease](#)