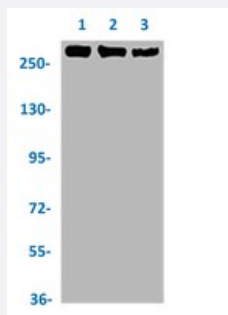


RecomAb™

POLR2A (phospho S2) recombinant monoclonal antibody, clone 2G1

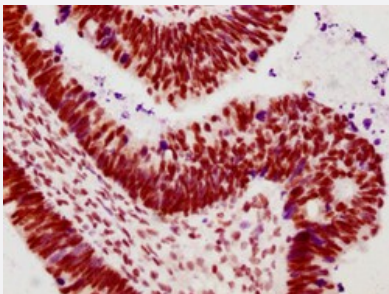
Catalog # RAB04285 Size 100 uL

Applications



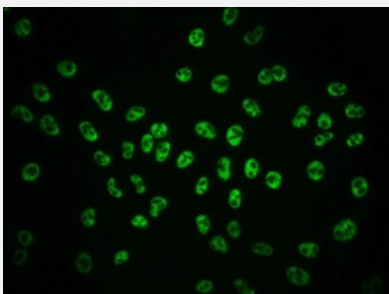
Western Blot

Western blot analysis of Lane 1: Hela whole cell lysate, Lane 2: A549 whole cell lysate and Lane 3: 293 whole cell lysate with POLR2A (phospho S2) recombinant monoclonal antibody, clone 2G1 (Cat # RAB04285).



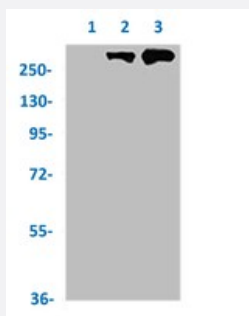
Immunohistochemistry

Immunohistochemical staining of human ovarian cancer with POLR2A (phospho S2) recombinant monoclonal antibody, clone 2G1 (Cat # RAB04285) (diluted at 1:100)



Immunofluorescence

Immunofluorescent staining of Hela cells with POLR2A (phospho S2) recombinant monoclonal antibody, clone 2G1 (Cat # RAB04285) (diluted at 1:100). The secondary antibody was Alexa Fluor 488-conjugated goat anti-rabbit IgG (green). Counter-stain DAPI was used (blue).



Immunoprecipitation

Immunoprecipitation analysis of HeLa cell lysate with POLR2A (phospho S2) recombinant monoclonal antibody, clone 2G1 (Cat # RAB04285).

Lane 1: rabbit control IgG, Lane 2: RAB04285 precipitates and Lane 3: Input (Hela whole cell lysates).

Specification

Product Description	Rabbit recombinant monoclonal antibody raised against human POLR2A.
Antibody Species	Rabbit
Immunogen	Original antibody is raised against a synthetic phosphopeptide corresponding to residues surrounding S2 of human POLR2A.
Theoretical MW (kDa)	Calculated MW: 270 k
Reactivity	Human
Form	Liquid
Purification	Affinity chromatography
Isotype	IgG
Recommend Usage	ELISA Immunofluorescence (1:20-1:200) Immunohistochemistry (1:50-1:200) Immunoprecipitation (1:200-1:1000) Western Blot (1:500-1:5000) The optimal working dilution should be determined by the end user.
Storage Buffer	In PBS, 150 mM NaCl, pH 7.4 (50% glycerol, 0.02% sodium azide)
Storage Instruction	Store at -20 °C or -80 °C. Aliquot to avoid repeated freezing and thawing.
Note	This product contains sodium azide: a POISONOUS AND HAZARDOUS SUBSTANCE which should be handled by trained staff only.

Applications

- Western Blot

Western blot analysis of Lane 1:HeLa whole cell lysate, Lane 2: A549 whole cell lysate and Lane 3: 293 whole cell lysate with POLR2A (phospho S2) recombinant monoclonal antibody, clone 2G1 (Cat # RAB04285).

- Immunohistochemistry

Immunohistochemical staining of human ovarian cancer with POLR2A (phospho S2) recombinant monoclonal antibody, clone 2G1 (Cat # RAB04285) (diluted at 1:100)

- Immunofluorescence

Immunofluorescent staining of HeLa cells with POLR2A (phospho S2) recombinant monoclonal antibody, clone 2G1 (Cat # RAB04285) (diluted at 1:100). The secondary antibody was Alexa Fluor 488-conjugated goat anti-rabbit IgG (green). Counter-stain DAPI was used (blue).

- Immunoprecipitation

Immunoprecipitation analysis of HeLa cell lysate with POLR2A (phospho S2) recombinant monoclonal antibody, clone 2G1 (Cat # RAB04285).

Lane 1: rabbit control IgG, Lane 2: RAB04285 precipitates and Lane 3: Input (HeLa whole cell lysates).

- Enzyme-linked Immunoabsorbent Assay

Gene Info — POLR2A

Entrez GeneID [5430](#)

Protein Accession# [P24928](#)

Gene Name POLR2A

Gene Alias MGC75453, POLR2, POLRA, RPB1, RPBh1, RPO2, RPOL2, RpIIIS, hRPB220, hsRPB1

Gene Description polymerase (RNA) II (DNA directed) polypeptide A, 220kDa

Omim ID [180660](#)

Gene Ontology [Hyperlink](#)

Gene Summary This gene encodes the largest subunit of RNA polymerase II, the polymerase responsible for synthesizing messenger RNA in eukaryotes. The product of this gene contains a carboxy terminal domain composed of heptapeptide repeats that are essential for polymerase activity. These repeats contain serine and threonine residues that are phosphorylated in actively transcribing RNA polymerase. In addition, this subunit, in combination with several other polymerase subunits, forms the DNA binding domain of the polymerase, a groove in which the DNA template is transcribed into RNA. [provided by RefSeq]

Other Designations

DNA directed RNA polymerase II polypeptide A|DNA-directed RNA polymerase II largest subunit,
RNA polymerase II 220 kd subunit|polymerase (RNA) II (DNA directed) polypeptide A (220kD)

Pathway

- [Metabolic pathways](#)
- [Purine metabolism](#)
- [Pyrimidine metabolism](#)
- [RNA polymerase](#)

Disease

- [Cardiovascular Diseases](#)
- [Diabetes Mellitus](#)
- [Edema](#)
- [Urinary Bladder Neoplasms](#)