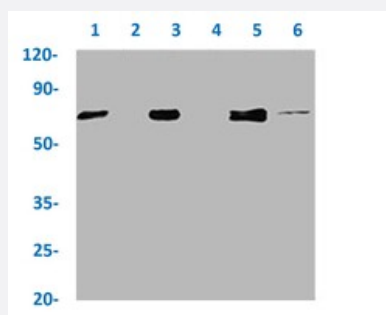


RecomAb™

# ATF2 (phospho T71) recombinant monoclonal antibody, clone 4F2

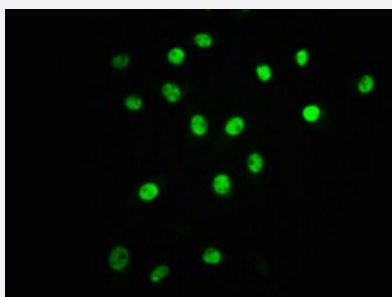
Catalog # RAB04248      Size 100 uL

## Applications



### Western Blot

Western blot analysis of Lane 1: 293 whole cell lysate (treated with Calyculin A 50 nM/60 mins), Lane 2: 293 whole cell lysate (not treated), Lane 3: A549 whole cell lysate (treated with EGF 100 ng/mL/20 mins), Lane 4: A549 whole cell lysate (not treated), Lane 5: HepG2 whole cell lysate (treated with EGF 100 ng/mL/20 mins) and Lane 6: HepG2 whole cell lysate (not treated) with ATF2 (phospho T71) recombinant monoclonal antibody, clone 4F2 (Cat # RAB04248).



### Immunofluorescence

Immunofluorescent staining of A549 cells with ATF2 (phospho T71) recombinant monoclonal antibody, clone 4F2 (Cat # RAB04248) (diluted at 1:63). The secondary antibody was Alexa Fluor 488-conjugated goat anti-rabbit IgG (green). Counter-stain DAPI was used (blue).

## Specification

Product Description	Rabbit recombinant monoclonal antibody raised against human ATF2.
Antibody Species	Rabbit
Immunogen	Original antibody is raised against a synthetic phosphopeptide corresponding to residues surrounding T71 of human ATF2.
Theoretical MW (kDa)	Calculated MW: 70 kD
Reactivity	Human

Form	Liquid
Purification	Affinity chromatography
Isotype	IgG
Recommend Usage	ELISA Immunofluorescence (1:20-1:200) Western Blot (1:500-1:5000) The optimal working dilution should be determined by the end user.
Storage Buffer	In PBS, pH7.4 (150mM NaCl, 50% glycerol and 0.02% sodium azide)
Storage Instruction	Store at -20 °C or -80 °C. Aliquot to avoid repeated freezing and thawing.
Note	This product contains sodium azide: a POISONOUS AND HAZARDOUS SUBSTANCE which should be handled by trained staff only.

## Applications

- Western Blot

Western blot analysis of Lane 1: 293 whole cell lysate (treated with Calyculin A 50 nM/60 mins), Lane 2: 293 whole cell lysate (not treated), Lane 3: A549 whole cell lysate (treated with EGF 100 ng/mL/20 mins), Lane 4: A549 whole cell lysate (not treated), Lane 5: HepG2 whole cell lysate (treated with EGF 100 ng/mL/20 mins) and Lane 6: HepG2 whole cell lysate (not treated) with ATF2 (phospho T71) recombinant monoclonal antibody, clone 4F2 (Cat # RAB04248).

- Immunofluorescence

Immunofluorescent staining of A549 cells with ATF2 (phospho T71) recombinant monoclonal antibody, clone 4F2 (Cat # RAB04248) (diluted at 1:63). The secondary antibody was Alexa Fluor 488-conjugated goat anti-rabbit IgG (green). Counter-stain DAPI was used (blue).

- Enzyme-linked Immunoabsorbent Assay

## Gene Info — ATF2

Entrez GeneID	<a href="#">1386</a>
Protein Accession#	<a href="#">P15336</a>
Gene Name	ATF2
Gene Alias	CRE-BP1, CREB2, HB16, MGC111558, TREB7
Gene Description	activating transcription factor 2

Omim ID [123811](#)

Gene Ontology [Hyperlink](#)

**Gene Summary**

This gene encodes a transcription factor that is a member of the leucine zipper family of DNA binding proteins. This protein binds to the cAMP-responsive element (CRE), an octameric palindromic. The protein forms a homodimer or heterodimer with c-Jun and stimulates CRE-dependent transcription. The protein is also a histone acetyltransferase (HAT) that specifically acetylates histones H2B and H4 in vitro; thus it may represent a class of sequence-specific factors that activate transcription by direct effects on chromatin components. Additional transcript variants have been identified but their biological validity has not been determined. [provided by RefSeq]

**Other Designations**

OTTHUMP00000163262|activating transcription factor 2 splice variant ATF2-var2|cAMP responsive element binding protein 2, formerly

## Pathway

- [MAPK signaling pathway](#)

## Disease

- [Bipolar Disorder](#)
- [Cardiovascular Diseases](#)
- [Diabetes Mellitus](#)
- [Edema](#)
- [Genetic Predisposition to Disease](#)
- [Schizophrenia](#)
- [Tobacco Use Disorder](#)