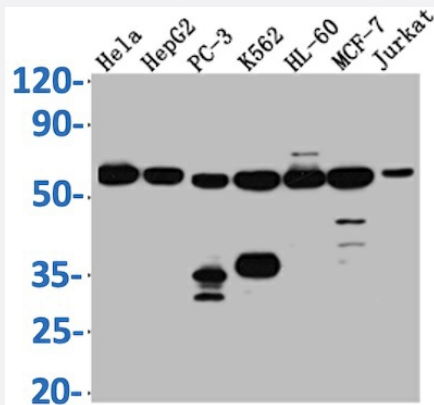


RecomAb™

# PTBP1 recombinant monoclonal antibody, clone 8A1

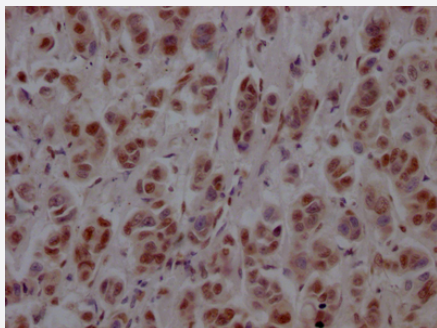
Catalog # RAB04171      Size 100 uL

## Applications



### Western Blot

Western Blot analysis of Lane 1: HeLa whole cell lysate; Lane 2: HepG2 whole cell lysate; Lane 3: PC-3 whole cell lysate; Lane 4: K562 whole cell lysate; Lane 5: HL-60 whole cell lysate; Lane 6: MCF-7 whole cell lysate; Lane 7: Jurkat whole cell lysate.



### Immunohistochemistry

Immunohistochemistry image of PTBP1 recombinant monoclonal antibody, clone 8A1 diluted at 1:100 and staining in paraffin-embedded human breast cancer performed on a Leica Bond™ system.

## Specification

Product Description	Rabbit recombinant monoclonal antibody raised against human PTBP1.
Antibody Species	Rabbit
Immunogen	Original antibody is raised against recombinant protein corresponding to full length human PTBP1.
Reactivity	Human
Form	Liquid

Purification	Affinity-chromatography
Isotype	IgG
Recommend Usage	ELISA Immunohistochemistry (1:50-1:200) Western Blot (1:500-1:5000) The optimal working dilution should be determined by the end user.
Storage Buffer	In PBS, pH7.4 (150 mM NaCl, 50% glycerol and 0.02% sodium azide)
Storage Instruction	Store at -20°C or -80°C. Aliquot to avoid repeated freezing and thawing.
Note	This product contains sodium azide: a POISONOUS AND HAZARDOUS SUBSTANCE which should be handled by trained staff only.

## Applications

- Western Blot

Western Blot analysis of Lane 1: Hela whole cell lysate; Lane 2: HepG2 whole cell lysate; Lane 3: PC-3 whole cell lysate; Lane 4: K562 whole cell lysate; Lane 5: HL-60 whole cell lysate; Lane 6: MCF-7 whole cell lysate; Lane 7: Jurkat whole cell lysate.

- Immunohistochemistry

Immunohistochemistry image of PTBP1 recombinant monoclonal antibody, clone 8A1 diluted at 1:100 and staining in paraffin-embedded human breast cancer performed on a Leica Bond™ system.

- Enzyme-linked Immunoabsorbent Assay

## Gene Info — PTBP1

Entrez GeneID	<a href="#">5725</a>
Protein Accession#	<a href="#">P26599</a>
Gene Name	PTBP1
Gene Alias	HNRNP-I, HNRNPI, HNRPI, MGC10830, MGC8461, PTB, PTB-1, PTB-T, PTB2, PTB3, PTB4, pPTB
Gene Description	polypyrimidine tract binding protein 1
Omim ID	<a href="#">600693</a>
Gene Ontology	<a href="#">Hyperlink</a>

**Gene Summary**

This gene belongs to the subfamily of ubiquitously expressed heterogeneous nuclear ribonucleoproteins (hnRNPs). The hnRNPs are RNA-binding proteins and they complex with heterogeneous nuclear RNA (hnRNA). These proteins are associated with pre-mRNAs in the nucleus and appear to influence pre-mRNA processing and other aspects of mRNA metabolism and transport. While all of the hnRNPs are present in the nucleus, some seem to shuttle between the nucleus and the cytoplasm. The hnRNP proteins have distinct nucleic acid binding properties. The protein encoded by this gene has four repeats of quasi-RNA recognition motif (RRM) domains that bind RNAs. This protein binds to the intronic polypyrimidine tracts that requires pre-mRNA splicing and acts via the protein degradation ubiquitin-proteasome pathway. It may also promote the binding of U2 snRNP to pre-mRNAs. This protein is localized in the nucleoplasm and it is also detected in the perinuclear structure. Alternatively spliced transcript variants encoding different isoforms have been described. [provided by RefSeq]

**Other Designations**

RNA-binding protein|heterogeneous nuclear ribonucleoprotein l|heterogeneous nuclear ribonucleoprotein polypeptide l|polypyrimidine tract binding protein (heterogeneous nuclear ribonucleoprotein l)|polypyrimidine tract-binding protein 1

**Disease**

- [Alzheimer disease](#)
- [Cardiovascular Diseases](#)
- [Diabetes Complications](#)
- [Metabolic Syndrome X](#)
- [Neoplasms](#)
- [Osteoporosis](#)