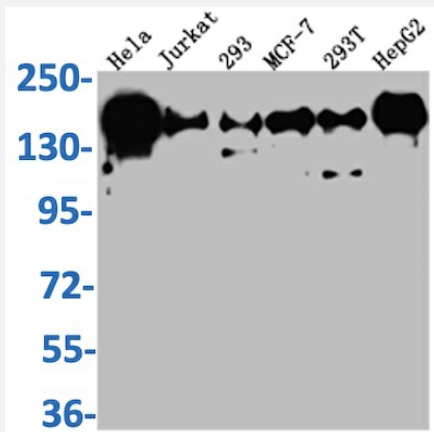


RecomAb™

PELP1 recombinant monoclonal antibody, clone 6H4

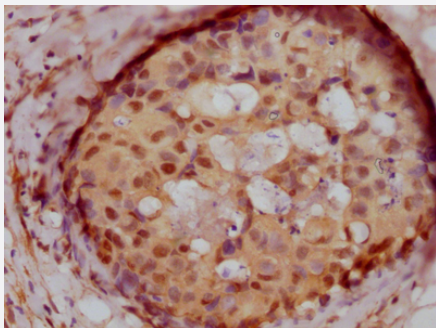
Catalog # RAB04162 Size 100 uL

Applications



Western Blot

Western Blot analysis of Lane 1: HeLa whole cell lysate; Lane 2: Jurkat whole cell lysate; Lane 3: 293 whole cell lysate; Lane 4: MCF-7 whole cell lysate; Lane 5: 293T whole cell lysate; Lane 6: HepG2 whole cell lysate.



Immunohistochemistry

Immunohistochemistry image of PELP1 recombinant monoclonal antibody, clone 6H4 diluted at 1:100 and staining in paraffin-embedded human breast cancer performed on a Leica Bond™ system.

Specification

Product Description	Rabbit recombinant monoclonal antibody raised against human PELP1.
Antibody Species	Rabbit
Immunogen	Original antibody is raised against recombinant protein corresponding to full length human PELP1.
Reactivity	Human
Form	Liquid

Purification	Affinity-chromatography
Isotype	IgG
Recommend Usage	ELISA Immunohistochemistry (1:50-1:200) Western Blot (1:500-1:5000) The optimal working dilution should be determined by the end user.
Storage Buffer	In PBS, pH7.4 (150 mM NaCl, 50% glycerol and 0.02% sodium azide)
Storage Instruction	Store at -20°C or -80°C. Aliquot to avoid repeated freezing and thawing.
Note	This product contains sodium azide: a POISONOUS AND HAZARDOUS SUBSTANCE which should be handled by trained staff only.

Applications

- Western Blot

Western Blot analysis of Lane 1: Hela whole cell lysate; Lane 2: Jurkat whole cell lysate; Lane 3: 293 whole cell lysate; Lane 4: MCF-7 whole cell lysate; Lane 5: 293T whole cell lysate; Lane 6: HepG2 whole cell lysate.

- Immunohistochemistry

Immunohistochemistry image of PELP1 recombinant monoclonal antibody, clone 6H4 diluted at 1:100 and staining in paraffin-embedded human breast cancer performed on a Leica Bond™ system.

- Enzyme-linked Immunoabsorbent Assay

Gene Info — PELP1

Entrez GeneID	27043
Protein Accession#	Q8IZL8
Gene Name	PELP1
Gene Alias	HMX3, MNAR, P160
Gene Description	proline, glutamate and leucine rich protein 1
Omim ID	609455
Gene Ontology	Hyperlink

Gene Summary

PELP1 is a coactivator of estrogen receptor (see ESR1; MIM 133430)-mediated transcription and a corepressor of other nuclear hormone receptors and sequence-specific transcription factors (Choi et al., 2004 [PubMed 15456770]).[supplied by OMIM]

Other Designations

modulator of nongenomic activity of estrogen receptor|proline and glutamic acid rich nuclear protein|proline, glutamic acid and leucine rich protein 1|proline-, glutamic acid-, leucine-rich protein 1|transcription factor HMX3

Disease

- [Breast cancer](#)
- [Breast Neoplasms](#)
- [Genetic Predisposition to Disease](#)