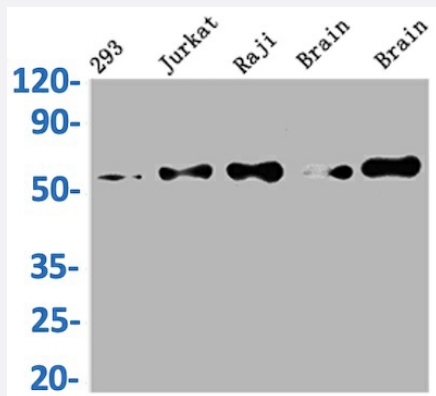


RecomAb™

# PAK2 recombinant monoclonal antibody, clone 6D12

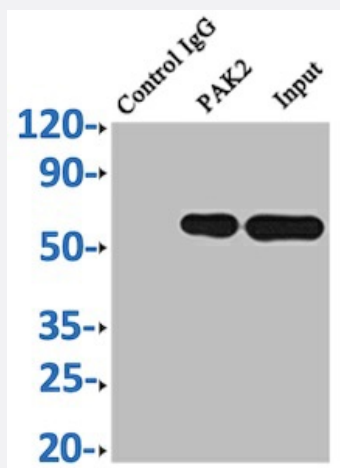
Catalog # RAB04158      Size 100 uL

## Applications



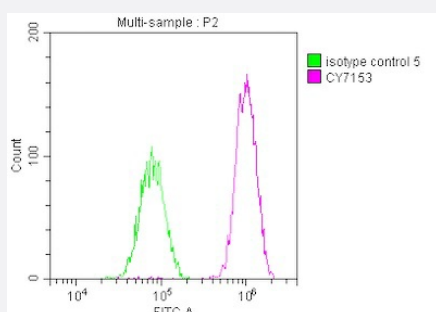
### Western Blot

Western Blot analysis of Lane 1: 293 whole cell lysate; Lane 2: Jurkat whole cell lysate; Lane 3: Raji whole cell lysate; Lane 4: Mouse brain tissue; Lane 5: Rat brain tissue.



### Immunoprecipitation

Immunoprecipitating PAK2 in Raji whole cell lysate.



### Flow Cytometry

Overlay histogram showing HepG2 cells stained with PAK2 recombinant monoclonal antibody, clone 6D12 (red line) at 1:50.

## Specification

<b>Product Description</b>	Rabbit recombinant monoclonal antibody raised against human, mouse and rat PAK2.
<b>Antibody Species</b>	Rabbit
<b>Immunogen</b>	Original antibody is raised against recombinant protein corresponding to full length human PAK2.
<b>Reactivity</b>	Human, Mouse, Rat
<b>Form</b>	Liquid
<b>Purification</b>	Affinity-chromatography
<b>Isotype</b>	IgG
<b>Recommend Usage</b>	ELISA Flow Cytometry (1:20-1:200) Immunoprecipitation(1:200-1:1000) Western Blot (1:500-1:5000) The optimal working dilution should be determined by the end user.
<b>Storage Buffer</b>	In PBS, pH7.4 (150 mM NaCl, 50% glycerol and 0.02% sodium azide)
<b>Storage Instruction</b>	Store at -20°C or -80°C. Aliquot to avoid repeated freezing and thawing.
<b>Note</b>	This product contains sodium azide: a POISONOUS AND HAZARDOUS SUBSTANCE which should be handled by trained staff only.

## Applications

- Western Blot

Western Blot analysis of Lane 1: 293 whole cell lysate; Lane 2: Jurkat whole cell lysate; Lane 3: Raji whole cell lysate; Lane 4: Mouse brain tissue; Lane 5: Rat brain tissue.

- Immunoprecipitation

Immunoprecipitating PAK2 in Raji whole cell lysate.

- Enzyme-linked Immunoabsorbent Assay

- Flow Cytometry

Overlay histogram showing HepG2 cells stained with PAK2 recombinant monoclonal antibody, clone 6D12 (red line) at 1:50.

## Gene Info — PAK2

Entrez GeneID [5062](#)

Protein Accession# [Q13177](#)

Gene Name PAK2

Gene Alias PAK65, PAKgamma

Gene Description p21 protein (Cdc42/Rac)-activated kinase 2

Omim ID [605022](#)

Gene Ontology [Hyperlink](#)

**Gene Summary** The p21 activated kinases (PAK) are critical effectors that link Rho GTPases to cytoskeleton reorganization and nuclear signaling. The PAK proteins are a family of serine/threonine kinases that serve as targets for the small GTP binding proteins, CDC42 and RAC1, and have been implicated in a wide range of biological activities. The protein encoded by this gene is activated by proteolytic cleavage during caspase-mediated apoptosis, and may play a role in regulating the apoptotic events in the dying cell. [provided by RefSeq]

**Other Designations** S6/H4 kinase|p21 (CDKN1A)-activated kinase 2|p21-activated kinase 2

## Pathway

- [Axon guidance](#)
- [ErbB signaling pathway](#)
- [Focal adhesion](#)
- [MAPK signaling pathway](#)
- [Regulation of actin cytoskeleton](#)
- [Renal cell carcinoma](#)
- [T cell receptor signaling pathway](#)

## Disease

- [Genetic Predisposition to Disease](#)
- [HIV Infections](#)

- [Schizophrenia](#)