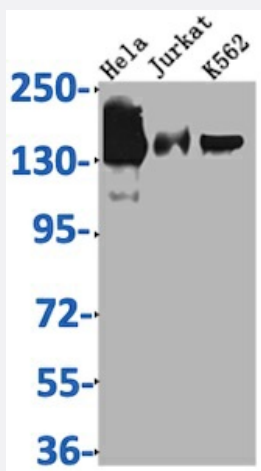


RecomAb™

STAG2 recombinant monoclonal antibody, clone 3H4

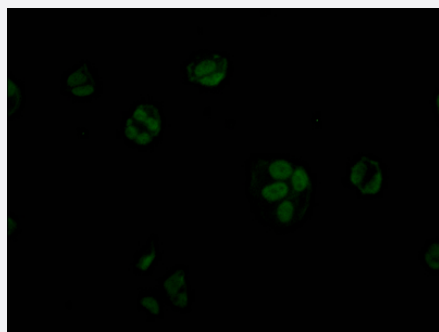
Catalog # RAB04138 Size 100 uL

Applications



Western Blot

Western Blot analysis of Lane 1: HeLa whole cell lysate; Lane 2: Jurkat whole cell lysate; Lane 3: K562 whole cell lysate.



Immunofluorescence

Immunofluorescence staining of MCF7 Cells with STAG2 recombinant monoclonal antibody, clone 3H4 at 1:50, counter-stained with DAPI.

Specification

Product Description	Rabbit recombinant monoclonal antibody raised against human STAG2.
Antibody Species	Rabbit
Immunogen	Original antibody is raised against recombinant protein corresponding to full length human STAG2.
Reactivity	Human

Form	Liquid
Purification	Affinity-chromatography
Isotype	IgG
Recommend Usage	ELISA Immunofluorescence(1:20-1:200) Western Blot (1:500-1:5000) The optimal working dilution should be determined by the end user.
Storage Buffer	In PBS, pH7.4 (150 mM NaCl, 50% glycerol and 0.02% sodium azide)
Storage Instruction	Store at -20°C or -80°C. Aliquot to avoid repeated freezing and thawing.
Note	This product contains sodium azide: a POISONOUS AND HAZARDOUS SUBSTANCE which should be handled by trained staff only.

Applications

- Western Blot

Western Blot analysis of Lane 1: Hela whole cell lysate; Lane 2: Jurkat whole cell lysate; Lane 3: K562 whole cell lysate.

- Immunofluorescence

Immunofluorescence staining of MCF7 Cells with STAG2 recombinant monoclonal antibody, clone 3H4 at 1:50, counter-stained with DAPI.

- Enzyme-linked Immunoabsorbent Assay

Gene Info — STAG2

Entrez GeneID	10735
Protein Accession#	Q8N3U4
Gene Name	STAG2
Gene Alias	DKFZp686P168, DKFZp781H1753, FLJ25871, SA-2, SA2, bA517O1.1
Gene Description	stromal antigen 2
Omim ID	604359
Gene Ontology	Hyperlink

Other Designations

OTTHUMP00000024338|OTTHUMP00000043514|OTTHUMP00000043515|OTTHUMP000000
81754|OTTHUMP00000081755|SCC3 homolog 2

Pathway

- [Cell cycle](#)