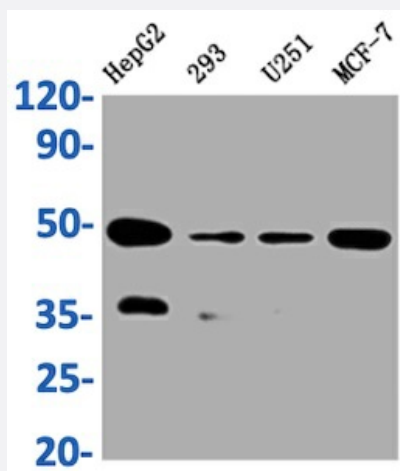


RecomAb™

UQCRC2 recombinant monoclonal antibody, clone 2F6

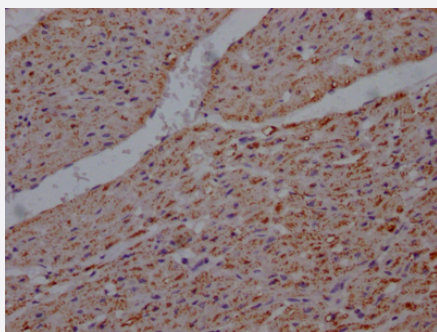
Catalog # RAB04128 Size 100 uL

Applications



Western Blot

Western Blot analysis of Lane 1: HepG2 whole cell lysate; Lane 2: 293 whole cell lysate; Lane 3: U251 whole cell lysate; Lane 4: MCF-7 whole cell lysate.



Immunohistochemistry

Immunohistochemistry image of UQCRC2 recombinant monoclonal antibody, clone 2F6 diluted at 1:100 and staining in paraffin-embedded human heart tissue performed on a Leica Bond™ system.

Specification

| | |
|---------------------|--|
| Product Description | Rabbit recombinant monoclonal antibody raised against human UQCRC2. |
| Antibody Species | Rabbit |
| Immunogen | Original antibody is raised against recombinant protein corresponding to full length human UQCRC2. |
| Reactivity | Human |

| | |
|---------------------|---|
| Form | Liquid |
| Purification | Affinity-chromatography |
| Isotype | IgG |
| Recommend Usage | ELISA Immunohistochemistry (1:50-1:200) Western Blot (1:500-1:5000) The optimal working dilution should be determined by the end user. |
| Storage Buffer | In PBS, pH7.4 (150 mM NaCl, 50% glycerol and 0.02% sodium azide) |
| Storage Instruction | Store at -20°C or -80°C. Aliquot to avoid repeated freezing and thawing. |
| Note | This product contains sodium azide: a POISONOUS AND HAZARDOUS SUBSTANCE which should be handled by trained staff only. |

Applications

- Western Blot

Western Blot analysis of Lane 1: HepG2 whole cell lysate; Lane 2: 293 whole cell lysate; Lane 3: U251 whole cell lysate; Lane 4: MCF-7 whole cell lysate.

- Immunohistochemistry

Immunohistochemistry image of UQCRC2 recombinant monoclonal antibody, clone 2F6 diluted at 1:100 and staining in paraffin-embedded human heart tissue performed on a Leica BondTM system.

- Enzyme-linked Immunoabsorbent Assay

Gene Info — UQCRC2

| | |
|--------------------|--|
| Entrez GeneID | 7385 |
| Protein Accession# | P22695 |
| Gene Name | UQCRC2 |
| Gene Alias | QCR2, UQCR2 |
| Gene Description | ubiquinol-cytochrome c reductase core protein II |
| Omim ID | 191329 |

Gene Ontology

[Hyperlink](#)

Other Designations

-

Pathway

- [Cardiac muscle contraction](#)
- [Metabolic pathways](#)
- [Oxidative phosphorylation](#)

Disease

- [Genetic Predisposition to Disease](#)
- [Narcolepsy](#)