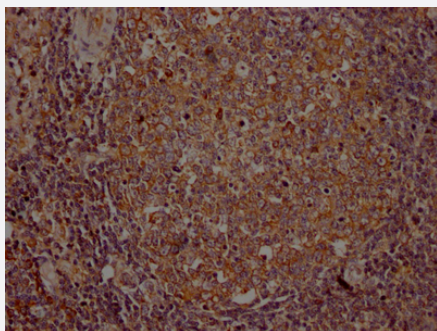


RecomAb™

ITK recombinant monoclonal antibody, clone 8F10

Catalog # RAB04096 Size 100 uL

Applications



Immunohistochemistry

Immunohistochemistry image of ITK recombinant monoclonal antibody, clone 8F10 diluted at 1:100 and staining in paraffin-embedded human lymph node tissue performed on a Leica Bond™ system.

Specification

| | |
|---------------------|--|
| Product Description | Rabbit recombinant monoclonal antibody raised against human ITK. |
| Antibody Species | Rabbit |
| Immunogen | Original antibody is raised against recombinant protein corresponding to full length human ITK. |
| Reactivity | Human |
| Form | Liquid |
| Purification | Affinity chromatography |
| Isotype | IgG |
| Recommend Usage | ELISA Immunohistochemistry (1:50-1:200) The optimal working dilution should be determined by the end user. |
| Storage Buffer | In PBS, pH7.4 (150mM NaCl, 50% glycerol and 0.02% sodium azide) |
| Storage Instruction | Store at -20 °C or -80 °C. Aliquot to avoid repeated freezing and thawing. |

Note

This product contains sodium azide: a POISONOUS AND HAZARDOUS SUBSTANCE which should be handled by trained staff only.

Applications

- Immunohistochemistry

Immunohistochemistry image of ITK recombinant monoclonal antibody, clone 8F10 diluted at 1:100 and staining in paraffin-embedded human lymph node tissue performed on a Leica BondTM system.

- Enzyme-linked Immunoabsorbent Assay

Gene Info — ITK

| | |
|---------------|----------------------|
| Entrez GeneID | 3702 |
|---------------|----------------------|

| | |
|--------------------|------------------------|
| Protein Accession# | Q08881 |
|--------------------|------------------------|

| | |
|-----------|-----|
| Gene Name | ITK |
|-----------|-----|

| | |
|------------|--|
| Gene Alias | EMT, LYK, MGC126257, MGC126258, PSCTK2 |
|------------|--|

| | |
|------------------|-----------------------------|
| Gene Description | IL2-inducible T-cell kinase |
|------------------|-----------------------------|

| | |
|---------|------------------------|
| Omim ID | 186973 |
|---------|------------------------|

| | |
|---------------|---------------------------|
| Gene Ontology | Hyperlink |
|---------------|---------------------------|

| | |
|--------------|---|
| Gene Summary | This gene encodes an intracellular tyrosine kinase expressed in T-cells. The protein contains both SH2 and SH3 domains which are often found in intracellular kinases. It is thought to play a role in T-cell proliferation and differentiation. [provided by RefSeq] |
|--------------|---|

| | |
|--------------------|---|
| Other Designations | homolog of mouse T-cell itk/tsk tyrosine-protein kinase ITK/TSK tyrosine-protein kinase LYK |
|--------------------|---|

Pathway

- [Chemokine signaling pathway](#)
- [Leukocyte transendothelial migration](#)
- [T cell receptor signaling pathway](#)

Disease

- [Asthma](#)
- [Celiac Disease](#)
- [Eczema](#)
- [Genetic Predisposition to Disease](#)
- [Hypersensitivity](#)