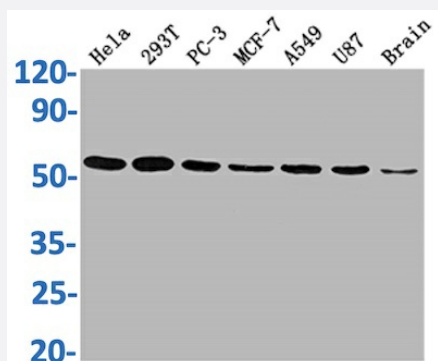


RecomAb™

# KLF4 recombinant monoclonal antibody, clone 3A1

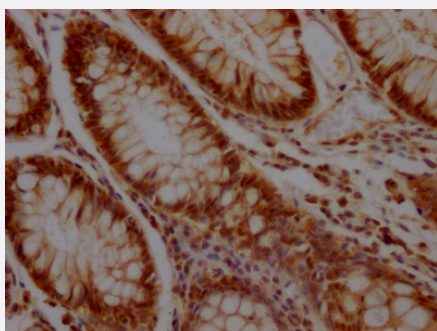
Catalog # RAB04051      Size 100 uL

## Applications



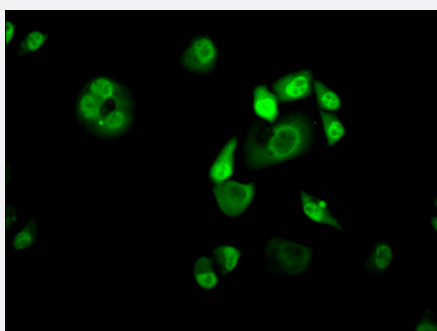
### Western Blot

Western Blot analysis of Lane 1: HeLa whole cell lysate; Lane 2: 293T whole cell lysate; Lane 3: PC-3 whole cell lysate; Lane 4: MCF-7 whole cell lysate; Lane 5: A549 whole cell lysate; Lane 6: U87 whole cell lysate; Lane 7: Brain tissue.



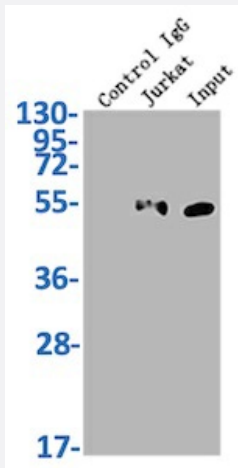
### Immunohistochemistry

Immunohistochemistry image of KLF4 recombinant monoclonal antibody, clone 3A1 diluted at 1:100 and staining in paraffin-embedded human colon cancer performed on a Leica Bond™ system.



### Immunofluorescence

Immunofluorescence staining of HeLa Cells with KLF4 recombinant monoclonal antibody, clone 3A1 at 1:50, counter-stained with DAPI.



## Immunoprecipitation

Immunoprecipitating KLF4 in Hela whole cell lysate.

## Specification

<b>Product Description</b>	Rabbit recombinant monoclonal antibody raised against human KLF4.
<b>Antibody Species</b>	Rabbit
<b>Immunogen</b>	Original antibody is raised against recombinant protein corresponding to full length human KLF4.
<b>Reactivity</b>	Human
<b>Form</b>	Liquid
<b>Purification</b>	Affinity-chromatography
<b>Isotype</b>	IgG
<b>Recommend Usage</b>	ELISA Immunohistochemistry (1:50-1:200) Immunoprecipitation(1:200-1:1000) Immunofluorescence(1:20-1:200) Western Blot (1:500-1:5000) The optimal working dilution should be determined by the end user.
<b>Storage Buffer</b>	In PBS, pH7.4 (150mM NaCl, 50% glycerol and 0.02% sodium azide)
<b>Storage Instruction</b>	Store at -20 °C or -80 °C. Aliquot to avoid repeated freezing and thawing.
<b>Note</b>	This product contains sodium azide: a POISONOUS AND HAZARDOUS SUBSTANCE which should be handled by trained staff only.

## Applications

- Western Blot

Western Blot analysis of Lane 1: Hela whole cell lysate; Lane 2: 293T whole cell lysate; Lane 3: PC-3 whole cell lysate; Lane 4: MCF-7 whole cell lysate; Lane 5: A549 whole cell lysate; Lane 6: U87 whole cell lysate; Lane 7: Brain tissue.

- Immunohistochemistry

Immunohistochemistry image of KLF4 recombinant monoclonal antibody, clone 3A1 diluted at 1:100 and staining in paraffin-embedded human colon cancer performed on a Leica Bond™ system.

- Immunofluorescence

Immunofluorescence staining of Hela Cells with KLF4 recombinant monoclonal antibody, clone 3A1 at 1:50, counter-stained with DAPI.

- Immunoprecipitation

Immunoprecipitating KLF4 in Hela whole cell lysate.

- Enzyme-linked Immunoabsorbent Assay

## Gene Info — KLF4

Entrez GeneID	<a href="#">9314</a>
Protein Accession#	<a href="#">O43474</a>
Gene Name	KLF4
Gene Alias	EZF, GKLF
Gene Description	Kruppel-like factor 4 (gut)
Omim ID	<a href="#">602253</a>
Gene Ontology	<a href="#">Hyperlink</a>
Other Designations	OTTHUMP00000021862 endothelial Kruppel-like zinc finger protein

## Disease

- [Diabetes Mellitus](#)

- [Genetic Predisposition to Disease](#)