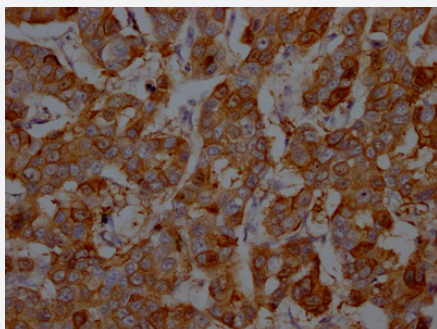


RecomAb™

S100A9 recombinant monoclonal antibody, clone 2E9

Catalog # RAB04047 Size 100 uL

Applications



Immunohistochemistry

Immunohistochemistry image of S100A9 recombinant monoclonal antibody, clone 2E9 diluted at 1:100 and staining in paraffin-embedded human breast cancer performed on a Leica Bond™ system.

Specification

Product Description	Rabbit recombinant monoclonal antibody raised against human S100A9.
Antibody Species	Rabbit
Immunogen	Original antibody is raised against recombinant protein corresponding to full length human S100A9.
Reactivity	Human
Form	Liquid
Purification	Affinity-chromatography
Isotype	IgG
Recommend Usage	ELISA Immunohistochemistry (1:50-1:200) The optimal working dilution should be determined by the end user.
Storage Buffer	In PBS, pH7.4 (150mM NaCl, 50% glycerol and 0.02% sodium azide)
Storage Instruction	Store at -20 °C or -80 °C. Aliquot to avoid repeated freezing and thawing.

Note

This product contains sodium azide: a POISONOUS AND HAZARDOUS SUBSTANCE which should be handled by trained staff only.

Applications

- Immunohistochemistry

Immunohistochemistry image of S100A9 recombinant monoclonal antibody, clone 2E9 diluted at 1:100 and staining in paraffin-embedded human breast cancer performed on a Leica BondTM system.

- Enzyme-linked Immunoabsorbent Assay

Gene Info — S100A9

Entrez GeneID [6280](#)

Protein Accession# [P06702](#)

Gene Name S100A9

Gene Alias 60B8AG, CAGB, CFAG, CGLB, L1AG, LIAG, MAC387, MIF, MRP14, NIF, P14

Gene Description S100 calcium binding protein A9

Omim ID [123886](#)

Gene Ontology [Hyperlink](#)

Gene Summary The protein encoded by this gene is a member of the S100 family of proteins containing 2 EF-hand calcium-binding motifs. S100 proteins are localized in the cytoplasm and/or nucleus of a wide range of cells, and involved in the regulation of a number of cellular processes such as cell cycle progression and differentiation. S100 genes include at least 13 members which are located as a cluster on chromosome 1q21. This protein may function in the inhibition of casein kinase and altered expression of this protein is associated with the disease cystic fibrosis. [provided by RefSeq]

Other Designations OTTHUMP00000015331|S100 calcium-binding protein A9|S100 calcium-binding protein A9 (calgranulin B)|calgranulin B

Disease

- [Dermatitis](#)

- [Genetic Predisposition to Disease](#)

- [Kidney Calculi](#)