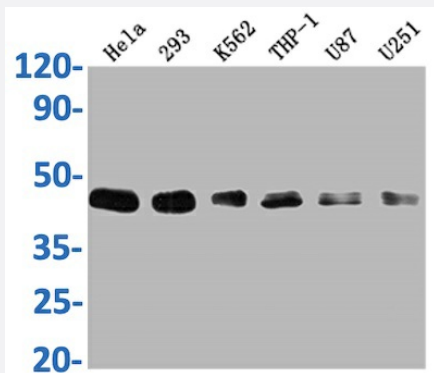


RecomAb™

# BMI1 recombinant monoclonal antibody, clone 1F2

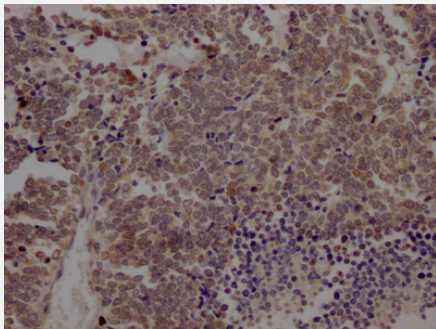
Catalog # RAB04040      Size 100 uL

## Applications



### Western Blot

Western Blot analysis of Lane 1: HeLa whole cell lysate; Lane 2: 293 whole cell lysate; Lane 3: K562 whole cell lysate; Lane 4: THP-1 whole cell lysate; Lane 5: U87 whole cell lysate; Lane 6: U251 whole cell lysate.



### Immunohistochemistry

Immunohistochemistry image of BMI1 recombinant monoclonal antibody, clone 1F2 diluted at 1:100 and staining in paraffin-embedded human lung cancer performed on a Leica Bond™ system.

## Specification

Product Description	Rabbit recombinant monoclonal antibody raised against human BMI1.
Antibody Species	Rabbit
Immunogen	Original antibody is raised against recombinant protein corresponding to full length human BMI1.
Reactivity	Human
Form	Liquid
Purification	Affinity-chromatography

Isotype	IgG
Recommend Usage	ELISA Immunohistochemistry (1:50-1:200) Western Blot (1:500-1:5000) The optimal working dilution should be determined by the end user.
Storage Buffer	In PBS, pH7.4 (150mM NaCl, 50% glycerol and 0.02% sodium azide)
Storage Instruction	Store at -20 °C or -80 °C. Aliquot to avoid repeated freezing and thawing.
Note	This product contains sodium azide: a POISONOUS AND HAZARDOUS SUBSTANCE which should be handled by trained staff only.

## Applications

- Western Blot

Western Blot analysis of Lane 1: Hela whole cell lysate; Lane 2: 293 whole cell lysate; Lane 3: K562 whole cell lysate; Lane 4: THP-1 whole cell lysate; Lane 5: U87 whole cell lysate; Lane 6: U251 whole cell lysate.

- Immunohistochemistry

Immunohistochemistry image of BMI1 recombinant monoclonal antibody, clone 1F2 diluted at 1:100 and staining in paraffin-embedded human lung cancer performed on a Leica Bond<sup>TM</sup> system.

- Enzyme-linked Immunoabsorbent Assay

## Gene Info — BMI1

Entrez GeneID	<a href="#">648</a>
Protein Accession#	<a href="#">P35226</a>
Gene Name	BMI1
Gene Alias	MGC12685, PCGF4, RNF51
Gene Description	BMI1 polycomb ring finger oncogene
Omim ID	<a href="#">164831</a>
Gene Ontology	<a href="#">Hyperlink</a>
Other Designations	B lymphoma Mo-MLV insertion region 1 homolog fvi-2/bmi-1 murine leukemia viral (bmi-1) oncogene homolog oncogene BMI-1 polycomb group ring finger 4