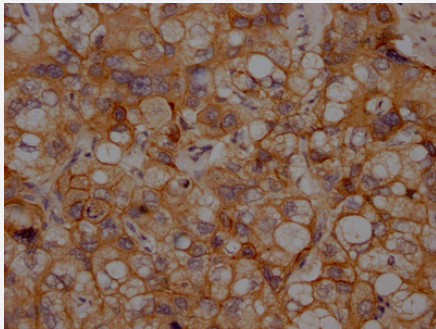


RecomAb™

CDH2 recombinant monoclonal antibody, clone 1A9

Catalog # RAB04035 Size 100 uL

Applications



Immunohistochemistry

Immunohistochemistry image of CDH2 recombinant monoclonal antibody, clone 1A9 diluted at 1:100 and staining in paraffin-embedded human liver cancer performed on a Leica Bond™ system.

Specification

Product Description	Rabbit recombinant monoclonal antibody raised against human CDH2.
Antibody Species	Rabbit
Immunogen	Original antibody is raised against recombinant protein corresponding to full length human CDH2.
Reactivity	Human
Form	Liquid
Purification	Affinity-chromatography
Isotype	IgG
Recommend Usage	ELISA Immunohistochemistry (1:50-1:200) The optimal working dilution should be determined by the end user.
Storage Buffer	In PBS, pH7.4 (150mM NaCl, 50% glycerol and 0.02% sodium azide)
Storage Instruction	Store at -20 °C or -80 °C. Aliquot to avoid repeated freezing and thawing.

Note

This product contains sodium azide: a POISONOUS AND HAZARDOUS SUBSTANCE which should be handled by trained staff only.

Applications

- Immunohistochemistry

Immunohistochemistry image of CDH2 recombinant monoclonal antibody, clone 1A9 diluted at 1:100 and staining in paraffin-embedded human liver cancer performed on a Leica BondTM system.

- Enzyme-linked Immunoabsorbent Assay

Gene Info — CDH2

Entrez GeneID [1000](#)

Protein Accession# [P19022](#)

Gene Name CDH2

Gene Alias CD325, CDHN, CDw325, NCAD

Gene Description cadherin 2, type 1, N-cadherin (neuronal)

Omim ID [114020](#)

Gene Ontology [Hyperlink](#)

Gene Summary This gene is a classical cadherin from the cadherin superfamily. The encoded protein is a calcium dependent cell-cell adhesion glycoprotein comprised of five extracellular cadherin repeats, a trans membrane region and a highly conserved cytoplasmic tail. The protein functions during gastrulation and is required for establishment of left-right asymmetry. At certain central nervous system synapses, presynaptic to postsynaptic adhesion is mediated at least in part by this gene product. [provided by RefSeq]

Other Designations N-cadherin 1|cadherin 2, N-cadherin (neuronal)|cadherin 2, type 1|calcium-dependent adhesion protein, neuronal|neural cadherin

Pathway

- [Arrhythmogenic right ventricular cardiomyopathy \(ARVC\)](#)
- [Cell adhesion molecules \(CAMs\)](#)

Disease

- [Cleft Lip](#)
- [Cleft Palate](#)
- [Esophageal Neoplasms](#)
- [Genetic Predisposition to Disease](#)
- [Head and Neck Neoplasms](#)
- [Laryngeal Neoplasms](#)
- [Mouth Neoplasms](#)
- [Pharyngeal Neoplasms](#)
- [Tobacco Use Disorder](#)
- [Tooth Abnormalities](#)