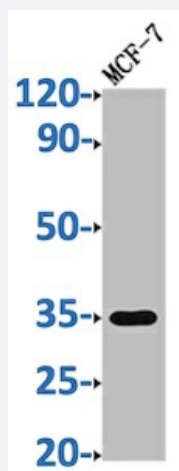


RecomAb™

EPCAM recombinant monoclonal antibody, clone 6H12

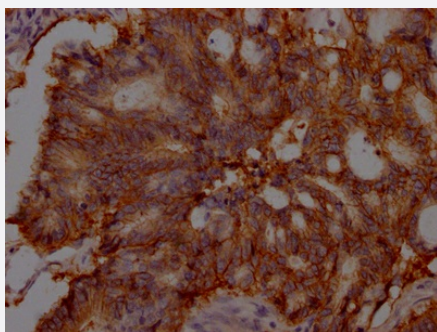
Catalog # RAB04002 Size 100 uL

Applications



Western Blot

Western Blot analysis of Lane 1: MCF-7 whole cell lysate.



Immunohistochemistry

Immunohistochemistry image of EPCAM recombinant monoclonal antibody, clone 6H12 diluted at 1:100 and staining in paraffin-embedded human colon cancer performed on a Leica Bond™ system.

Specification

Product Description	Rabbit recombinant monoclonal antibody raised against human EPCAM.
Antibody Species	Rabbit
Immunogen	Original antibody is raised against recombinant protein corresponding to full length human EPCAM.
Reactivity	Human

Form	Liquid
Purification	Affinity-chromatography
Isotype	IgG
Recommend Usage	ELISA Immunohistochemistry (1:50-1:200) Western Blot (1:500-1:5000) The optimal working dilution should be determined by the end user.
Storage Buffer	In PBS, pH7.4 (150mM NaCl, 50% glycerol and 0.02% sodium azide)
Storage Instruction	store at -20 °C or -80 °C. Aliquot to avoid repeated freezing and thawing.
Note	This product contains sodium azide: a POISONOUS AND HAZARDOUS SUBSTANCE which should be handled by trained staff only.

Applications

- Western Blot

Western Blot analysis of Lane 1: MCF-7 whole cell lysate.

- Immunohistochemistry

Immunohistochemistry image of EPCAM recombinant monoclonal antibody, clone 6H12 diluted at 1:100 and staining in paraffin-embedded human colon cancer performed on a Leica Bond™ system.

- Enzyme-linked Immunoabsorbent Assay

Gene Info — EPCAM

Entrez GeneID	4072
Protein Accession#	P16422
Gene Name	EPCAM
Gene Alias	17-1A, 323/A3, CD326, CO-17A, CO17-1A, EGP, EGP-2, EGP34, EGP40, ESA, Ep-CAM, GA7 33-2, HEA125, KS1/4, KSA, M4S1, MH99, MIC18, MK-1, MOC31, TACST-1, TACSTD1, TROP 1, hEGP-2
Gene Description	epithelial cell adhesion molecule
Omim ID	185535

Gene Ontology

[Hyperlink](#)

Gene Summary

This gene encodes a carcinoma-associated antigen and is a member of a family that includes at least two type I membrane proteins. This antigen is expressed on most normal epithelial cells and gastrointestinal carcinomas and functions as a homotypic calcium-independent cell adhesion molecule. The antigen is being used as a target for immunotherapy treatment of human carcinomas. Mutations in this gene result in congenital tufting enteropathy. [provided by RefSeq]

Other Designations

adenocarcinoma-associated antigen|carcinoma-associated antigen GA733-2|human epithelial glycoprotein-2|membrane component, chromosome 4, surface marker (35kD glycoprotein)|tumor-associated calcium signal transducer 1

Disease

- [Genetic Predisposition to Disease](#)
- [Ovarian Neoplasms](#)