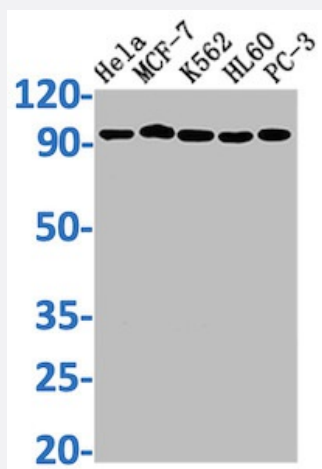


RecomAb™

TOP1 recombinant monoclonal antibody, clone 6D8

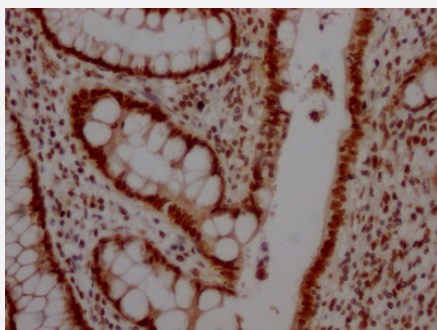
Catalog # RAB03998 Size 100 uL

Applications



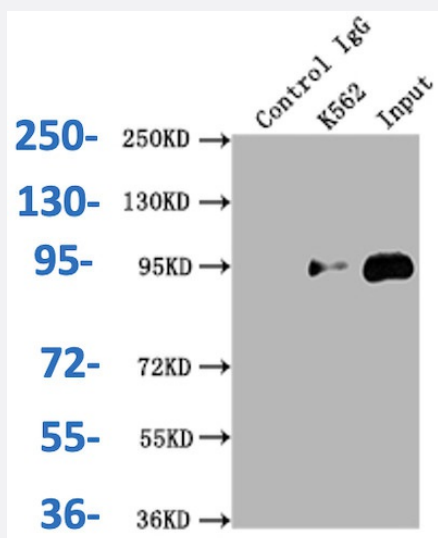
Western Blot

Western Blot analysis of Lane 1: HeLa whole cell lysate; Lane 2: MCF-7 whole cell lysate; Lane 3: K562 whole cell lysate; Lane 4: HL60 whole cell lysate; Lane 5: PC-3 whole cell lysate.



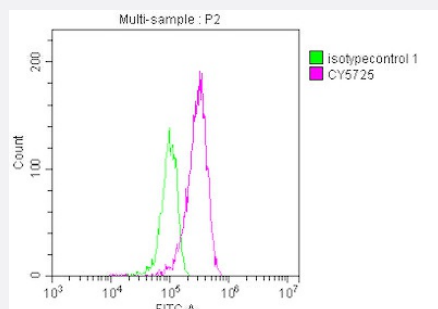
Immunohistochemistry

Immunohistochemistry image of TOP1 recombinant monoclonal antibody, clone 6D8 diluted at 1:100 and staining in paraffin-embedded human colon cancer performed on a Leica Bond™ system.



Immunoprecipitation

Immunoprecipitating TOP1 in K562 whole cell lysate.



Flow Cytometry

Overlay histogram showing HepG2 cells stained with TOP1 recombinant monoclonal antibody, clone 6D8 (red line) at 1:50.

Specification

Product Description	Rabbit recombinant monoclonal antibody raised against human TOP1.
Antibody Species	Rabbit
Immunogen	Original antibody is raised against recombinant protein corresponding to full length human TOP1.
Theoretical MW (kDa)	Calculated MW: 91 kD
Reactivity	Human
Form	Liquid
Purification	Affinity-chromatography
Isotype	IgG
Recommend Usage	ELISA Flow Cytometry (1:20-1:200) Immunohistochemistry (1:50-1:200) Immunoprecipitation(1:200-1:1000) Western Blot (1:500-1:5000) The optimal working dilution should be determined by the end user.
Storage Buffer	In PBS, pH7.4 (150mM NaCl, 50% glycerol and 0.02% sodium azide)
Storage Instruction	store at -20 °C or -80 °C. Aliquot to avoid repeated freezing and thawing.
Note	This product contains sodium azide: a POISONOUS AND HAZARDOUS SUBSTANCE which should be handled by trained staff only.

Applications

- Western Blot

Western Blot analysis of Lane 1: Hela whole cell lysate; Lane 2: MCF-7 whole cell lysate; Lane 3: K562 whole cell lysate; Lane 4: HL60 whole cell lysate; Lane 5: PC-3 whole cell lysate.

- Immunohistochemistry

Immunohistochemistry image of TOP1 recombinant monoclonal antibody, clone 6D8 diluted at 1:100 and staining in paraffin-embedded human colon cancer performed on a Leica Bond™ system.

- Immunoprecipitation

Immunoprecipitating TOP1 in K562 whole cell lysate.

- Enzyme-linked Immunoabsorbent Assay

- Flow Cytometry

Overlay histogram showing HepG2 cells stained with TOP1 recombinant monoclonal antibody, clone 6D8 (red line) at 1:50.

Gene Info — TOP1

Entrez GeneID [7150](#)

Protein Accession# [P11387](#)

Gene Name TOP1

Gene Alias TOPI

Gene Description topoisomerase (DNA) I

Omim ID [126420](#)

Gene Ontology [Hyperlink](#)

Gene Summary This gene encodes a DNA topoisomerase, an enzyme that controls and alters the topologic state of DNA during transcription. This enzyme catalyzes the transient breaking and rejoining of a single strand of DNA which allows the strands to pass through one another, thus altering the topology of DNA. This gene is localized to chromosome 20 and has pseudogenes which reside on chromosomes 1 and 22. [provided by RefSeq]

Other Designations DNA topoisomerase I[OTTHUMP00000031713]type I DNA topoisomerase

Disease

- [Neoplasms](#)

- [Neutropenia](#)