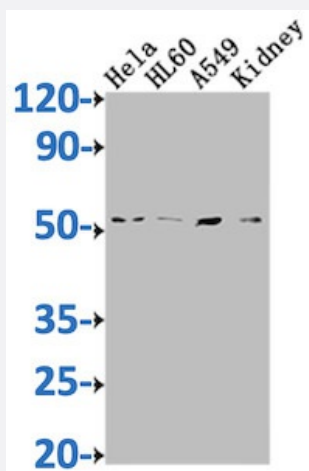


RecomAb™

ILK recombinant monoclonal antibody, clone 6A5

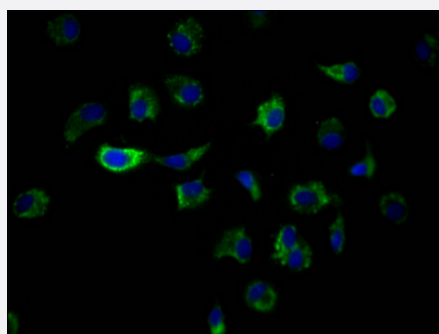
Catalog # RAB03995 Size 100 uL

Applications



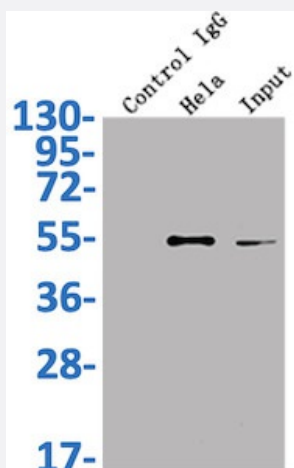
Western Blot

Western Blot analysis of Lane 1: HeLa whole cell lysate; Lane 2: HL60 whole cell lysate; Lane 3: A549 whole cell lysate; Lane 4: Mouse kidney tissue.



Immunofluorescence

Immunofluorescence staining of MCF7 Cells with ILK recombinant monoclonal antibody, clone 6A5 at 1:50, counter-stained with DAPI.



Immunoprecipitation

Immunoprecipitating MCF7 in HeLa whole cell lysate.

Specification

Product Description	Rabbit recombinant monoclonal antibody raised against human and mouse ILK.
Antibody Species	Rabbit
Immunogen	Original antibody is raised against recombinant protein corresponding to full length human ILK.
Theoretical MW (kDa)	Calculated MW: 52, 4
Reactivity	Human, Mouse
Form	Liquid
Purification	Affinity-chromatography
Isotype	IgG
Recommend Usage	ELISA Immunofluorescence(1:20-1:200) Immunoprecipitation(1:200-1:1000) Western Blot (1:500-1:5000) The optimal working dilution should be determined by the end user.
Storage Buffer	In PBS, pH7.4 (150mM NaCl, 50% glycerol and 0.02% sodium azide)
Storage Instruction	store at -20 °C or -80 °C. Aliquot to avoid repeated freezing and thawing.
Note	This product contains sodium azide: a POISONOUS AND HAZARDOUS SUBSTANCE which should be handled by trained staff only.

Applications

- Western Blot

Western Blot analysis of Lane 1: Hela whole cell lysate; Lane 2: HL60 whole cell lysate; Lane 3: A549 whole cell lysate; Lane 4: Mouse kidney tissue.

- Immunofluorescence

Immunofluorescence staining of MCF7 Cells with ILK recombinant monoclonal antibody, clone 6A5 at 1:50, counter-stained with DAPI.

- Immunoprecipitation

Immunoprecipitating MCF7 in Hela whole cell lysate.

- Enzyme-linked Immunoabsorbent Assay

Gene Info — ILK

Entrez GeneID	3611
Protein Accession#	Q13418
Gene Name	ILK
Gene Alias	DKFZp686F1765, P59
Gene Description	integrin-linked kinase
Omim ID	602366
Gene Ontology	Hyperlink
Gene Summary	<p>Transduction of extracellular matrix signals through integrins influences intracellular and extracellular functions, and appears to require interaction of integrin cytoplasmic domains with cellular proteins. Integrin-linked kinase (ILK), interacts with the cytoplasmic domain of beta-1 integrin. This gene encodes a serine/threonine protein kinase with 4 ankyrin-like repeats, which associates with the cytoplasmic domain of beta integrins and acts as a proximal receptor kinase regulating integrin-mediated signal transduction. Multiple alternatively spliced transcript variants encoding the same protein have been found for this gene. [provided by RefSeq]</p>
Other Designations	-

Pathway

- [Endometrial cancer](#)
- [Focal adhesion](#)
- [PPAR signaling pathway](#)