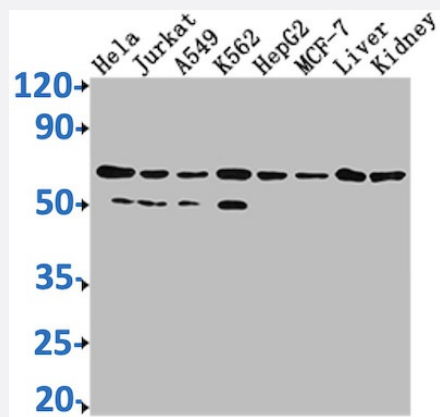


RecomAb™

AIFM1 recombinant monoclonal antibody, clone 4B2

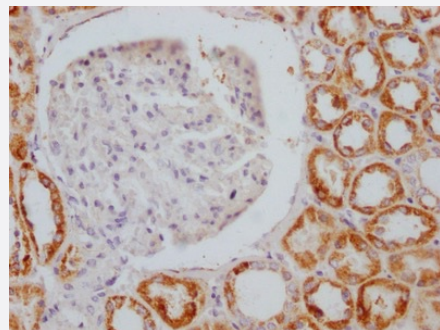
Catalog # RAB03980 Size 100 uL

Applications



Western Blot

Western Blot analysis of (1) HeLa whole cell lysate, (2) Jurkat whole cell lysate, (3) A549 whole cell lysate, (4) HepG2 whole cell lysate, (5) MCF-7 whole cell lysate, (6) Rat liver tissue, (7) Rat kidney tissue.



Immunohistochemistry

Immunohistochemistry staining in paraffin-embedded human kidney tissue.

Specification

Product Description	Rabbit recombinant monoclonal antibody raised against human AIFM1.
Antibody Species	Rabbit
Immunogen	Original antibody is raised against recombinant protein corresponding to full length human AIFM1.
Reactivity	Human
Form	Liquid

Purification	Affinity-chromatography
Isotype	IgG
Recommend Usage	ELISA Immunohistochemistry (1:50-1:200) Western Blot (1:500-1:5000) The optimal working dilution should be determined by the end user.
Storage Buffer	In PBS, pH7.4 (150mM NaCl, 50% glycerol and 0.02% sodium azide)
Storage Instruction	store at -20 °C or -80 °C. Aliquot to avoid repeated freezing and thawing.
Note	This product contains sodium azide: a POISONOUS AND HAZARDOUS SUBSTANCE which should be handled by trained staff only.

Applications

- Western Blot

Western Blot analysis of (1) Hela whole cell lysate, (2) Jurkat whole cell lysate, (3) A549 whole cell lysate, (4) HepG2 whole cell lysate, (5) MCF-7 whole cell lysate, (6) Rat liver tissue, (7) Rat kidney tissue.

- Immunohistochemistry

Immunohistochemistry staining in paraffin-embedded human kidney tissue.

- Enzyme-linked Immunoabsorbent Assay

Gene Info — AIFM1

Entrez GeneID	9131
Protein Accession#	O95831
Gene Name	AIFM1
Gene Alias	AIF, MGC111425, PDCD8
Gene Description	apoptosis-inducing factor, mitochondrion-associated, 1
Omim ID	300169
Gene Ontology	Hyperlink

Gene Summary

This gene encodes a flavoprotein essential for nuclear disassembly in apoptotic cells that is found in the mitochondrial intermembrane space in healthy cells. Induction of apoptosis results in the translocation of this protein to the nucleus where it effects chromosome condensation and fragmentation. In addition, this gene product induces mitochondria to release the apoptogenic proteins cytochrome c and caspase-9. Several alternative transcripts encoding different isoforms have been identified for this gene. [provided by RefSeq]

Other Designations

OTTHUMP00000024007|OTTHUMP00000024008|OTTHUMP00000024009|programmed cell death 8|programmed cell death 8 (apoptosis-inducing factor)|striatal apoptosis-inducing factor

Pathway

- [Apoptosis](#)

Disease

- [Cardiovascular Diseases](#)
- [Diabetes Mellitus](#)
- [Edema](#)
- [Genetic Predisposition to Disease](#)
- [Prostatic Neoplasms](#)